

90  
MICROFILMED

# PLAT AND RECORD

Of a Survey on Section 6 T 3 R 13 E. of the 4 P. M. in Harmony Township

Rock County, Wisconsin, made February the 4<sup>th</sup> 1859

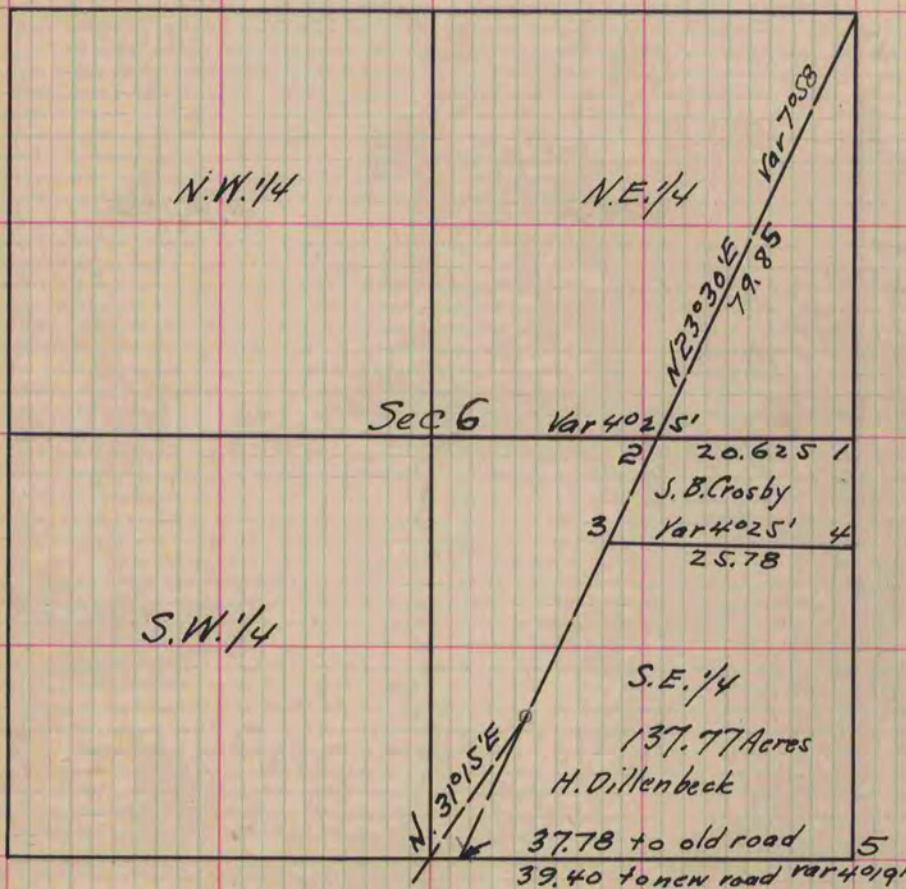
I hereby certify that the following is a correct record of said survey as made by me.

COUNTY BUILDING  
CITY OF JANESVILLE

(Signed) Edward Ruger  
R.H.B. County Surveyor.

Made for J. B. Crosby and H. Dillenbeck

Distances given in chains  
Variations marked on the lines



- Figs 1, 4+5 the same as those in Sec 5 over leaf
- " 2 Burr Oak 105 21° 05' E. 43
- " " " " 13 N 57° 35' E. 143
- " 3 dry Oak stump 1 foot high with 3 hacks in back
- " " " " N 8° 40' W 133 3/4
- " " Burr Oak 8 364° 40' E 143

Copied from P. 99 Vol. One Original County Surveyors Record