

PLAT AND RECORD

MICROFILMED

Of a Survey on Section 1 T 2 R 12 E. of the 4 P. M. in Rock Township
Rock County, Wisconsin, made January the 18th 1859

I hereby certify that the following is a correct record of said survey as made by me.

COUNTY BUILDING
CITY OF JANESVILLE

(Signed) Edward Ruger
R.H.B. County Surveyor.

For William Atkinson

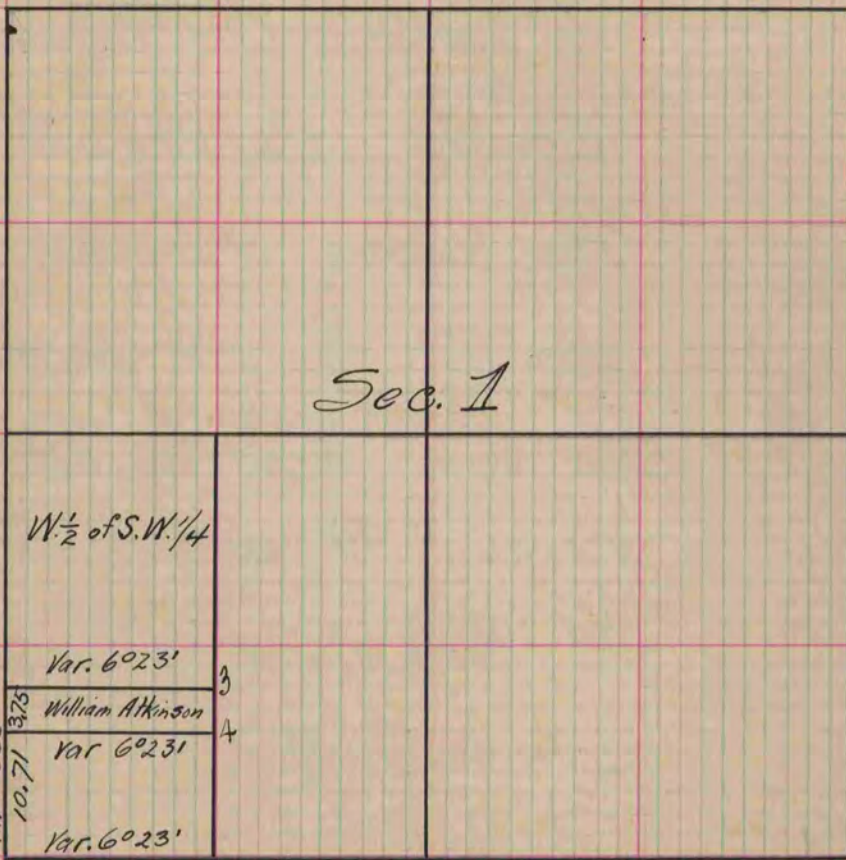


Fig. 1. Burr Oak 6 S 14°28' W. 99 1/2 links
 " " " " S. 75°32' W. 51 "
 " 2 Black Oak N 88° E 50 "
 " " " " N 58°30' E 59 1/2 links
 Var. on Bearing trees 7°30'

Copied from Page 86 Vol. One Original County Surveyors Record