

PLAT AND RECORD

COUNTY BUILDING
CITY OF JANESVILLE

Of a Survey on Section **35, 36** T **2** R **12** E. of the 4 P. M. in **ROCK** Township
Rock County, Wisconsin, made **SEPTEMBER 27** 19**79**

I hereby certify that the following is a correct record of said survey as made by me.



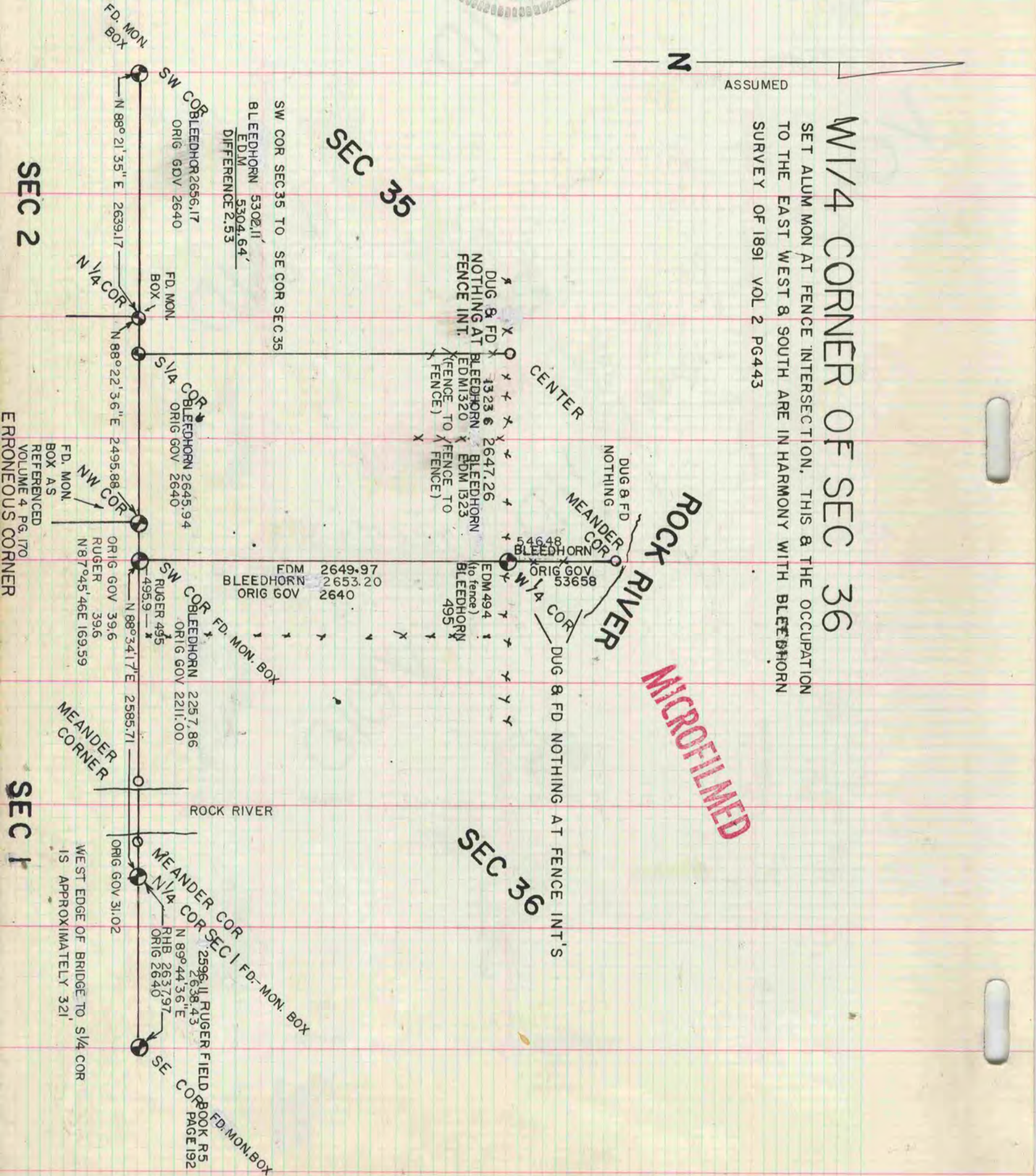
County Surveyor.



ASSUMED

W 1/4 CORNER OF SEC 36
SET ALUM MON AT FENCE INTERSECTION, THIS & THE OCCUPATION
TO THE EAST WEST & SOUTH ARE IN HARMONY WITH BLEEDHORN
SURVEY OF 1891 VOL 2 PG 443

MICROFILMED



SEC 2

SEC 35

SEC 36

SEC 1

ERRONEOUS CORNER
VOLUME 4 PG. 170
REFERENCED
BOX AS
FD. MON.