

PLAT AND RECORD

VOL. 5

65

V-5

COUNTY BUILDING
CITY OF JANESVILLE

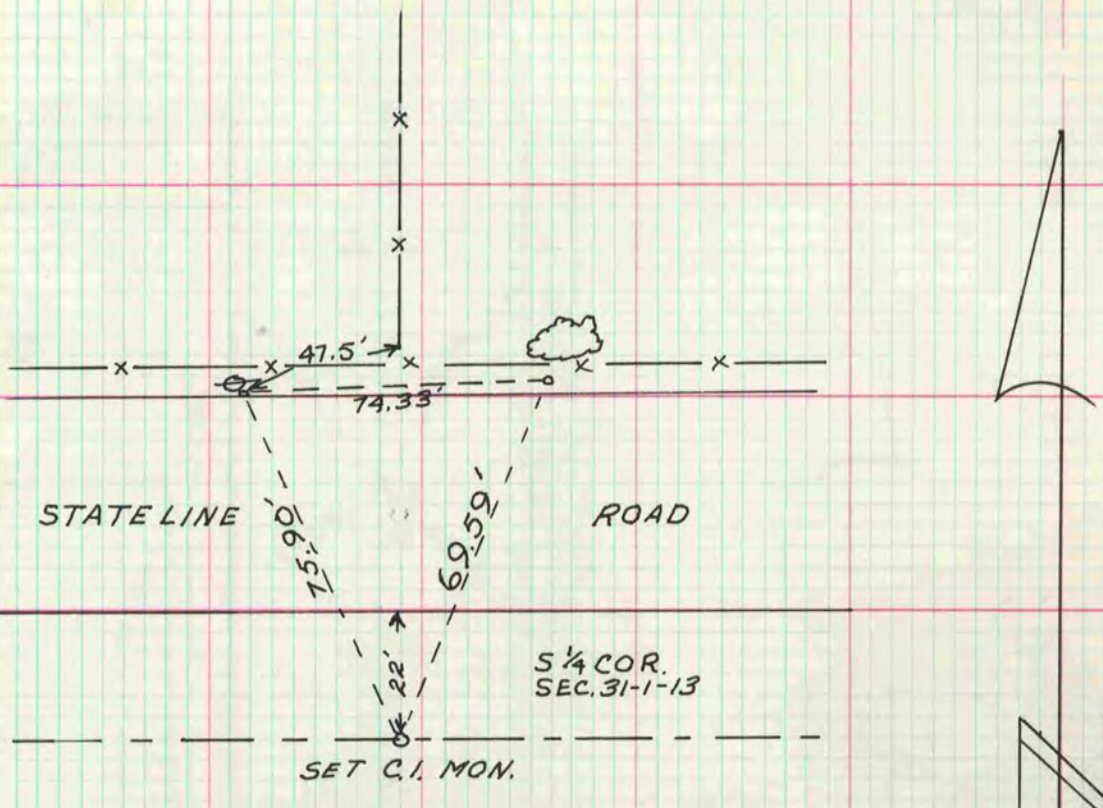
Of a Survey on Section 24-31 T. 1 R. 13 E. of the 4 P. M. in TURTLE Township

Rock County, Wisconsin, made SEPT. the 18TH 1974

I hereby certify that the following is a correct record of said survey as made by me.

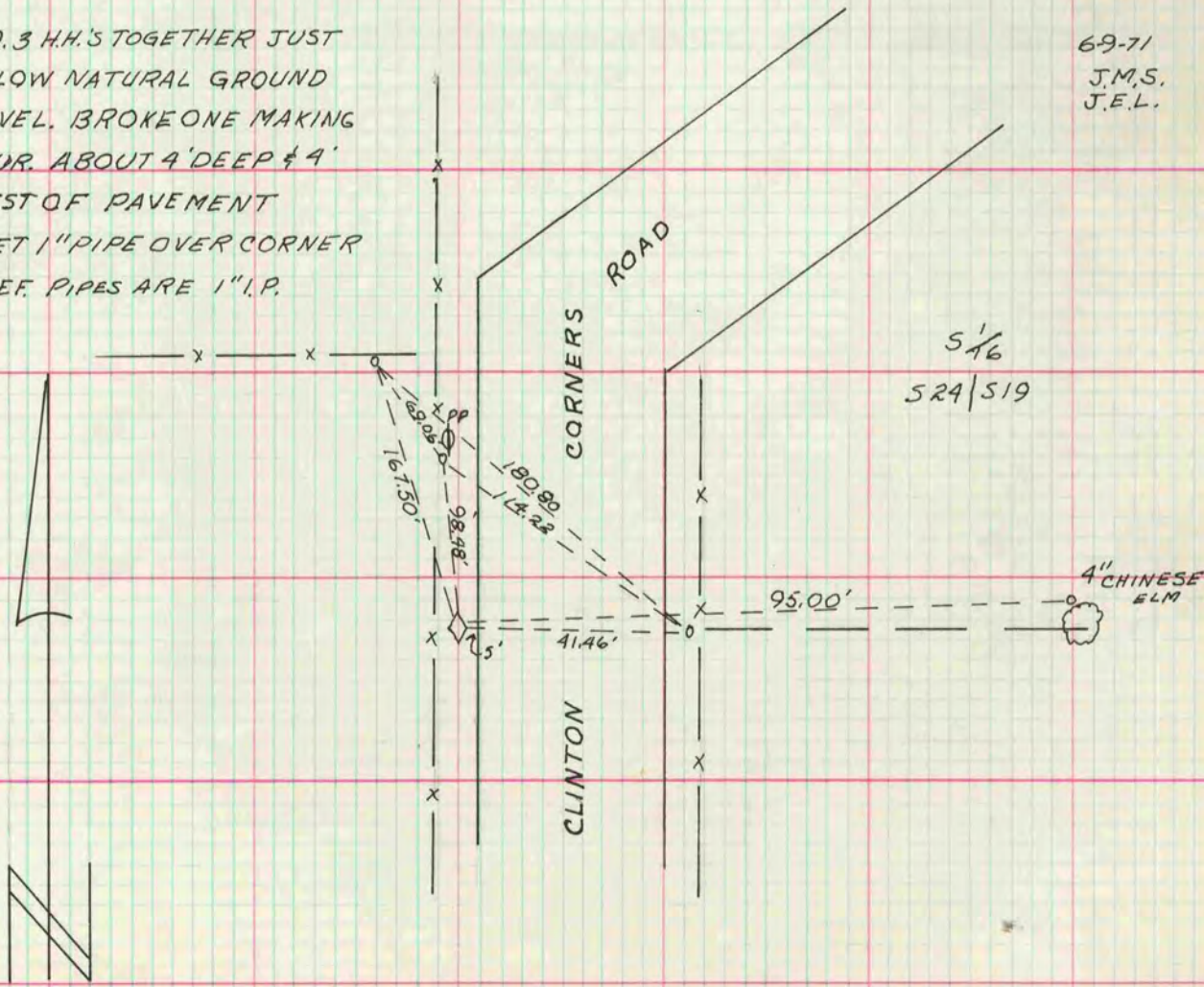
MICROFILMED

County Surveyor. *JFS*



FD. 3 H.H.'S TOGETHER JUST BELOW NATURAL GROUND LEVEL. BROKE ONE MAKING FOUR. ABOUT 4' DEEP & 4' WEST OF PAVEMENT SET 1" PIPE OVER CORNER REF. PIPES ARE 1" I.P.

69-71
J.M.S.
J.E.L.



5/16
524/519

4" CHINESE ELM