

COURTS BUILDING  
CITY OF JANESVILLE

# PLAT AND RECORD

515

30 4 13

MILTON

VOL. 5

Of a Survey on Section 25, T. 4 R. 12 E. of the 4 P. M. in Township

30 DEC

8 1969

Rock County, Wisconsin, made the

I hereby certify that the following is a correct record of said survey as made by me.

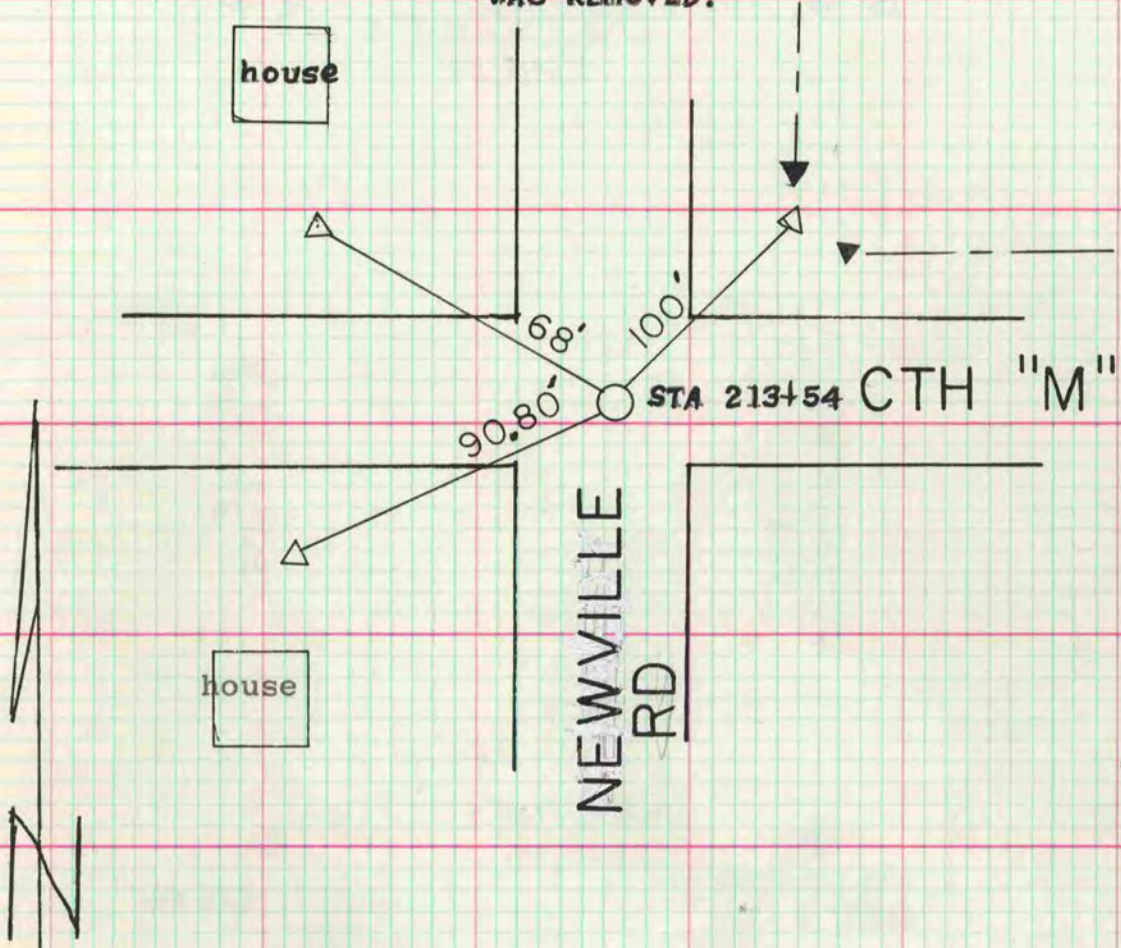
COUNTY BUILDING  
CITY OF JANESVILLE

County Surveyor.

THE GEP. D. BARNARD COMPANY, ST. LOUIS

## NE COR SEC 25

SPIKE (ORIGINAL) WAS DESTROYED. PAVEMENT WAS REMOVED.

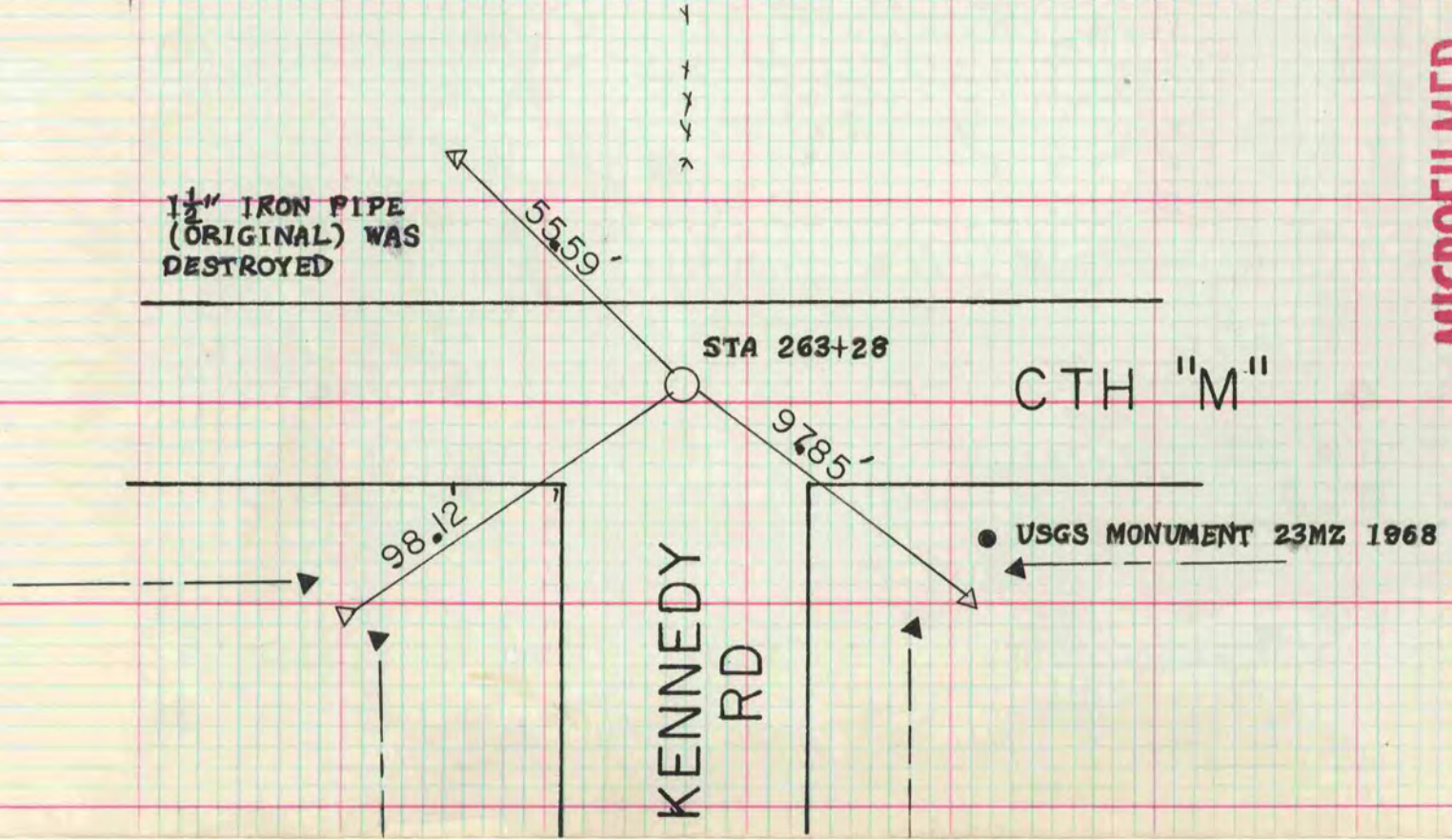


THESE CORNER TIES WERE FOUND IN THE COUNTY CLERK'S VAULT. WORK DONE BY GILBERT BECKER, PROJECT ENGINEER, ON DEC 8 1969 PROJECT NUMBER S0453-1-70, 71

▼ R/W post  
▽ REF MON. ARE BRASS DISKS

## NE COR SEC 30 MILTON

1 1/2" IRON PIPE (ORIGINAL) WAS DESTROYED



MICROFILMED