

V-2 **MICROFILMED** PLAT AND RECORD

Of a Survey on Section 22 T 3 R 14 E. of the 4 P. M. in Johnstown Township

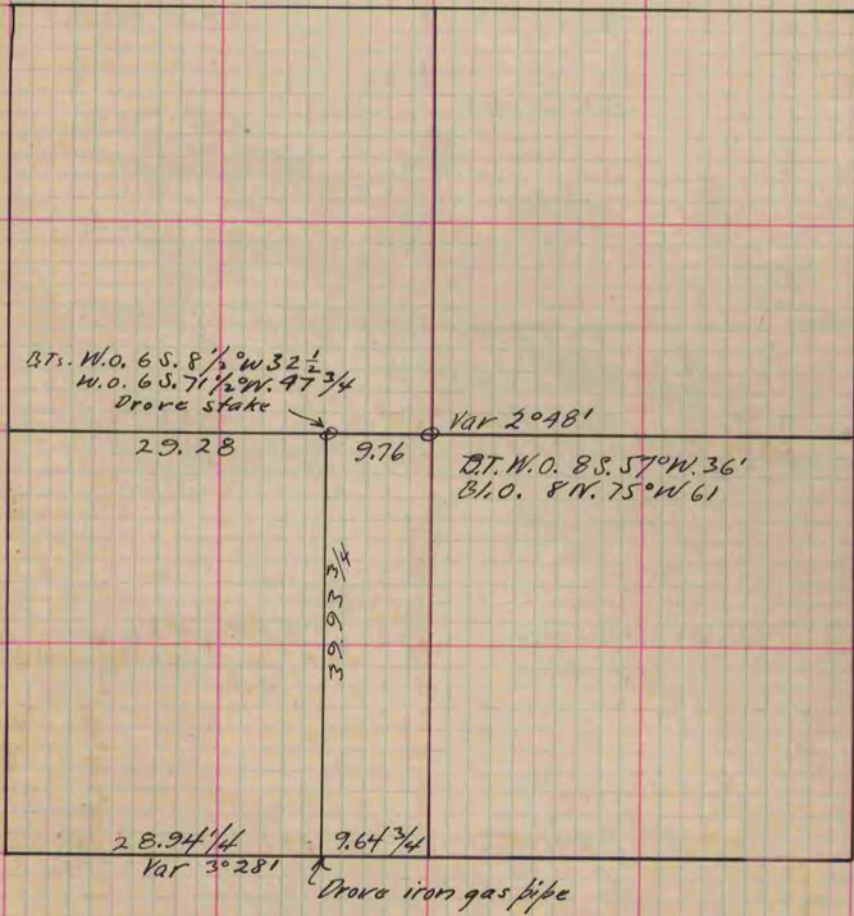
Rock County, Wisconsin, made May the 6 1984

I hereby certify that the following is a correct record of said survey as made by me.

COUNTY BUILDING
CITY OF JANESVILLE

(Signed) Edward Roger
R. H. B. County Surveyor.

See page 13 (same book)



Copied from P. 312 Vol. 2. County Surveyors Record.