

MICROFILMED PLAT AND RECORD

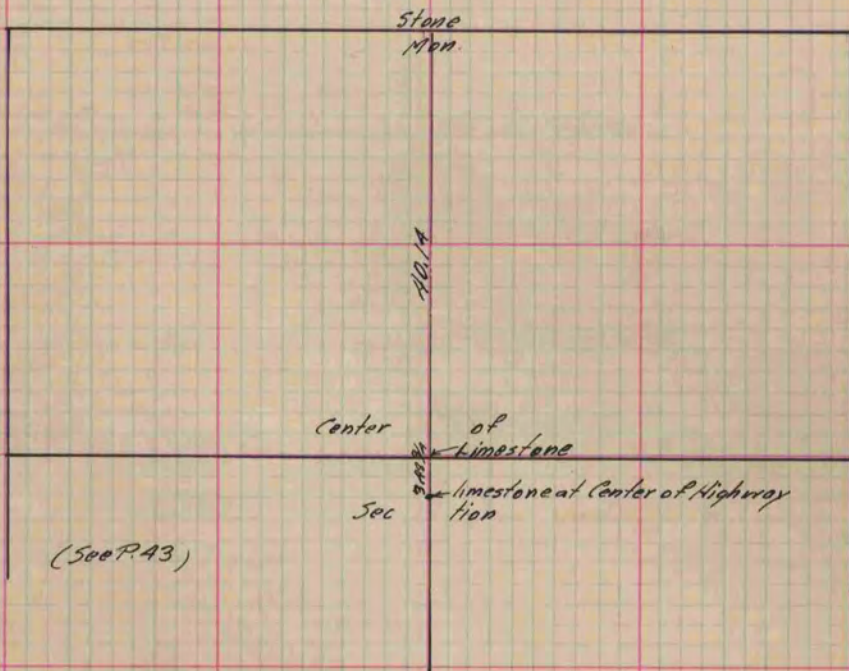
Of a Survey on Section 3 T 2 R 13 E. of the 4 P. M. in La Prairie Township
Rock County, Wisconsin, made June the 25th 1883

I hereby certify that the following is a correct record of said survey as made by me.

COUNTY BUILDING
CITY OF JANESVILLE

(Signed) Edward Ruger.
RHB

County Surveyor.



Copied from P. 370 Vol. 2 County Surveyor's Record.