

PLAT AND RECORD

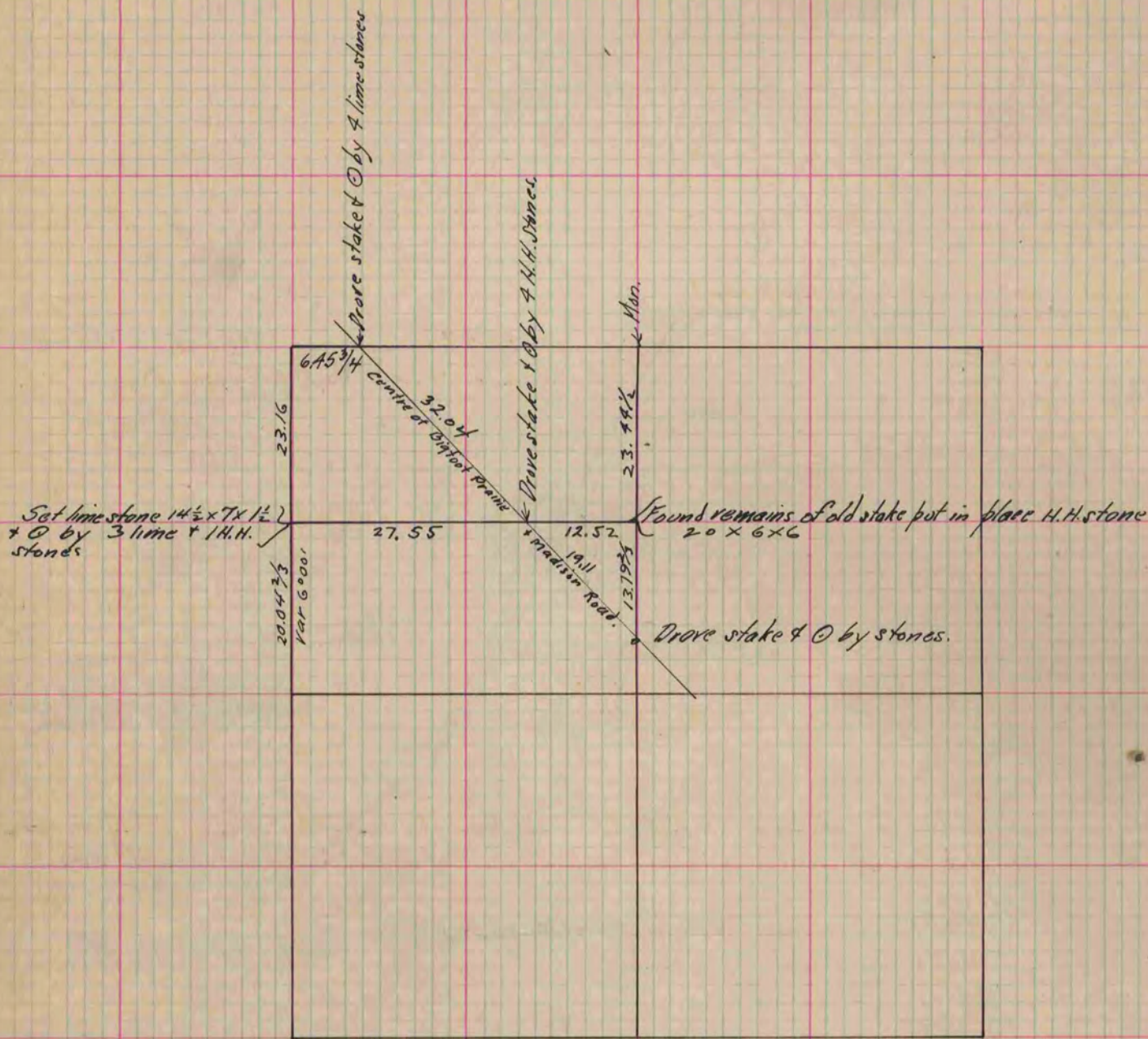
Of a Survey on Section 1 T 3 R 13 E. of the 4 P. M. in Harmony Township

Rock County, Wisconsin, made July the 21 1884

I hereby certify that the following is a correct record of said survey as made by me.

COUNTY BUILDING
CITY OF JANESVILLE

(Signed) Edward Ruger
R.H.B. County Surveyor.



Copied from P. 309 Vol. 2. County Surveyors Record.