

MICROFILMED

PLAT AND RECORD

339

V-2

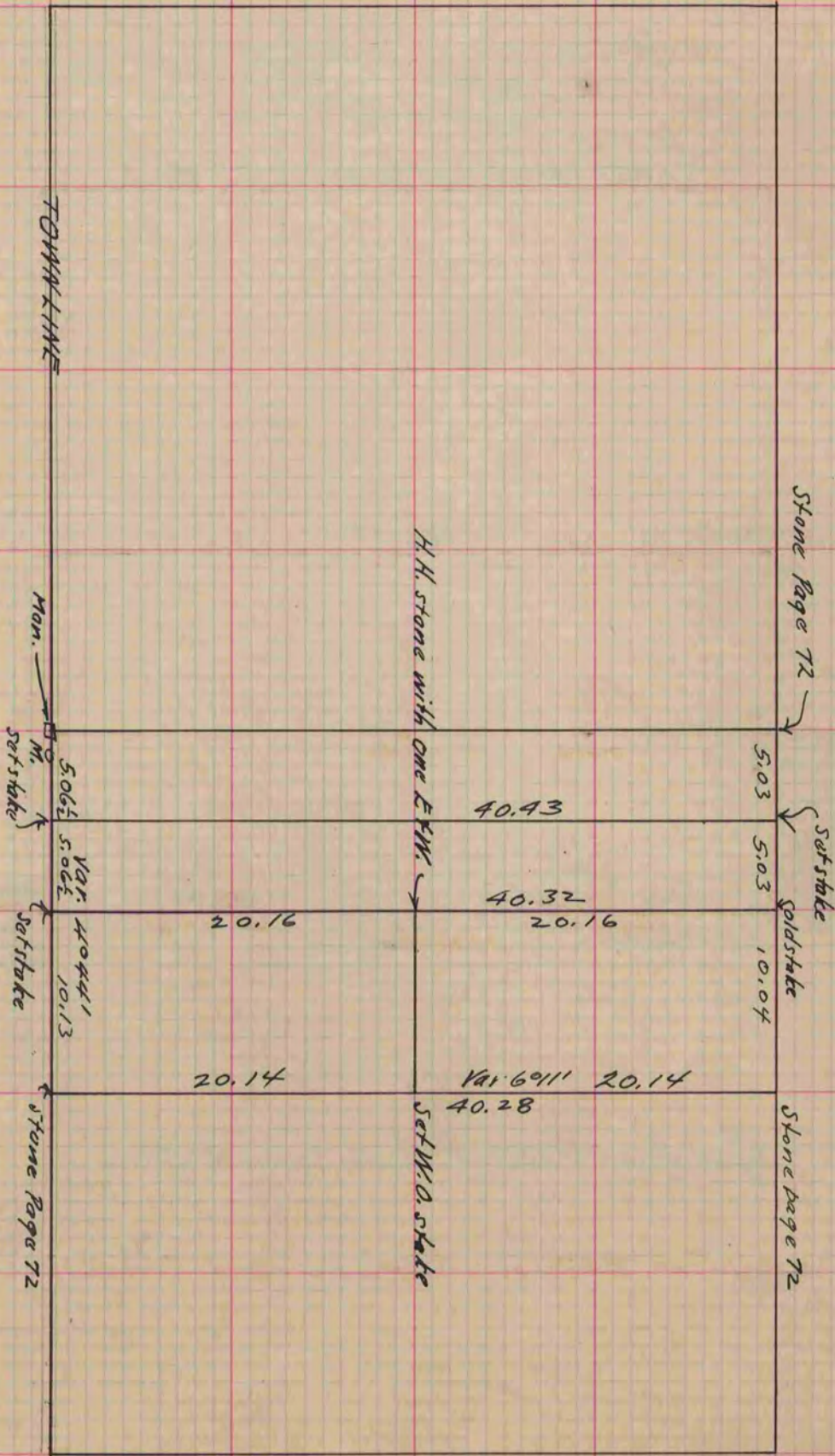
COUNTY BUILDING
CITY OF JANESVILLE

Of a Survey on Section 34 T 2 R 11 E. of the 4 P. M. in Plymouth Township

Rock County, Wisconsin, made December the 12 1881

I hereby certify that the following is a correct record of said survey as made by me.

(Signed) John A. Holmes
R. H. B. County Surveyor.



N.
PLYMOUTH
S. 1/2 of Sec 34

Copied from P. 277 Vol. 2. County Surveyors Record.