

MICROFILMED PLAT AND RECORD

333
V-2

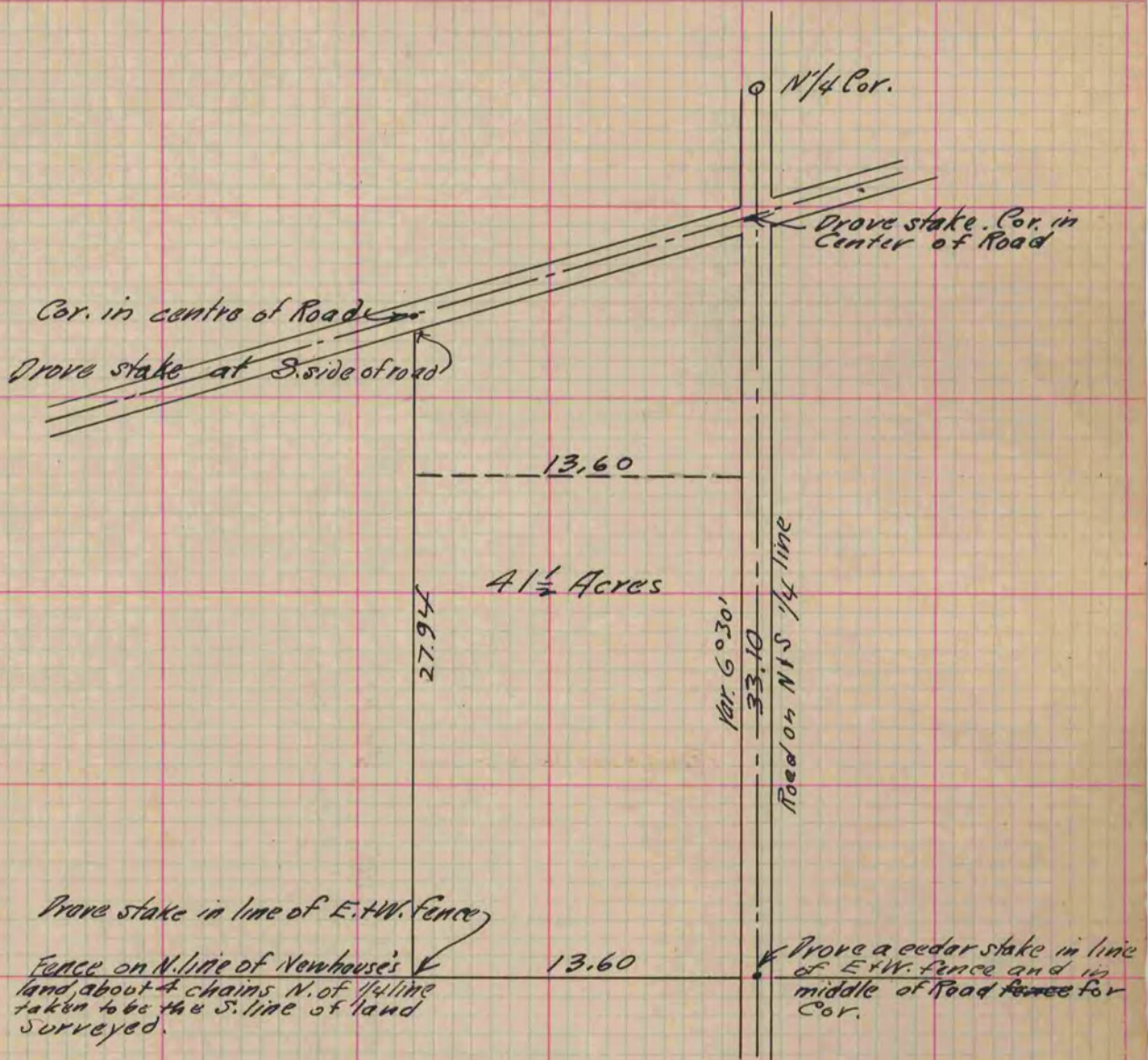
COUNTY BUILDING
CITY OF JANESVILLE

Of a Survey on Section 20 T 1 R 14 E. of the 4 P. M. in Clinton Township

Rock County, Wisconsin, made September the 19th 1881

I hereby certify that the following is a correct record of said survey as made by me.

(Signed) R. K. Lee
R. H. B. County Surveyor.



Copied from P. 272 Vol. 2. County Surveyor's Record.