

PLAT AND RECORD

331
V-2

MICROFILMED

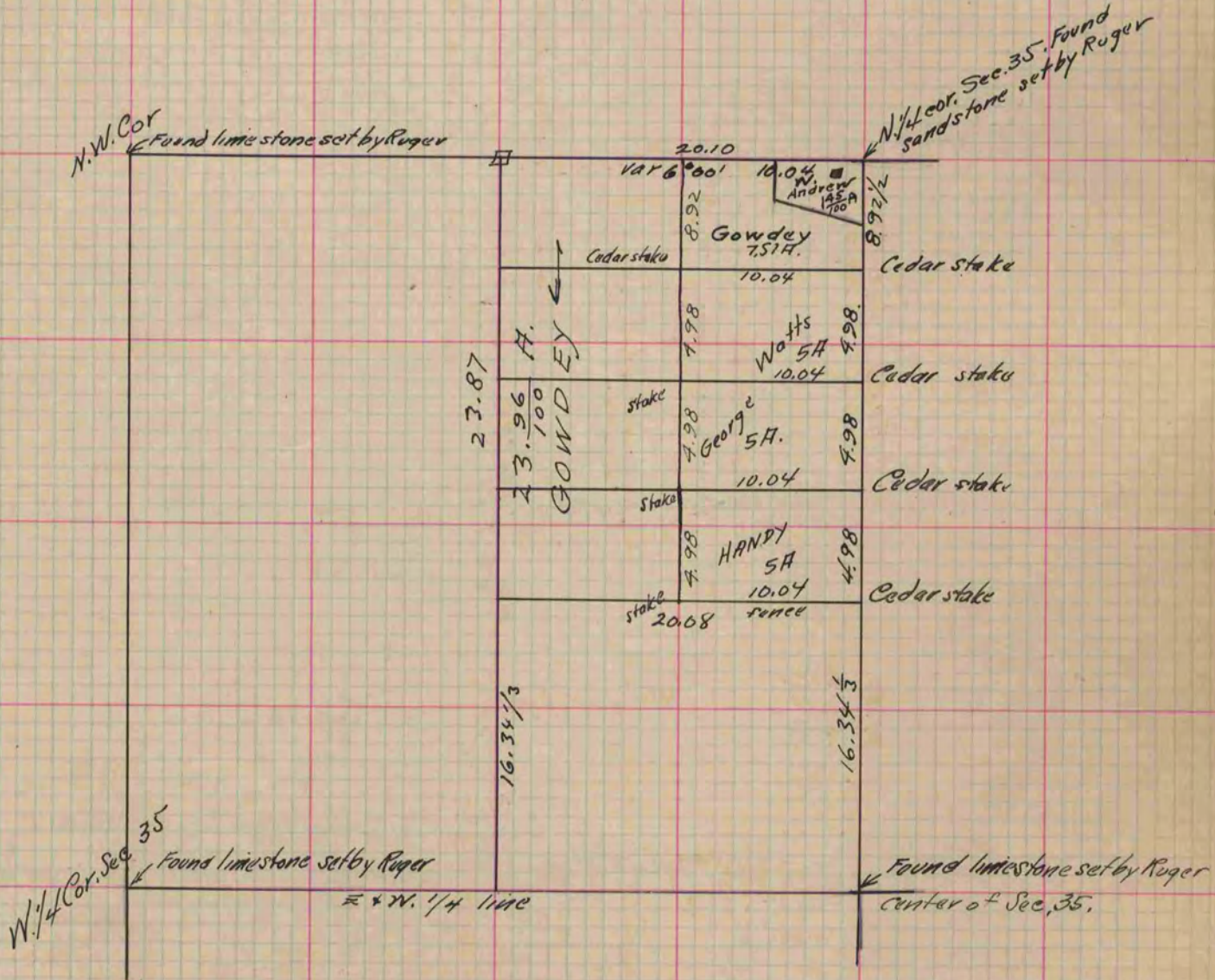
Of a Survey on Section 35 T 3 R 12 E. of the 4 P. M. in Janesville Township

Rock County, Wisconsin, made September the 12th & 21st 1881

I hereby certify that the following is a correct record of said survey as made by me.

COUNTY BUILDING
CITY OF JANESVILLE

(Signed) R. K. Lee
R.H.B. County Surveyor.



Copied from T. 271 Vol. 2. County Surveyors Record.