

PLAT AND RECORD

308
V-2

MICROFILMED

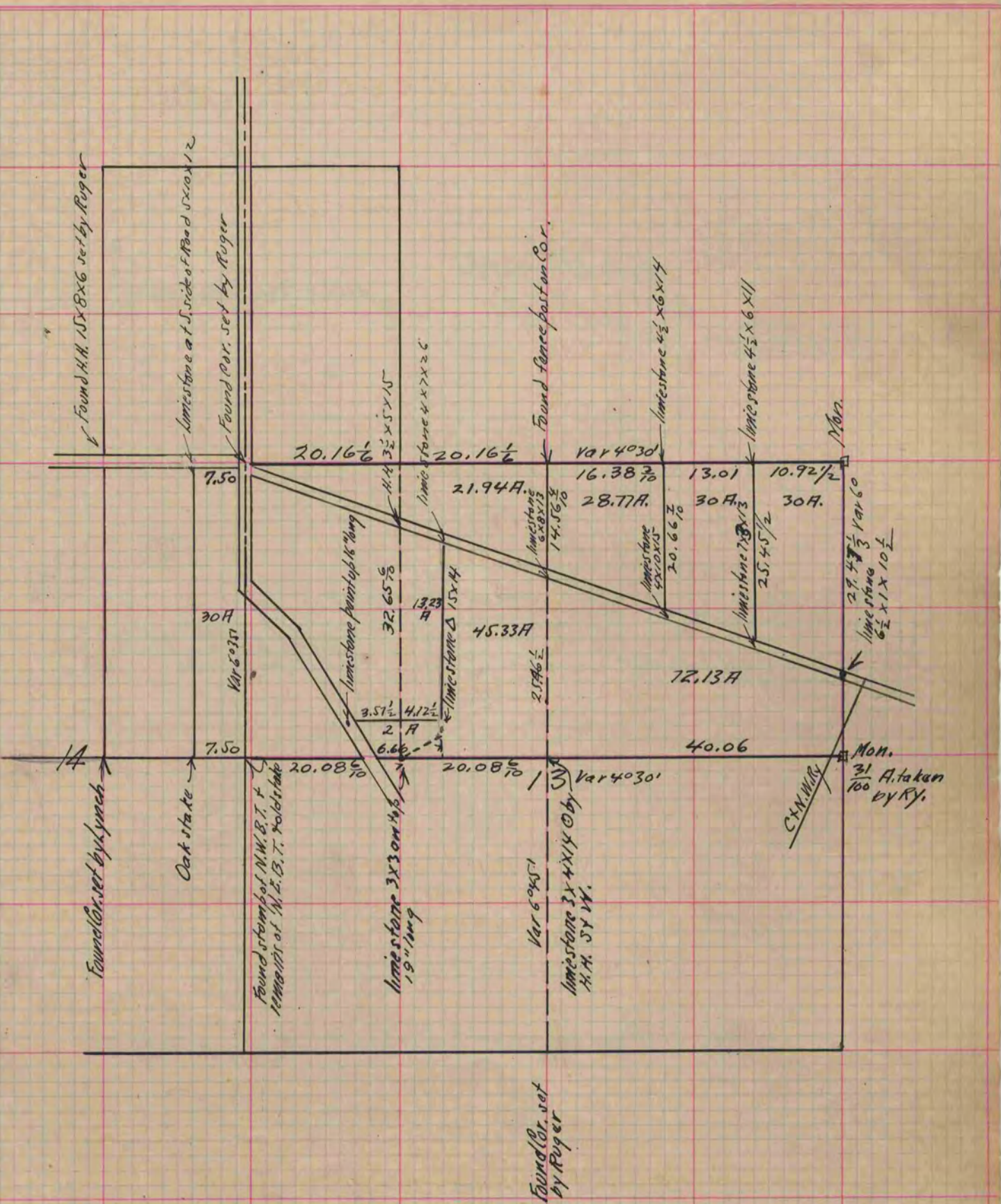
COUNTY BUILDING
CITY OF JANESVILLE

Of a Survey on Sections 13+14 T 3 R 12 E. of the 4 P. M. in Janesville Township

Rock County, Wisconsin, made June the 3, 4 & 5 1880

I hereby certify that the following is a correct record of said survey as made by me.

(Signed) R. K. Lee Dep.
RMB. County Surveyor.



Copied from P. 254 V. 2. County Surveyors Record.