

MICROFILMED

PLAT AND RECORD

378

V-2

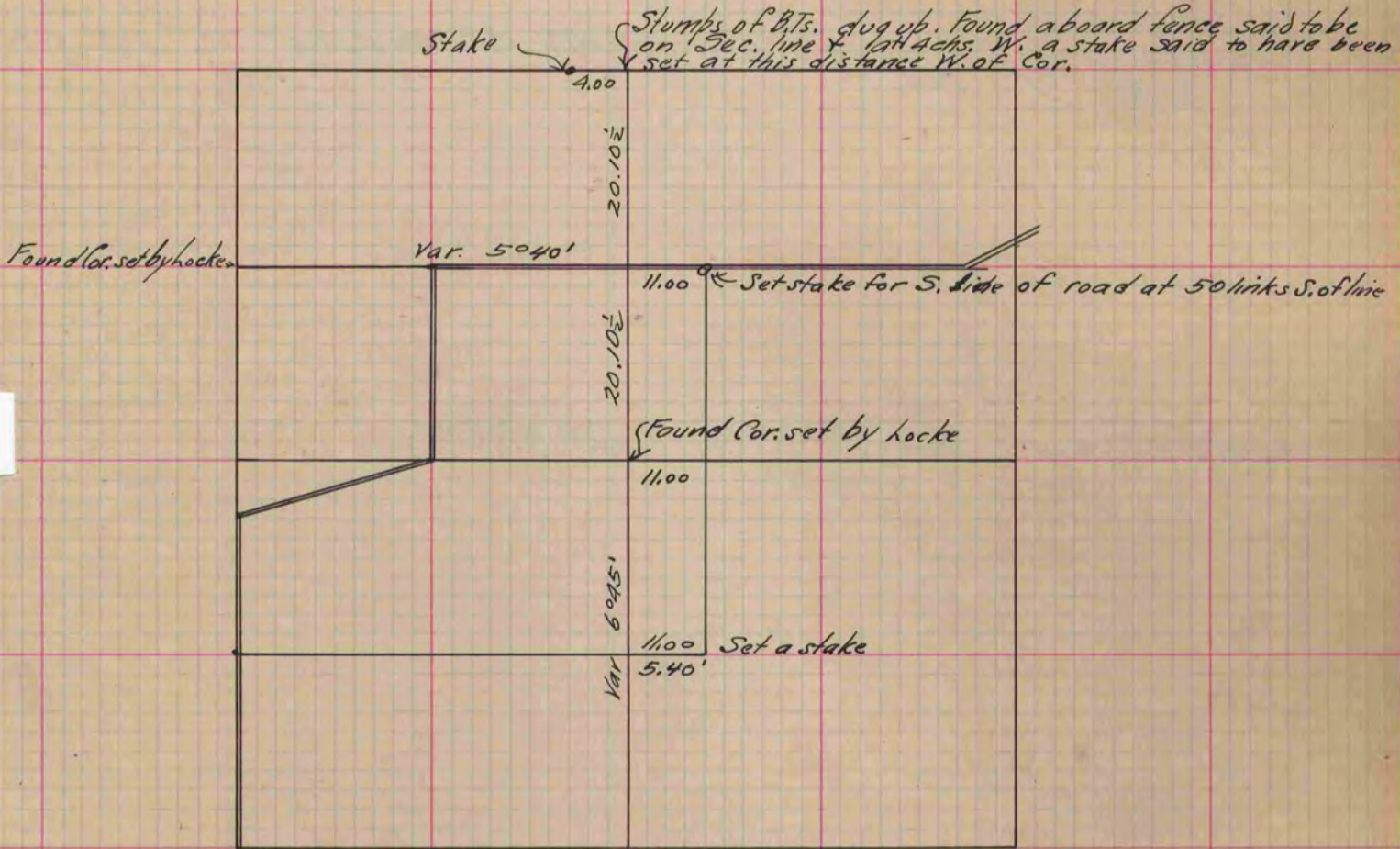
COUNTY BUILDING
CITY OF JANESVILLE

Of a Survey on Section 19 T 1 R 14 E. of the 4 P. M. in Clinton Township

Rock County, Wisconsin, made June the 14th 1882

I hereby certify that the following is a correct record of said survey as made by me.

(Signed) R. K. Lee
Dep. County Surveyor.



Copied from P. 300 Vol. 2 County Surveyors Record.