

**MICROFILMED** PLAT AND RECORD

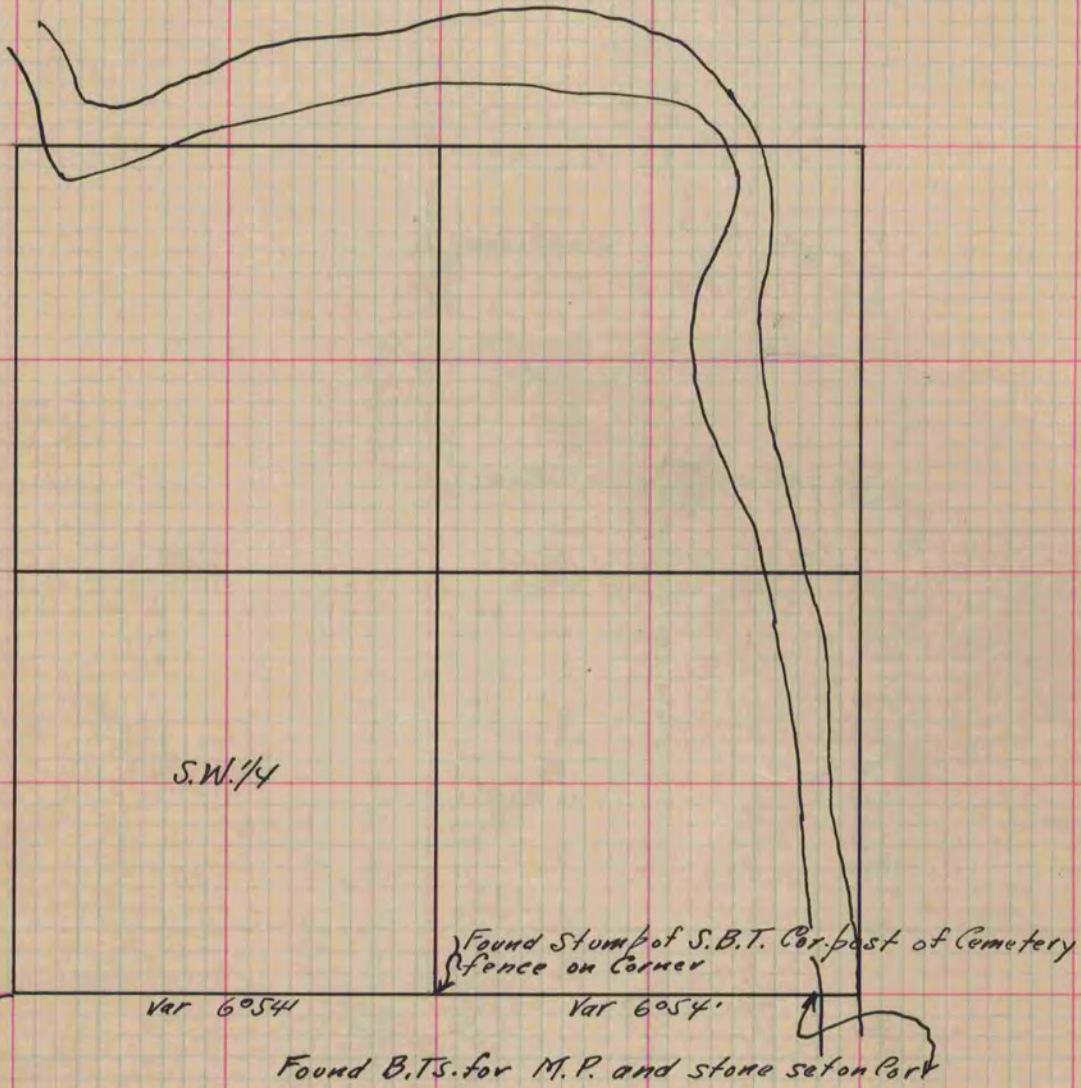
Of a Survey on Section 23 T 3 R 12 E. of the 4 P. M. in Janesville Township  
Rock County, Wisconsin, made February the 25 1868

I hereby certify that the following is a correct record of said survey as made by me.

COUNTY BUILDING  
CITY OF JANESVILLE

(Signed) S.D. Locke  
R.H.B.

County Surveyor.



Copied from Page 261 Vol. 1, Original County Surveyors Record