

PLAT AND RECORD

Of a Survey on Section ¹⁹27 T 4 R 11 E. of the 4 P. M. in **NEWARK PORTER** Township
 Rock County, Wisconsin, made **JUNE 26** 1979

I hereby certify that the following is a correct record of said survey as made by me.

**COUNTY BUILDING
CITY OF JANESVILLE**

Donald Barnes
DONALD A. County Surveyor,
S-1216



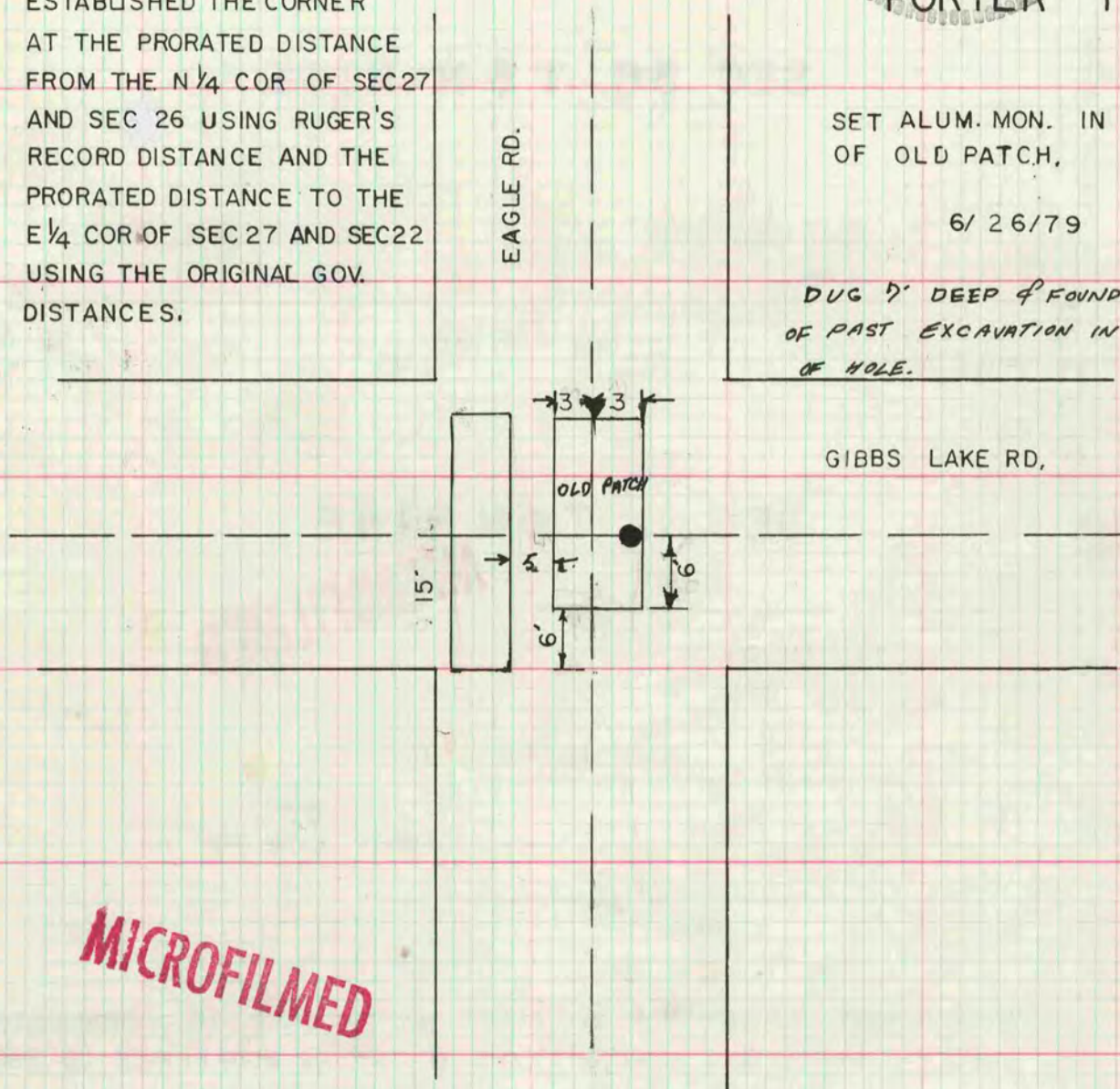
NE COR SEC 27 T 4N R 11E PORTER TWP.

ESTABLISHED THE CORNER AT THE PRORATED DISTANCE FROM THE N 1/4 COR OF SEC 27 AND SEC 26 USING RUGER'S RECORD DISTANCE AND THE PRORATED DISTANCE TO THE E 1/4 COR OF SEC 27 AND SEC 22 USING THE ORIGINAL GOV. DISTANCES.

SET ALUM. MON. IN EAST EDGE OF OLD PATCH,

6/26/79

DUG 7' DEEP & FOUND REMAINS OF PAST EXCAVATION IN EAST SIDE OF HOLE.



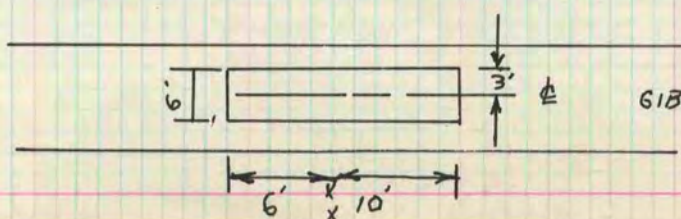
MICROFILMED

SW COR SEC 19

TIES DESTROYED, DUG AND FOUND CUT LIMESTONE 2' DEEP. SET ALUM. MON.

9/8/78 NEWARK TWP.

N 1/16th COR OF NW 1/4



DUG & FOUND NOTHING

GIBBS LAKE RD **SEC 26**