

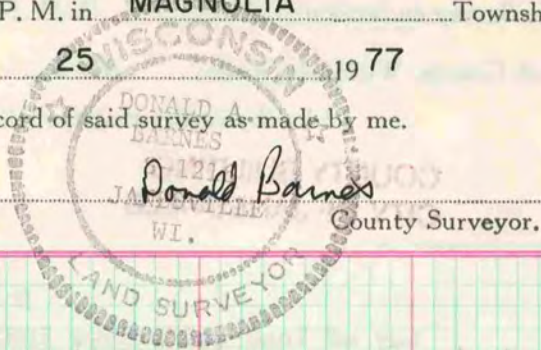
318 VOL. 5 PLAT AND RECORD

Of a Survey on Section 4, 5 T 3 N R 10 E. of the 4 P. M. in MAGNOLIA Township

Rock County, Wisconsin, made AUGUST the 25 1977

I hereby certify that the following is a correct record of said survey as made by me.

COUNTY BUILDING CITY OF JANESVILLE

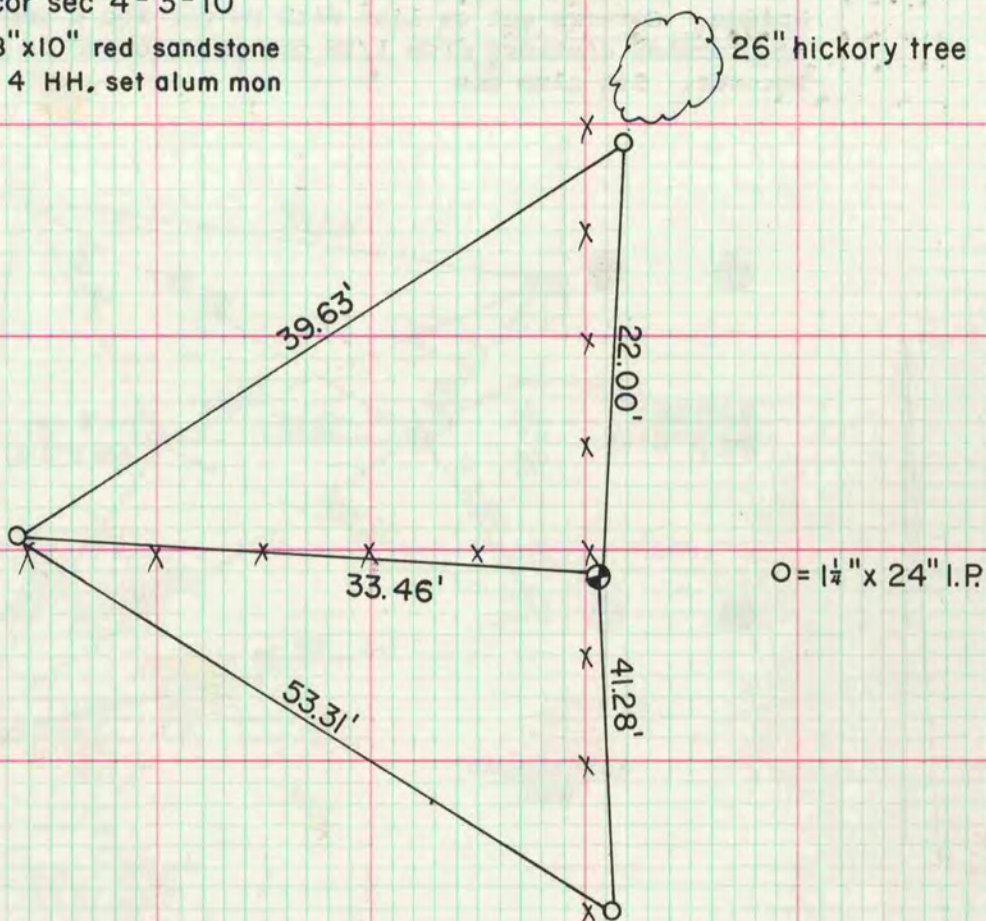


SW cor sec 4-3-10
fd 24"x18"x10" red sandstone
Ø by 4 HH, set alum mon

26" hickory tree



MICROFILMED



W 1/4 cor sec 5-3-10
fd HH 16 x 10 x 7
set alum mon

O = 1 1/4" x 24" I.P.

