

PLAT AND RECORD

VOL. 5

Of a Survey on Section 33 T 4 R 12 E. of the 4 P. M. in FULTON Township

Rock County, Wisconsin, made MARCH 14 1978

I hereby certify that the following is a correct record of said survey as made by me.

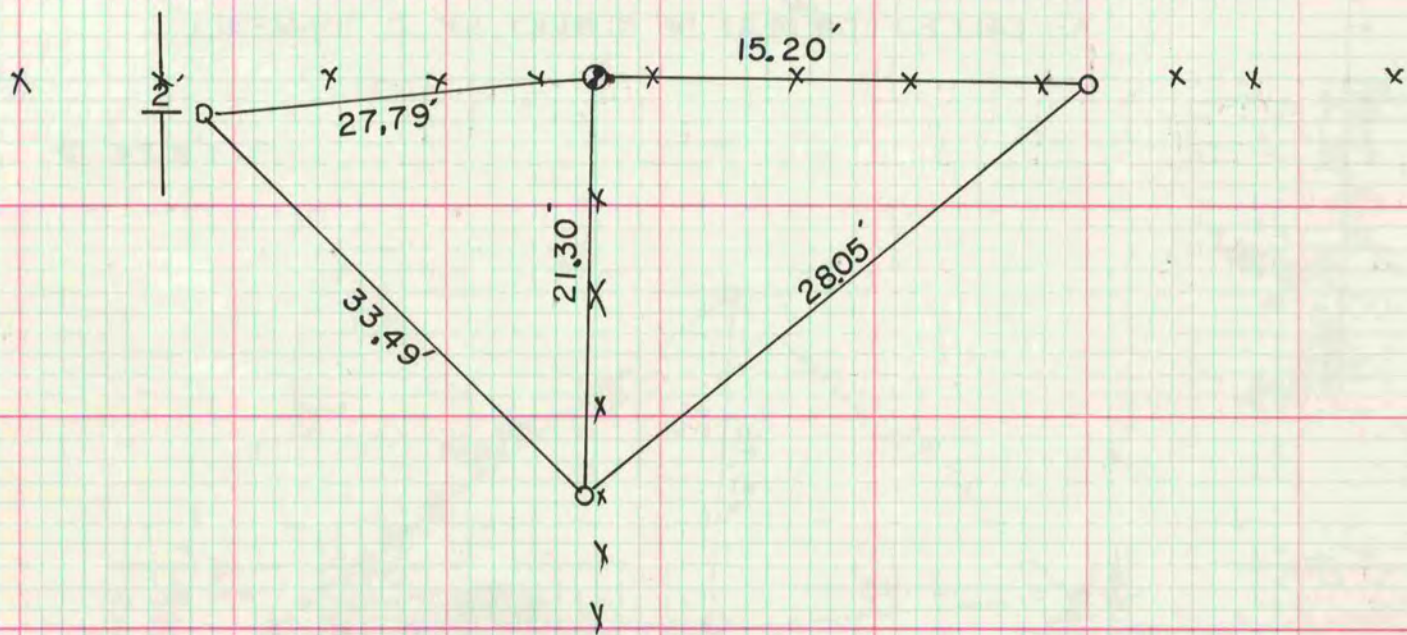
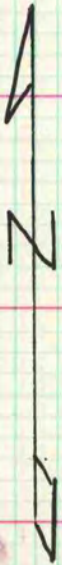
COUNTY BUILDING CITY OF JANESVILLE



W 1/4 CORNER SEC 33

FOUND 1 3/4" X 25" IP 3HH SET ALUM MON

o 1" X 24" IP



MICROFILMED

MICROFILMED