

V-1  
MICROFILMED

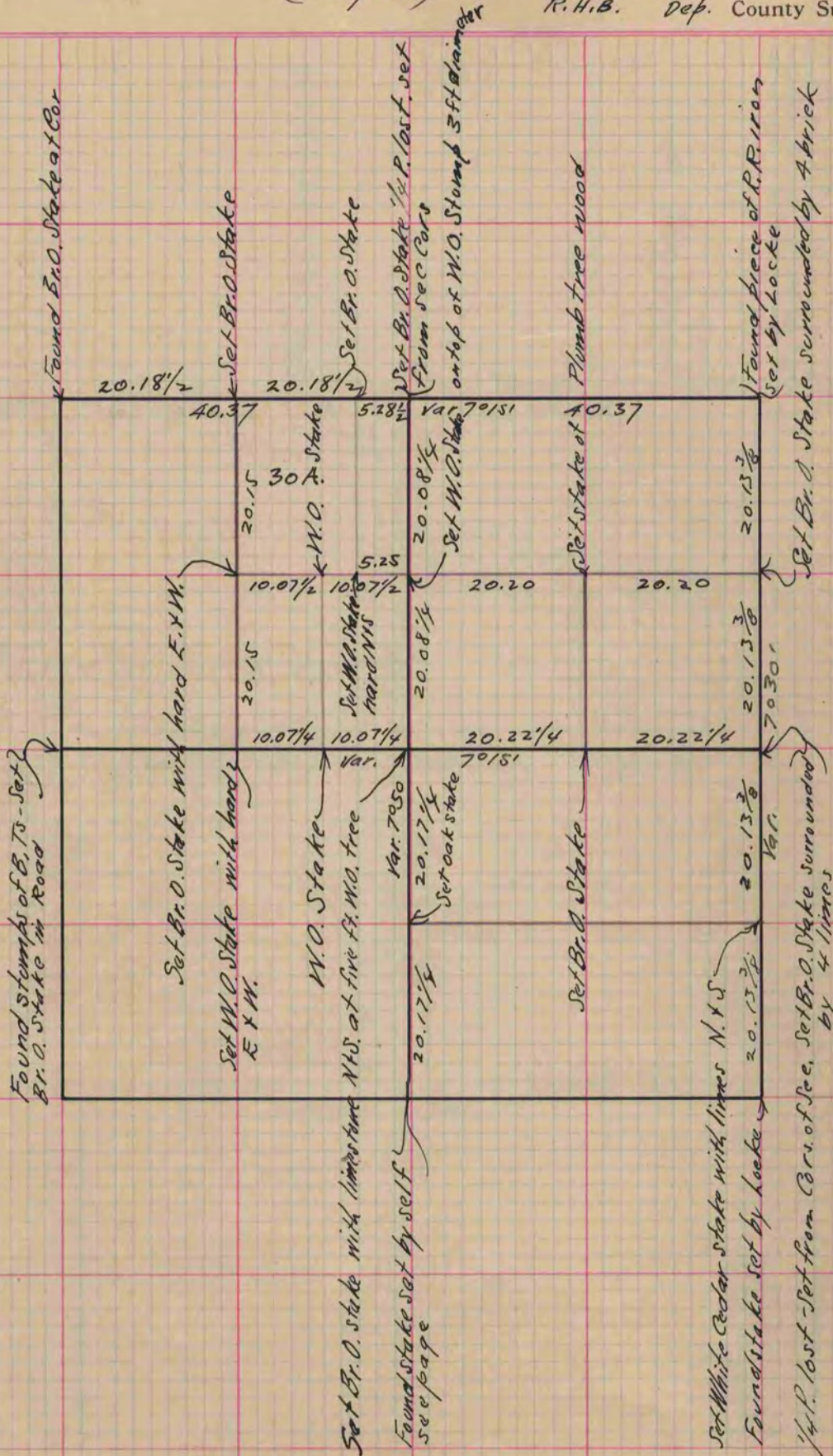
PLAT AND RECORD

Of a Survey on Section 22 T 3 R 10 E. of the 4 P. M. in Magnolia Township  
 Rock County, Wisconsin, made October the 21<sup>st</sup> 1869

COUNTY BUILDING  
 CITY OF JANESVILLE

hereby certify that the following is a correct record of said survey as made by me.

(Signed) R. K. Lee  
 R. H. B. Dep. County Surveyor.



Copied from Page 285 Vol. 1. Original County Surveyors Record