

PLAT AND RECORD

103
V-5

COUNTY BUILDING
CITY OF JANESVILLE

Of a Survey on Section 10 T 3N R 10 E. of the 4 P. M. in MAGNOLIA Township

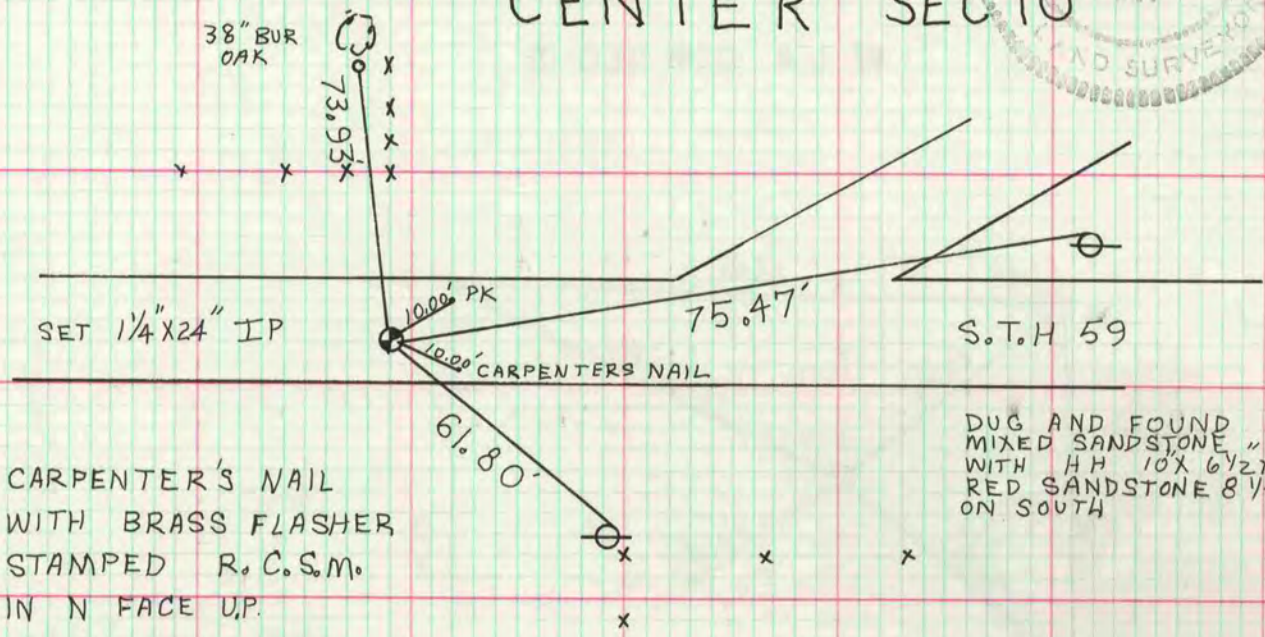
Rock County, Wisconsin, made MAY the 14 1976

I hereby certify that the following is a correct record of said survey as made by me.

Donald Barnes
County Surveyor.

MICROFILMED

CENTER SEC 10

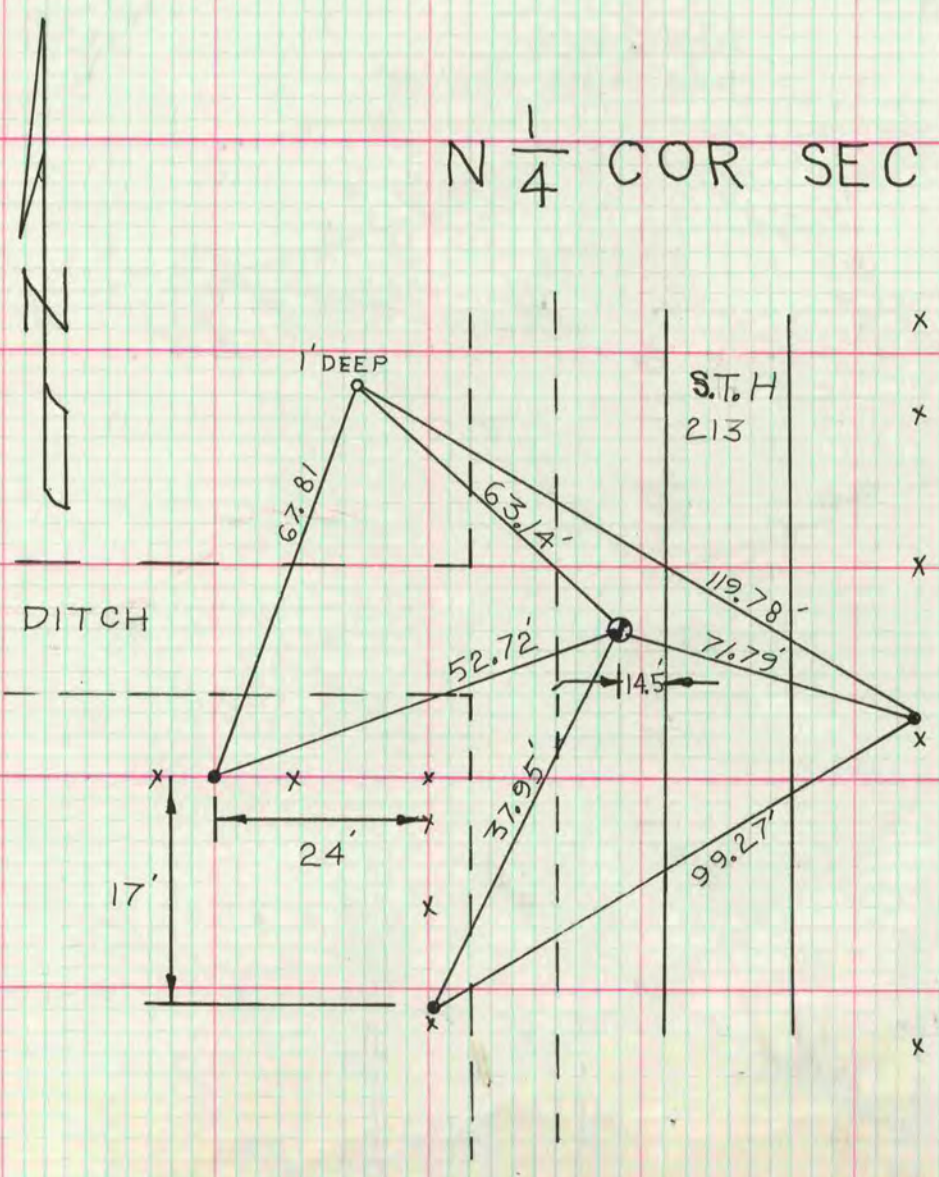


CARPENTER'S NAIL
WITH BRASS FLASHER
STAMPED R. C. S. M.
IN N FACE UP.

DUG AND FOUND 1.5' DEEP
MIXED SANDSTONE " 18 X 14 X 2 1/2"
WITH HP 10 X 6 1/2 X 5" ON NORTH,
RED SANDSTONE 8 1/2" X 6 1/2 X 2"
ON SOUTH

NOTE: CENTER IS NOT ON E/W 1/4 COR
LINE. WAS SET ACCORDING TO
THE GENERAL LAWS OF WIS., 1862 CHAPTER 120 SEC 4
BY LOCKE IN 1863

N 1/4 COR SEC 10



SET MIDWAY BETWEEN NE & NW
CORNERS AND AT PRORATED
DISTANCE FROM CENTER OF SEC
10 ACCORDING TO SURVEY BY
S. D. LOCKE VOL 1 PG 195

SET BERNTSEN MON

- o 1/4" X 24 IP
- G-1 PISTON MON