

**MICROFILMED**

# PLAT AND RECORD

COUNTY BUILDING  
CITY OF JAMESVILLE

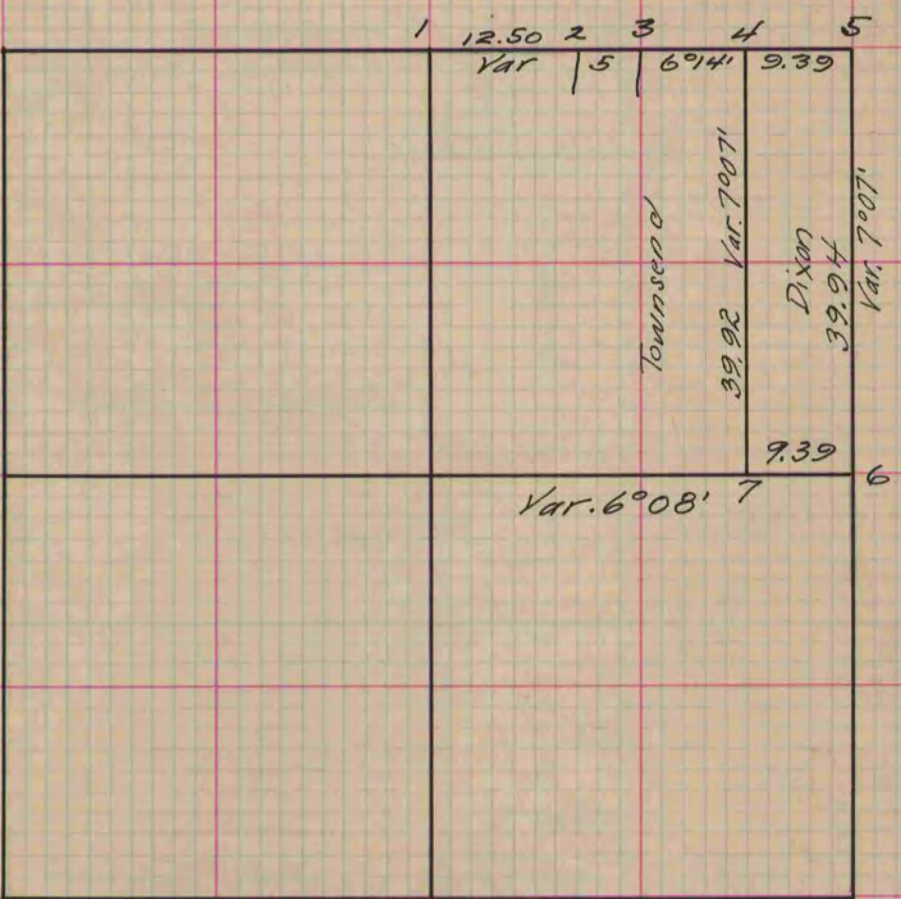
Of a Survey on Section 11 T 1 R 13 E. of the 4 P. M. in Turtle Township  
Rock County, Wisconsin, made February the 24<sup>th</sup> 1859

I hereby certify that the following is a correct record of said survey as made by me.

(Signed) Edward Ruger  
R.H.B. County Surveyor.

For Dixson & Townsend

Distances given in Chains  
Variations marked on the lines.



- Fig. 1 The same as Fig. 5. Sec. 2 of same Town
- " 2 Burr Oak 7 S 71° W 166 1/4
- " " " " 8 S 21° 35' E. 108 3/4 Var. 6° 14'
- " 5 the same as at Fig 3 Sec. 2 of same Town
- " 6 Government witness trees disagreed put in point by averaging error.

Copied from Page 102 Vol. Original County Surveyors Record.