

PLAT AND RECORD

VOL. 5

15
V-5

Of a Survey on Section 31 T. 1 R. 14 E. of the 4 P. M. in CLINTON Township

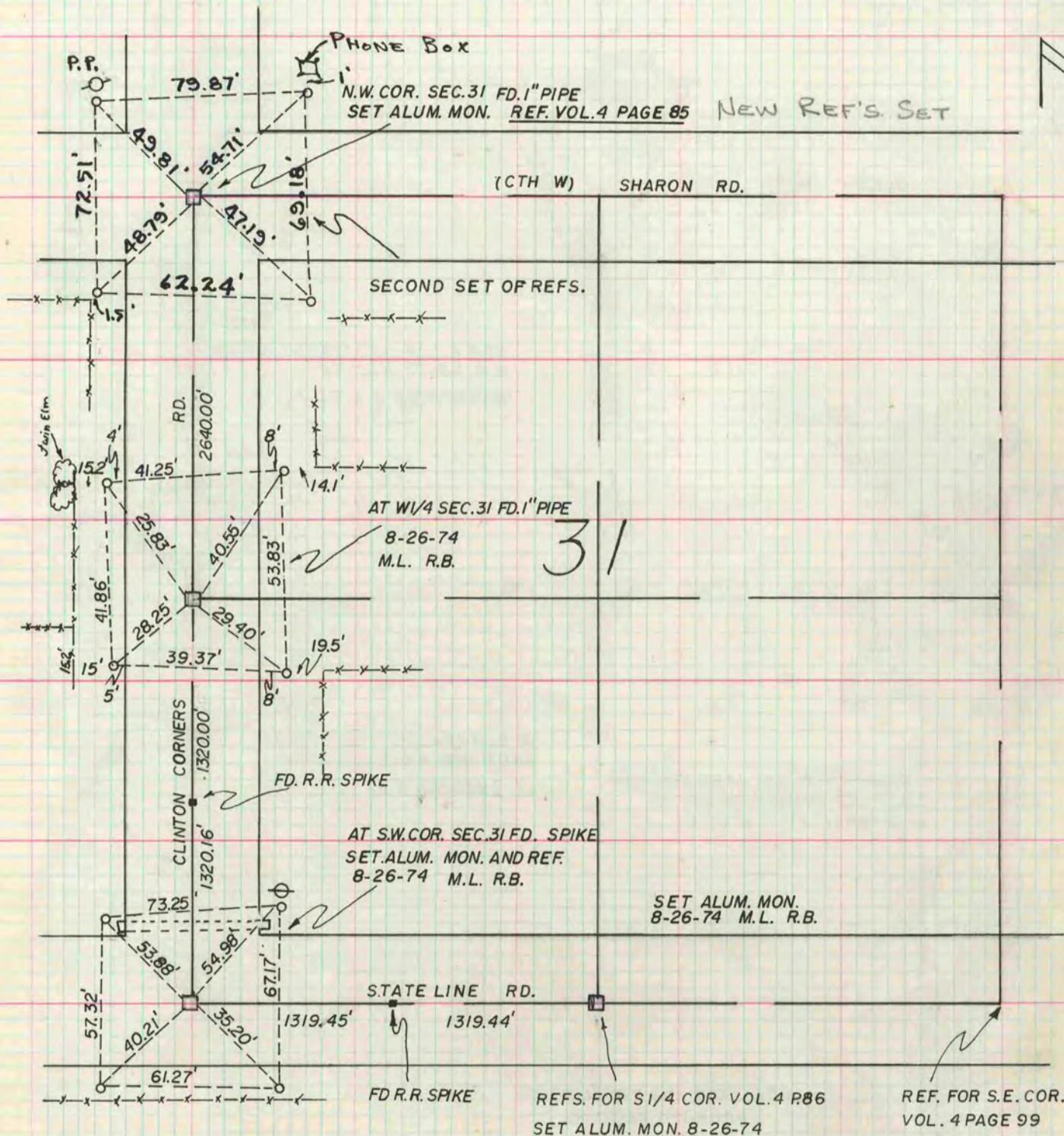
Rock County, Wisconsin, made AUGUST the 26th 1974

I hereby certify that the following is a correct record of said survey as made by me.

Hugh Lee
County Surveyor,

COUNTY BUILDING
CITY OF JANESVILLE
MICROFILMED

THE GEO. D. BARNARD COMPANY, ST. LOUIS



SEE BOOK 170 PAGES 125-129