

# PLAT AND RECORD VOL. 5

75  
V-5

COUNTY BUILDING  
CITY OF JANESVILLE

Of a Survey on Section 3-10<sup>T</sup> 4 R. 10 E. of the 4 P. M. in UNION Township

Rock County, Wisconsin, made APRIL the 1975

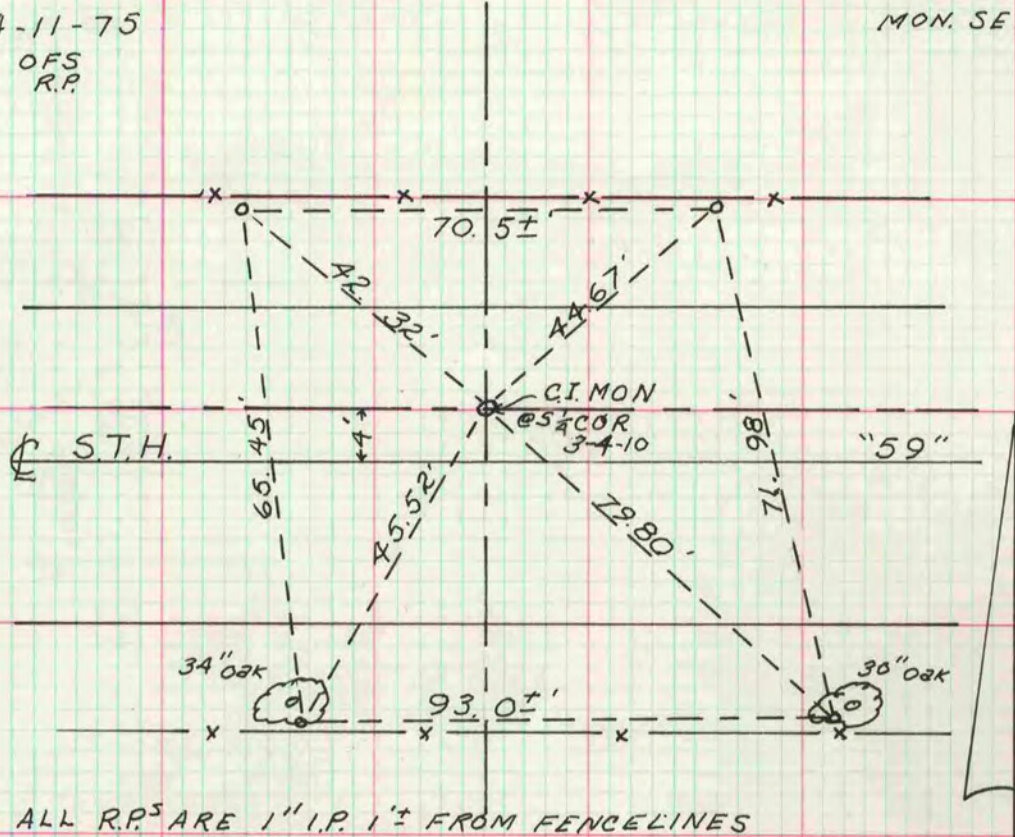
I hereby certify that the following is a correct record of said survey as made by me.

**MICROFILMED**

*Alto F. Schroeder*  
County Surveyor.

REF. SET 4-11-75  
OFS  
R.P.

MON. SET BY RB  
ML  
1972



ALL R.P.'S ARE 1" I.P. 1± FROM FENCE LINES

S 1/4 COR

R.P.'S ARE 1" X 24" I.P.

4-21-75  
OFS.  
R.P.

F.B. 20/4

