

# PLAT AND RECORD VOL. 5

51  
V-5

COUNTY BUILDING  
CITY OF JANESVILLE

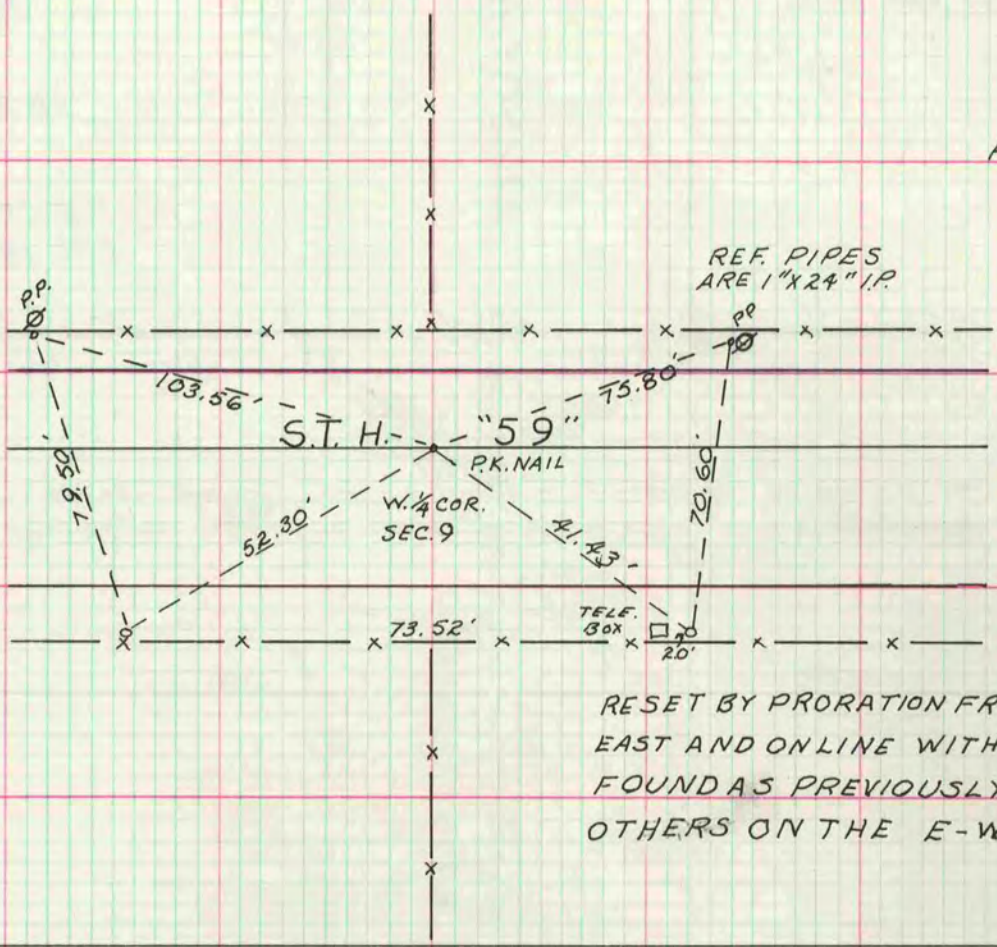
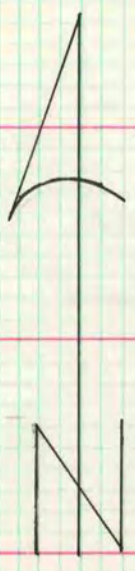
Of a Survey on Section 9 T 3 R 10 E. of the 4 P. M. in MAGNOLIA Township

Rock County, Wisconsin, made MARCH the 10<sup>TH</sup> 19 75

I hereby certify that the following is a correct record of said survey as made by me.

**MICROFILMED**

*Otto Schroeder*  
County Surveyor.



O.F.S.  
R.P.  
F.B. 12 Pg. 1

REF. PIPES  
ARE 1" X 24" I.P.

RESET BY PRORATION FROM WEST AND  
EAST AND ONLINE WITH MONUMENTS  
FOUND AS PREVIOUSLY SET BY  
OTHERS ON THE E-W

ALL R.P.'S ARE  
1" X 24" I.P.

4-17-75  
O.F.S.  
R.P.

## E 1/4 CORNER SEC 9-3-10

