

PLAT AND RECORD

176

V-5

Of a Survey on Section II T 4 R 13 E. of the 4 P. M. in Milton Township

Rock County, Wisconsin, made July the 1st, 1976

I hereby certify that the following is a correct record of said survey as made by me.

COUNTY BUILDING
CITY OF JANESVILLE



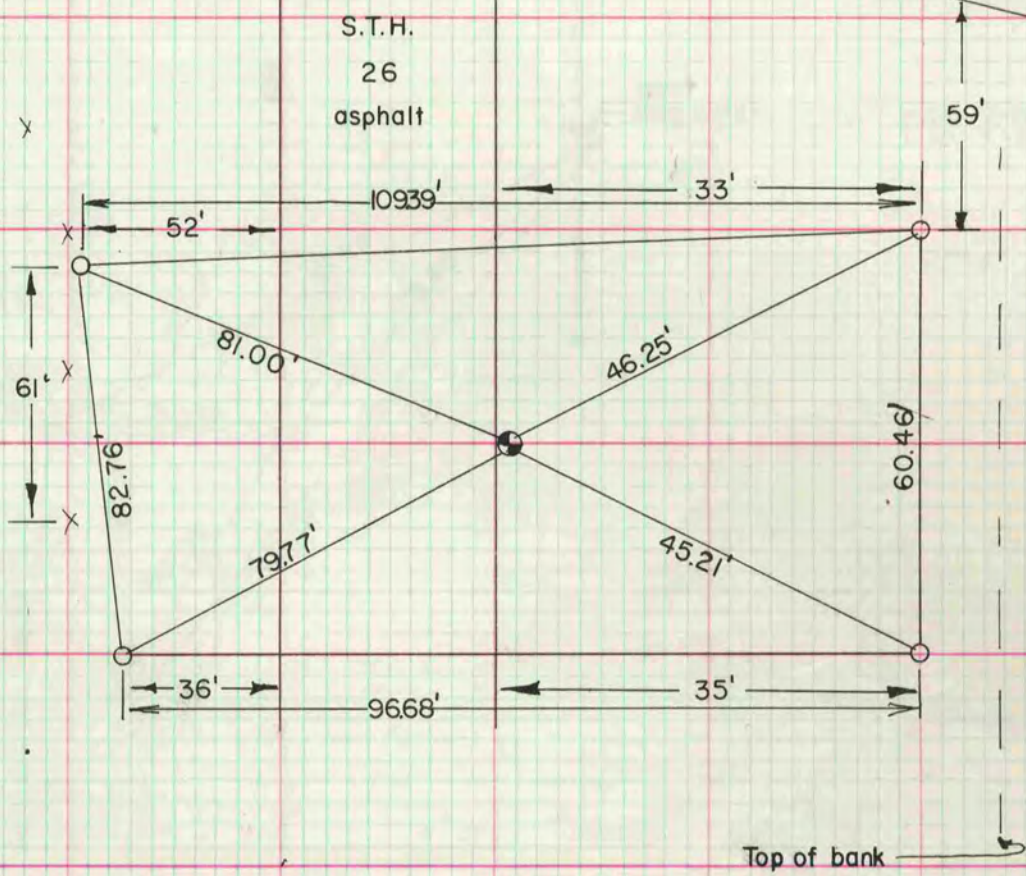
County Surveyor.

THE GED. P. BARNARD COMPANY, ST. LOUIS

MICROFILMED

Sec II N 1/4 cor
dug large hole found nothing, cor
declared lost. Set corner by single
proportionate measurement.

SET ALUM. MON



NW cor
Sec II

REC(RUGER) 2659.8
COMPUTED 2664.17

N 1/4 cor
Sec II

REC(RUGER) 2659.8
COMPUTED 2664.17

NE cor
Sec II