

# MICROFILMED PLAT AND RECORD

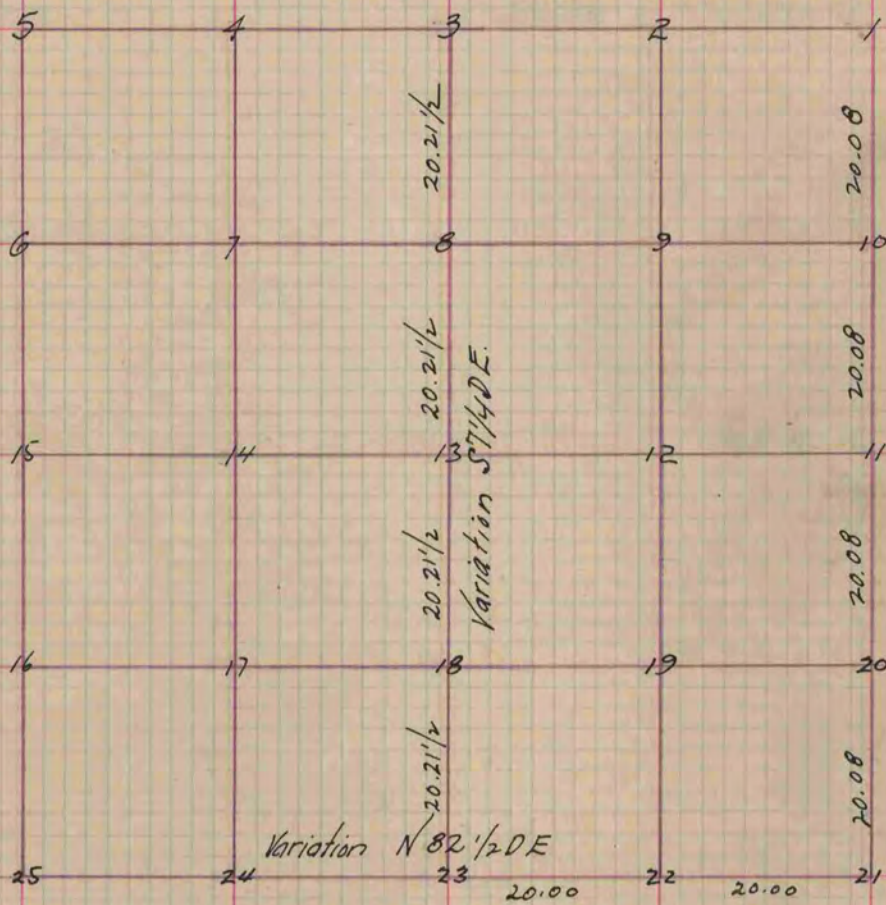
56  
VI

Of a Survey on Section 18 T 3 R 10 E. of the 4 P. M. in Magnolia Township  
 Rock County, Wisconsin, made December the 21<sup>st</sup> 1855

I hereby certify that the following is a correct record of said survey as made by me.

COUNTY BUILDING  
CITY OF JANESVILLE

(Signed) Joseph Church  
R.H.B. County Surveyor.



- Fig 13 Centre of Sec Wit Br. O. 12 N 36 E 26°  
245 7 1/2 W. 126 1/2 E
- " 11 No bearing trees made Corner Wit. to Corner Br. O. 18 N 18 1/2 W. 69  
Stone School house N.W. corner S 20 1/2 E 145
- " 17 Br. O. 12 N. 29 W. 91 Br. O. stump 16 N. 24 W. 34 1/2 E
- " 10 Br. O. 16 N 86 W 17 1/2 Br. O. 12 S. 32 W. 20 1/2
- " 7 W. O. 20 N. 56 E 53 W. O. 18 N 1 1/2 W 57 1/2 E

Copied from Page 56 Vol. 1. Original County Surveyors Record.