

# VOL. 5 PLAT AND RECORD

COUNTY BUILDING  
CITY OF JANESVILLE

Of a Survey on Section 14-26 T 2 R 13 E, of the 4 P. M. in LA PRAIRIE Township

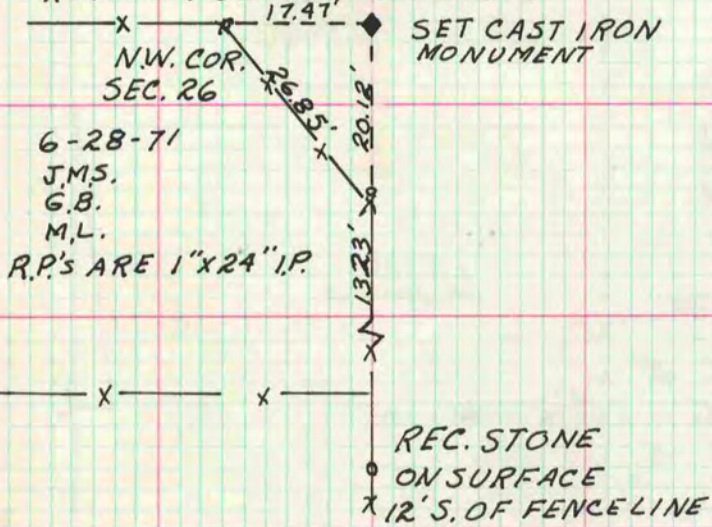
Rock County, Wisconsin, made the 19

I hereby certify that the following is a correct record of said survey as made by me.

**MICROFILMED**

County Surveyor. *OKS*

DUG & FD. DEEP ROTTED POST WITH  
LIMESTONE N.W. & N.W. & ANOTHER  
ROTTED POST ON EAST SIDE.



6-28-71  
J.M.S.  
G.B.  
M.L.  
R.P.'S ARE 1" X 24" I.P.

FD. CUT STONE 1/2' BELOW ROAD  
SURFACE @ N.W. COR SEC. 14-2-13  
SET R.R. SPIKE OVER STONE

7-29-69  
J.M.S.  
B.W.  
A.R.

