

Of a Survey on Section 27 T 3 R 13 E. of the 4 P. M. in HARMONY Township

Rock County, Wisconsin, made JULY the 17th 1973

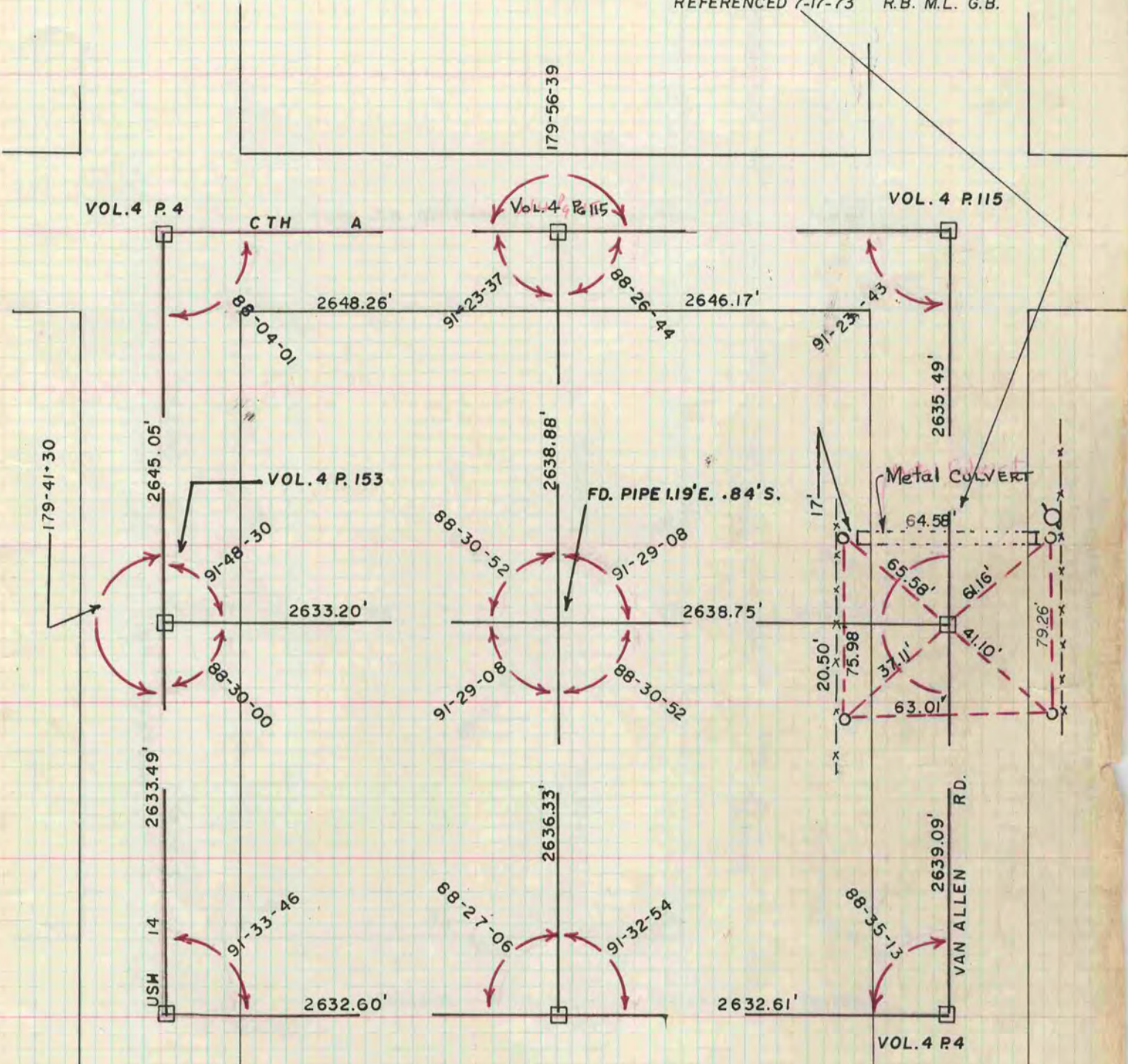
I hereby certify that the following is a correct record of said survey as made by me.

*Hugh Bee*  
County Surveyor.

**MICROFILMED**

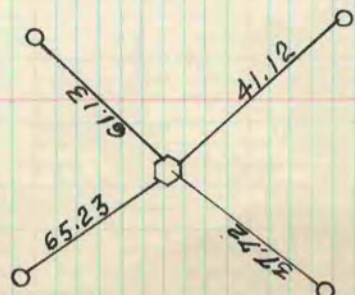
**JANESVILLE SET [LOOSE-LEAF BOUND]**

AT E 1/4 COR. SEC. 27-3-13 DUG AND FOUND  
CUT LIMESTONE MONUMENT  
REFERENCED 7-17-73 R.B. M.L. G.B.

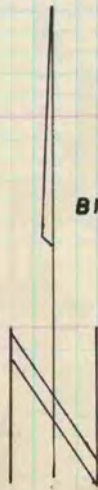


COPIED FROM K.H. BATTERMAN PG 1 VOL. 5  
NOV 20, 1975 D.A.B

E 1/4 SEC 27



9/30/74 H COMBS  
CALLED IN CORRECTED  
TIES TO STONE COR



BK. 169 P. 54