

MICROFILMED

# PLAT AND RECORD

Of a Survey on Section 15 T 3 R 13 E. of the 4 P. M. in Harmony Township

Rock County, Wisconsin, made December 8<sup>th</sup> the 1881

I hereby certify that the following is a correct record of said survey as made by me.

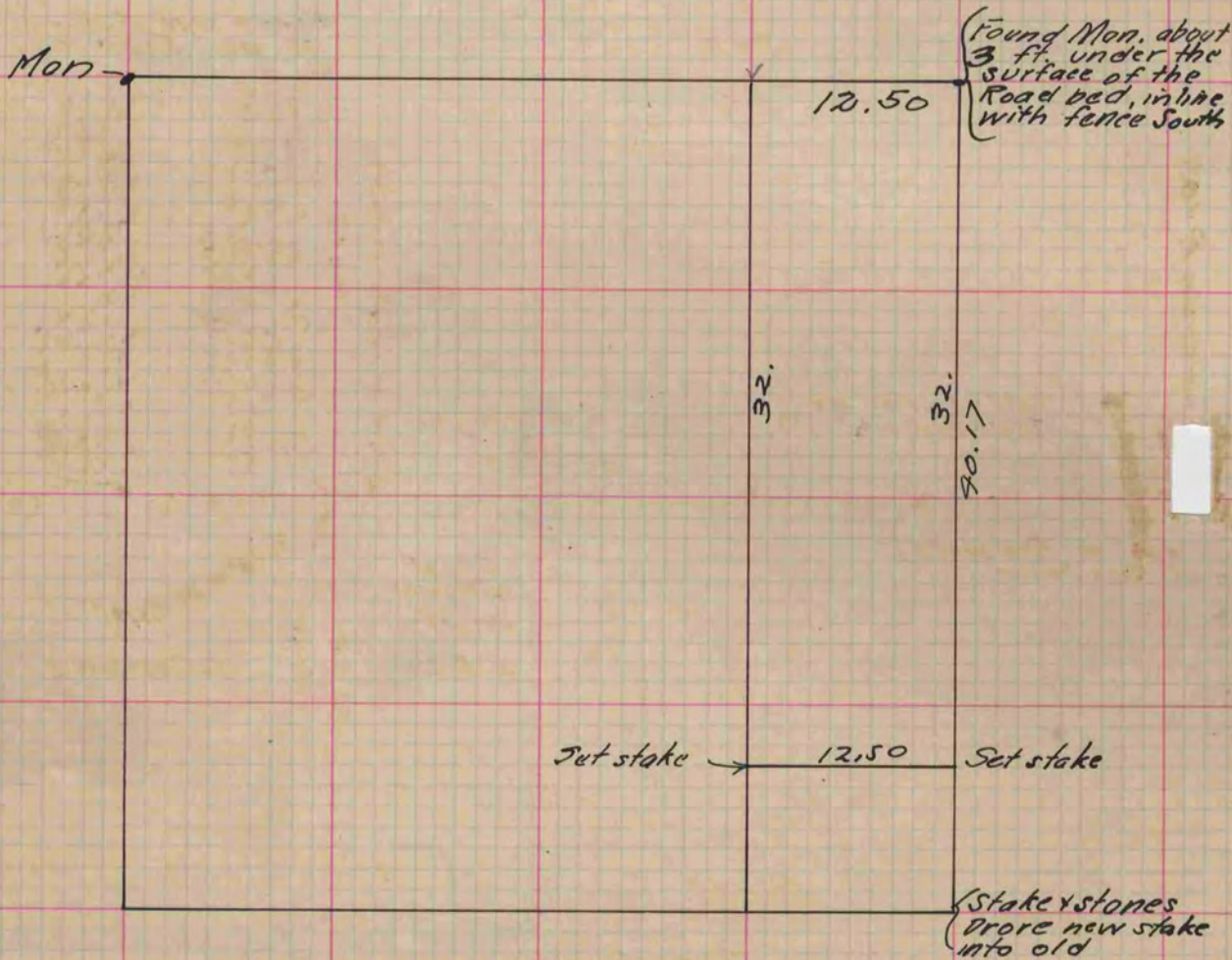
COUNTY BUILDING  
CITY OF JANESVILLE

(Signed) J. A. Holmes

R. H. B.

County Surveyor

50 Acres from N.E. part, of N.W. 1/4 Sec 15 Harmony



Copied from p. 279 Vol. 2. County Surveyors Record.