

PLAT AND RECORD

325
V-2

MICROFILMED

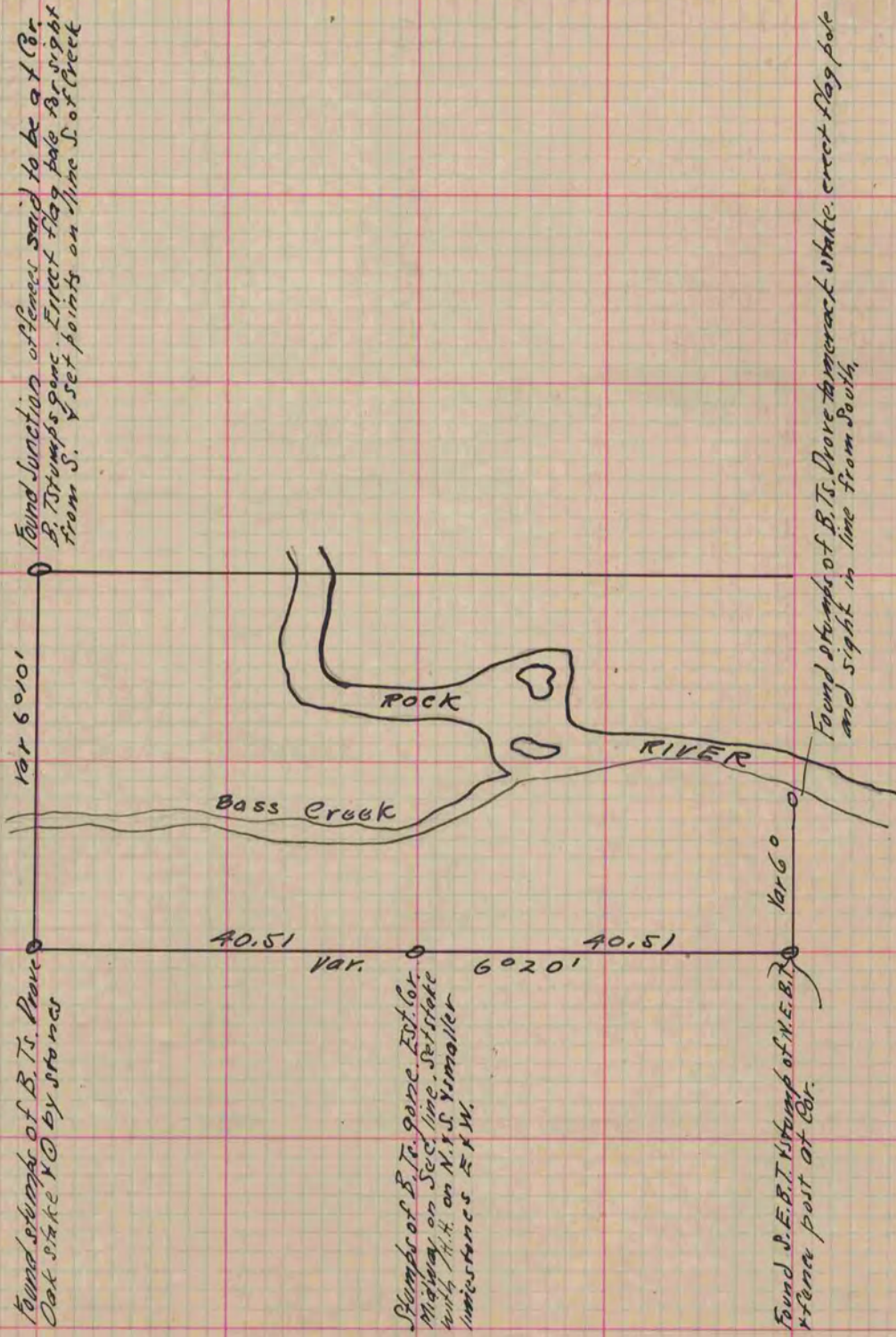
COUNTY BUILDING
CITY OF JANESVILLE

Of a Survey on Section 27 T 2 R 12 E. of the 4 P. M. in Rock Township

Rock County, Wisconsin, made June the 6th 1881

I hereby certify that the following is a correct record of said survey as made by me.

(Signed) R.N. Lee
R.H.B. County Surveyor.



Copied from P. 267 Vol. 2. County Surveyors Record.