

72  
1-2  
PLAT AND RECORD

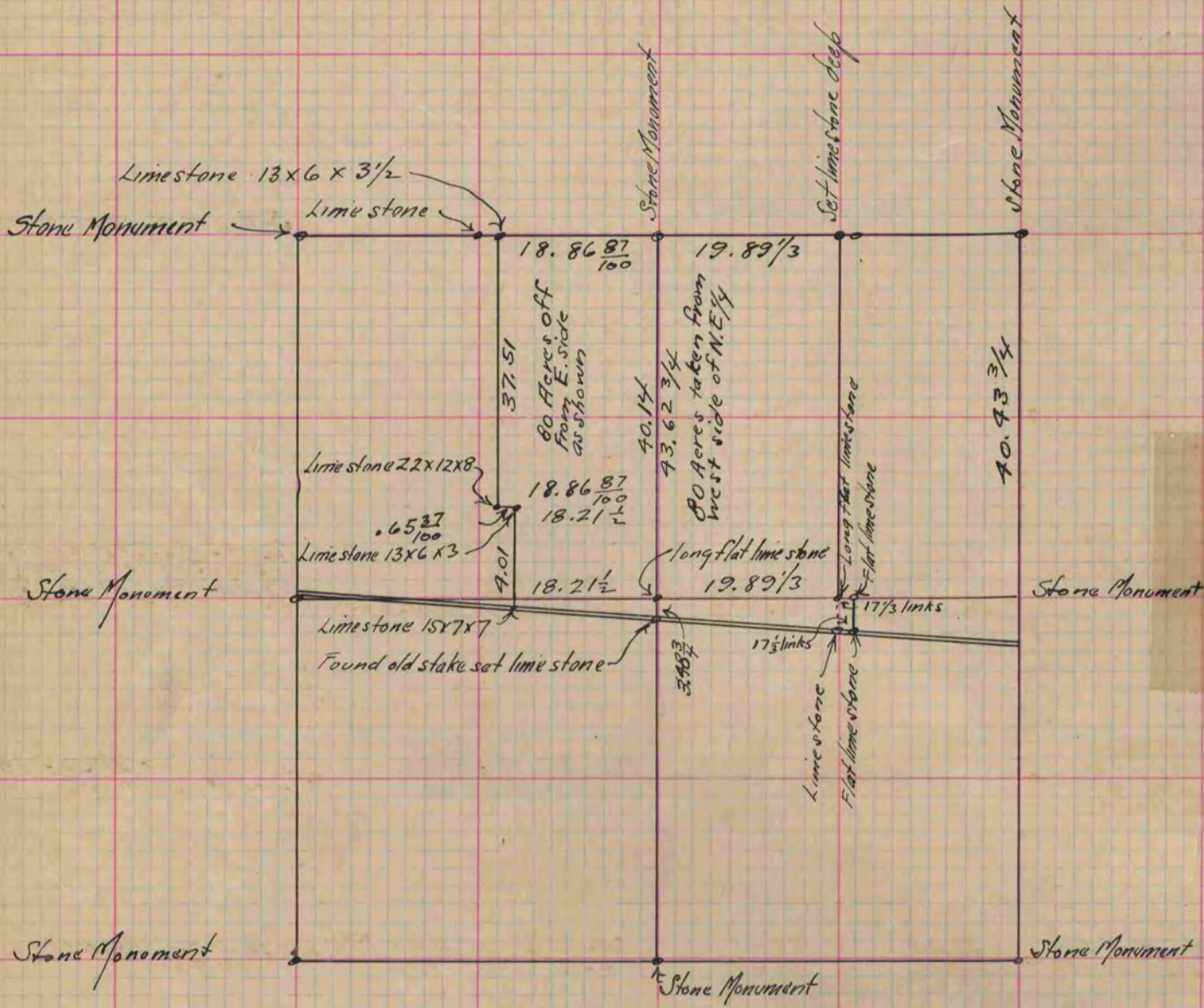
MICROFILMED

Of a Survey on Section 3 T 2 R 13 E. of the 4 P. M. in La Prairie Township  
Rock County, Wisconsin, made September the 29<sup>th</sup> 1871  
June 25 - 1883

I hereby certify that the following is a correct record of said survey as made by me.

COUNTY BUILDING  
CITY OF JANESVILLE

(Signed) Edward Ruger  
R.H.B. County Surveyor.



Copied from Page 43 Vol. 2 Original County Surveyors Record