

MICROFILMED

PLAT AND RECORD

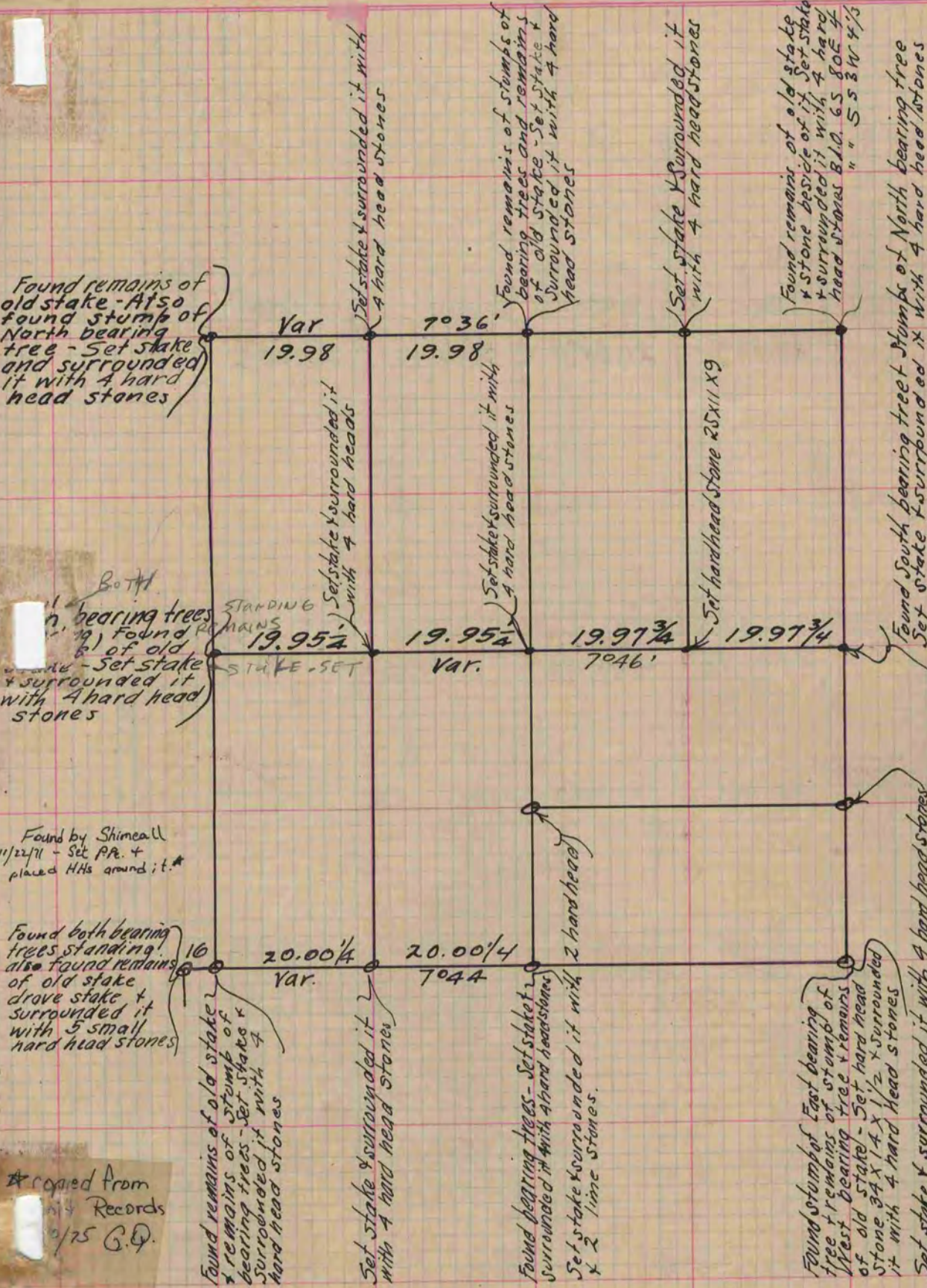
27  
V-2

Of a Survey on Section 33 T 4 R 12 E. of the 4 P. M. in Fulton Township  
Rock County, Wisconsin, made May the 17<sup>th</sup> 1870

I hereby certify that the following is a correct record of said survey as made by me.

COUNTY BUILDING  
CITY OF JANESVILLE

(Signed) Edward Rager Deputy  
R.H.B. County Surveyor.



Copied from P. 20, Vol. 2 Original County Surveyors Record