

V-2 MICROFILMED

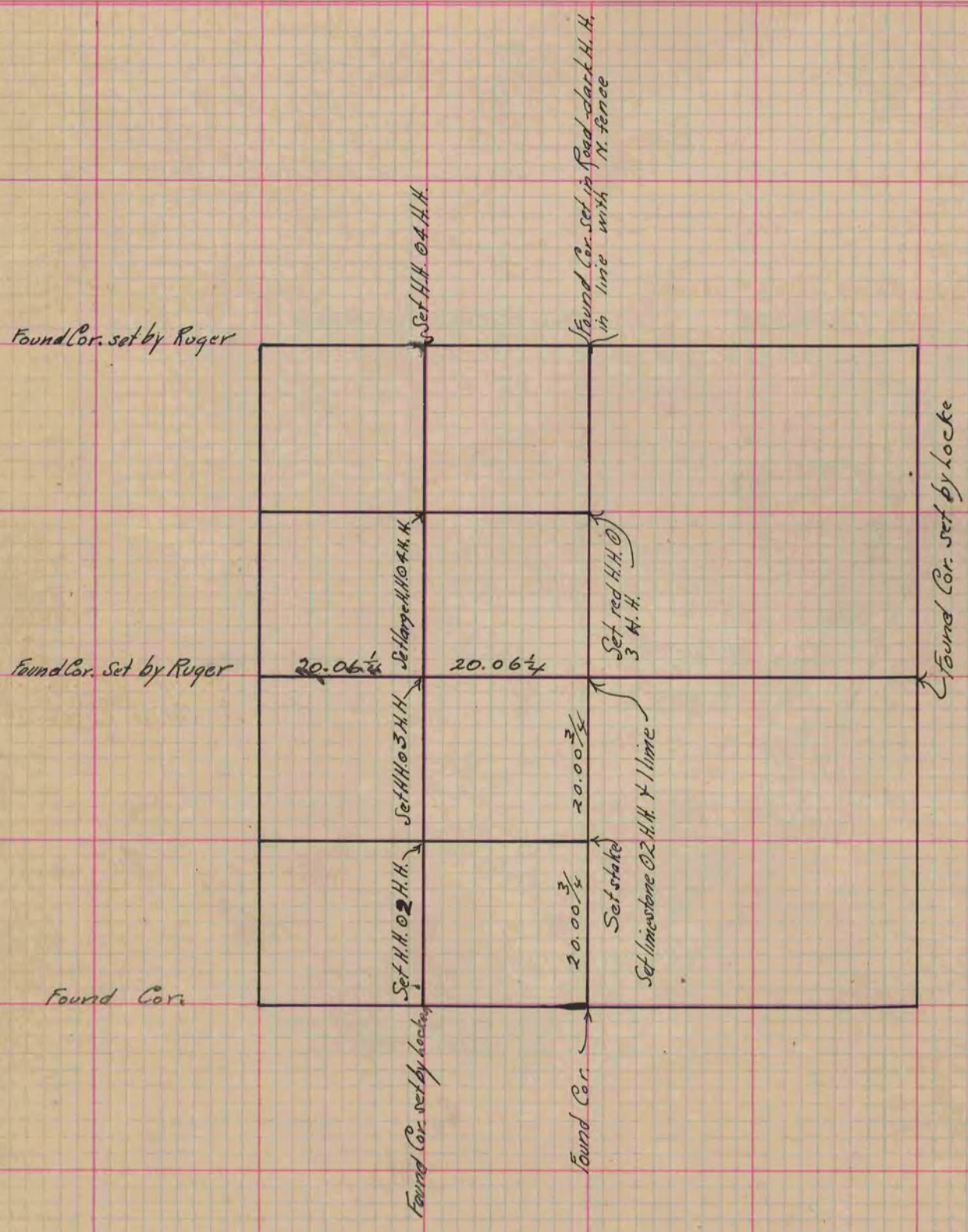
PLAT AND RECORD

Of a Survey on Section 29 T 2 R 14 E. of the 4 P. M. in Bradford Township
Rock County, Wisconsin, made June the 3rd 1873

I hereby certify that the following is a correct record of said survey as made by me.

COUNTY BUILDING
CITY OF JANESVILLE

(Signed) R. K. Lee of Deputy
R. H. B. County Surveyor.



Copied from Page 61 Vol. 2. Original County Surveyors Record