

PLAT AND RECORD

MICROFILMED

Of a Survey on Section 23+26 T 2 R 12 E. of the 4 P. M. in Rock Township

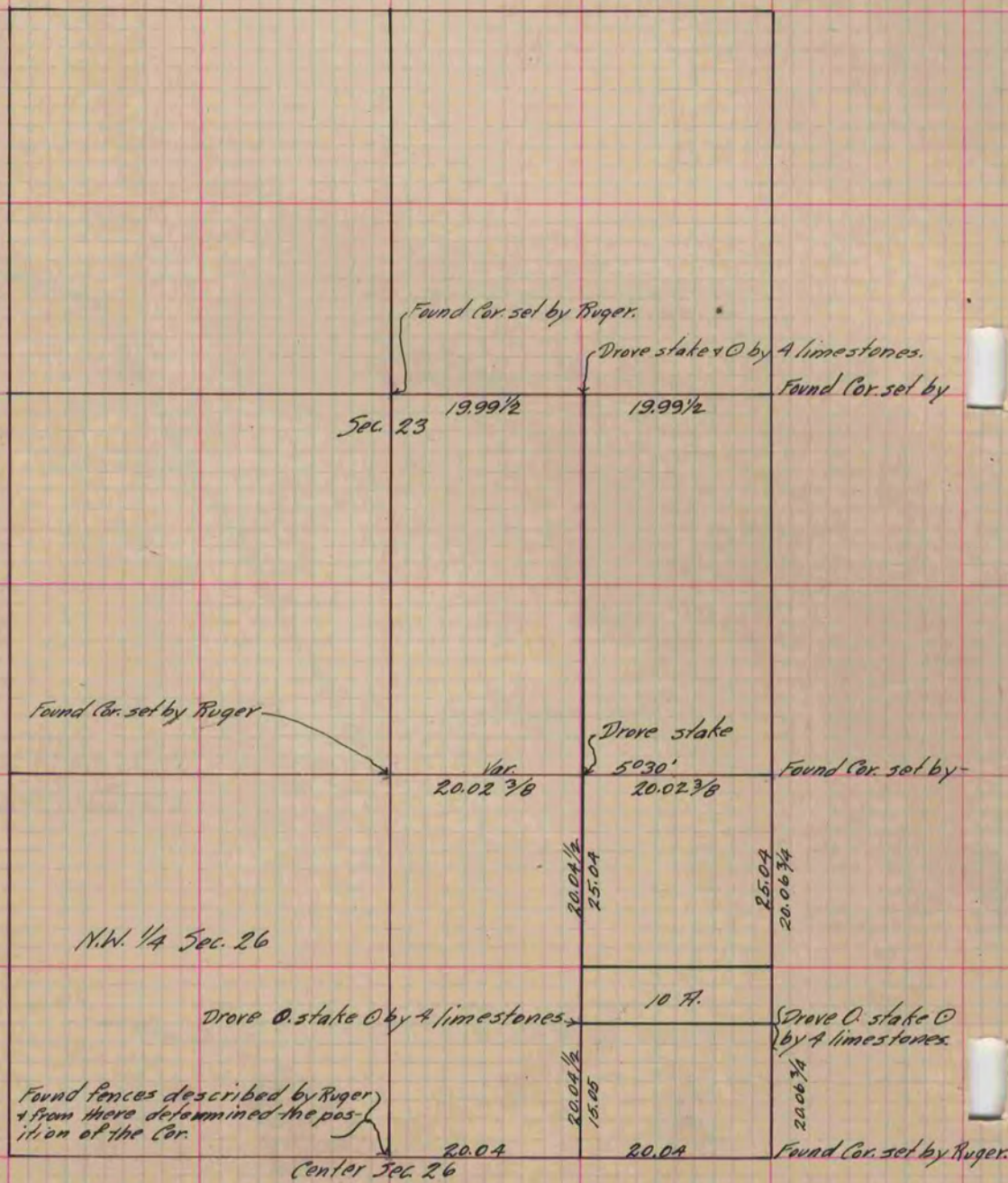
Rock County, Wisconsin, made May 8th the 1882

I hereby certify that the following is a correct record of said survey as made by me.

COUNTY BUILDING
CITY OF JANESVILLE

(Signed) R. H. Lee
R. H. L.

Dep. County Surveyor.



Copied From P. 298 Vol. 2 County Surveyor's Record.