

MICROFILMED

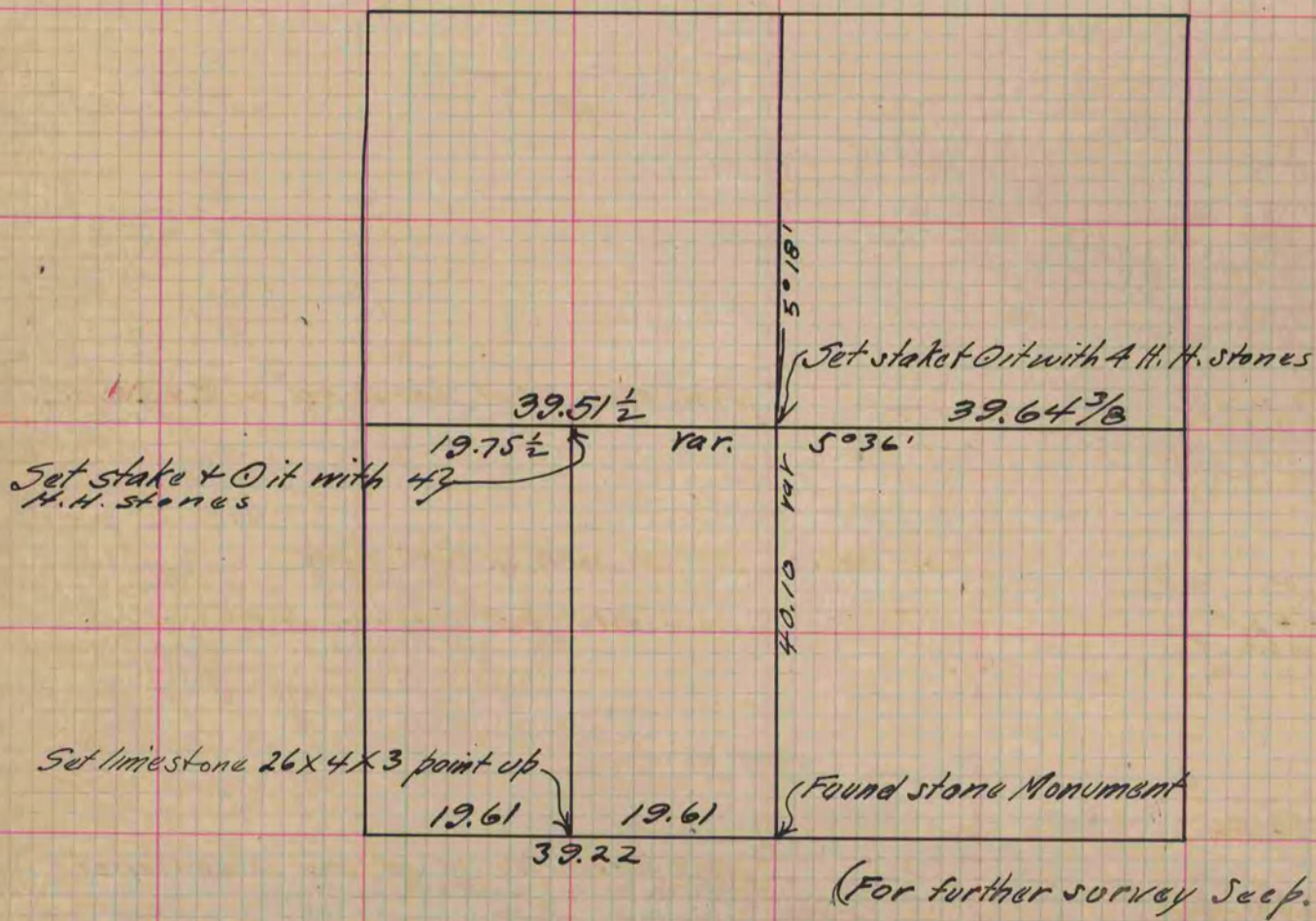
PLAT AND RECORD

Of a Survey on Section 3 T 3 R 13 E. of the 4 P. M. in Harmony Township
Rock County, Wisconsin, made October the 20 1886

I hereby certify that the following is a correct record of said survey as made by me.

COUNTY BUILDING
CITY OF JANESVILLE

(Signed) Edward Ruger
R.H.B. County Surveyor



Copied from P. 230 Vol. 2. County Surveyors Record.