

MICROFILMED

PLAT AND RECORD

Of a Survey on Section 2 T 2 R 12 E. of the 4 P. M. in Rock Township

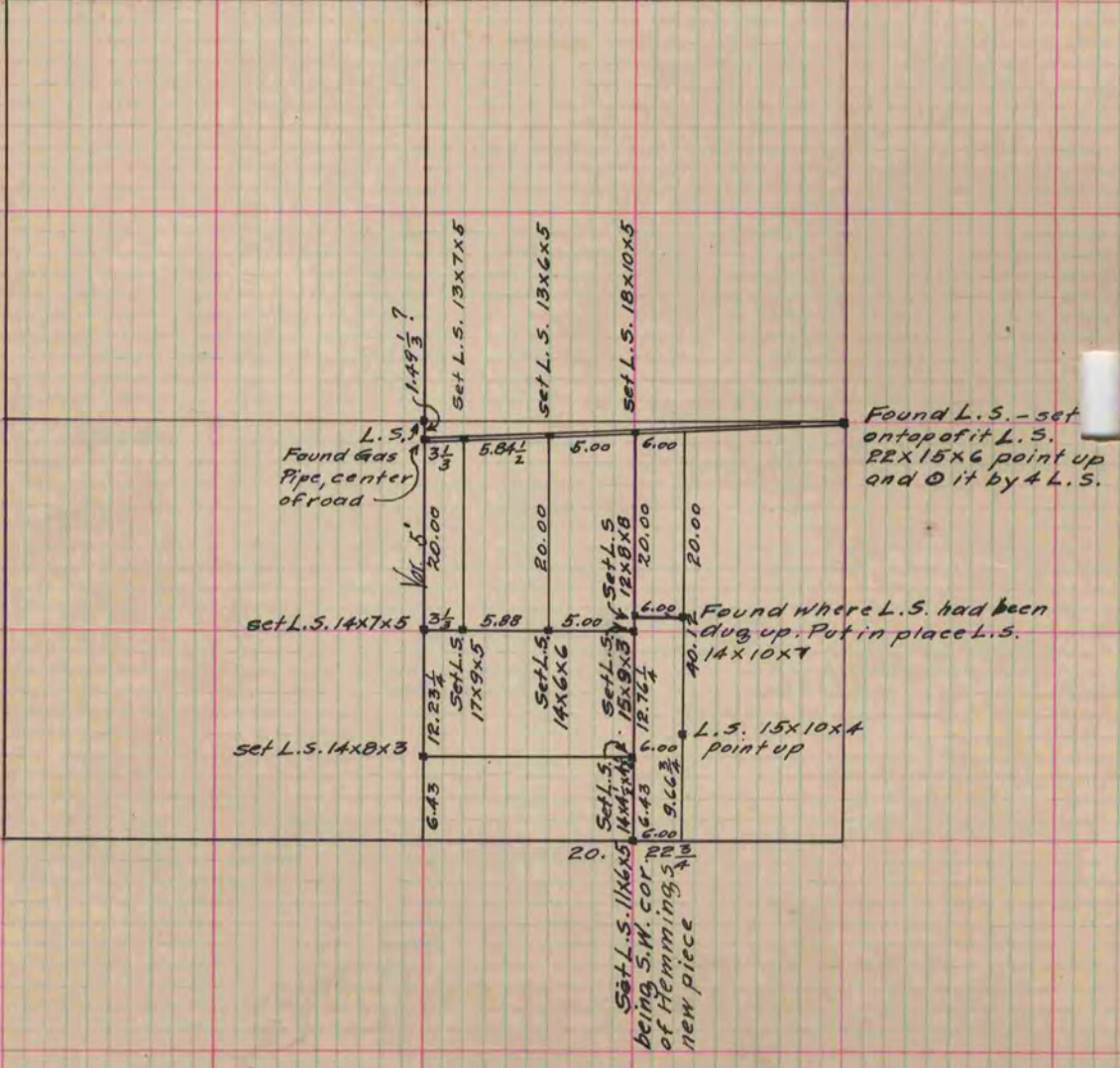
Rock County, Wisconsin, made Oct. the 3d. & 7th. 1884

I hereby certify that the following is a correct record of said survey as made by me.

COUNTY BUILDING
CITY OF JANESVILLE

(Signed) Edward Ruger
R. H. B.

County Surveyor.



See plat below.

Copied from P. 305 Vol. 2 County Surveyors Record.