

Village of Monroe

COUNTY BUILDING  
CITY OF JANESVILLE

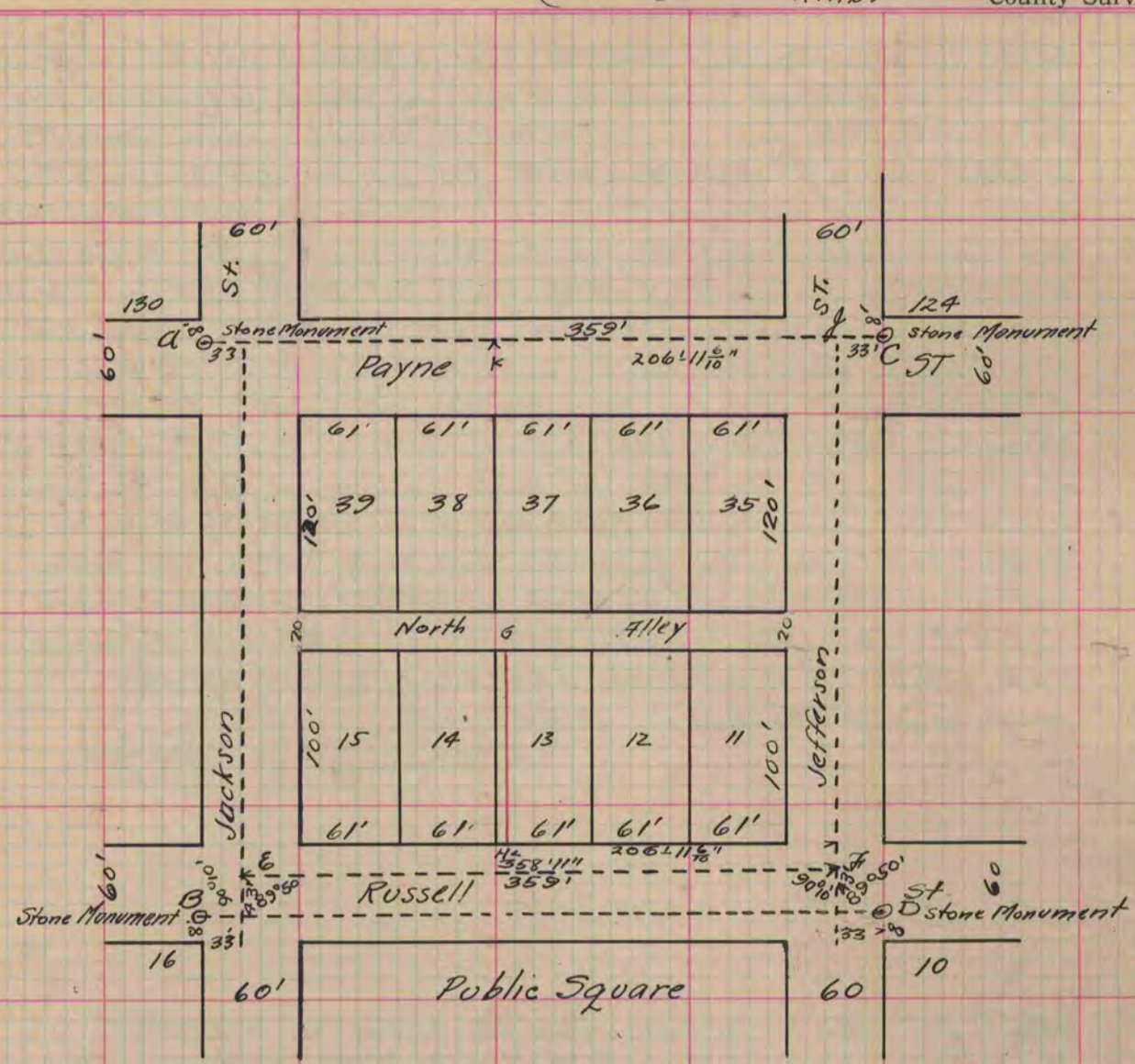
Of a Survey on Section T R E. of the 4 P. M. in Township

Greene  
Rock County, Wisconsin, made January 30<sup>th</sup> 1874 & the 3<sup>rd</sup> March 1875

I hereby certify that the following is a correct record of said survey as made by me.

(Signed) Edward Ruger  
R.H.B.

County Surveyor.



The above is a record and plat of a Survey of the East line of M. C. Smith and J. M. Bostwicks land in the Village of Monroe in Greene County, Wisconsin. Said land being the East part of Lot 14 and a strip 3 feet wide off the West side of Lot 13 in Ly Brand's Donation to Green County. The stone Monuments indicated on the plat were used as the basis for the survey, drill holes in the tops of said stones determined the precise points. Jackson and Jefferson Streets are not at rights Angles to Payne & Russell streets into ten minutes as marked out and located on the ground, but they are parallel to each other as indicated on the plat. Off setted 33 feet east from the monuments designated A & B. and drew a right line between the points thus determined, Off setted 33 ft. West from the monuments designated C & D and drew a right line between points thus determined. Run on these right line lines so determined measured 43 feet North from a right line run between Monuments B & D. and drew a line parallel to it, these several lines indicated by dotted lines on the plat. Then measured on a right line between points E & F. and found the distance to be 358 feet and 11 inches, one inch

Continued on page 124

Copied from P. 81 Vol. 2. Original County Surveyors Record.