

# PLAT AND RECORD

**MICROFILMED**

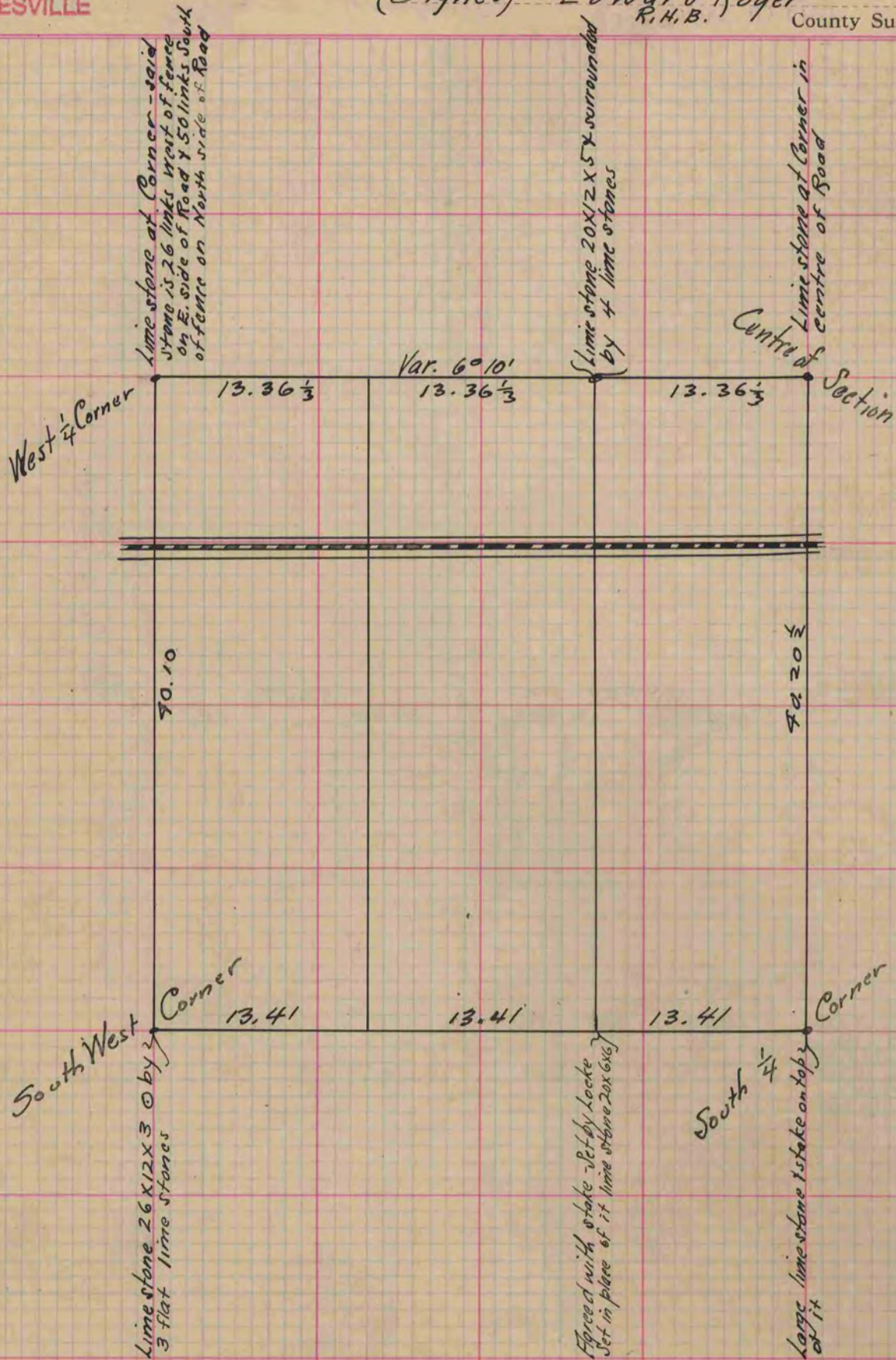
Of a Survey on Section <sup>S.W. 1/4</sup> 35 T 3 R 12 E. of the 4 P. M. in Janesville Township

Rock County, Wisconsin, made July the 18 4 19 1873

I hereby certify that the following is a correct record of said survey as made by me.

COUNTY BUILDING  
CITY OF JANESVILLE

(Signed) Edward Ruger  
R.H.B. County Surveyor.



Copied from Page 66 Vol. 2. Original County Surveyors Record