

PLAT AND RECORD

MICROFILMED

Of a Survey on Section 5 T 2 R 11 E. of the 4 P. M. in Plymouth Township
Rock County, Wisconsin, made May 5 the 8th 1865

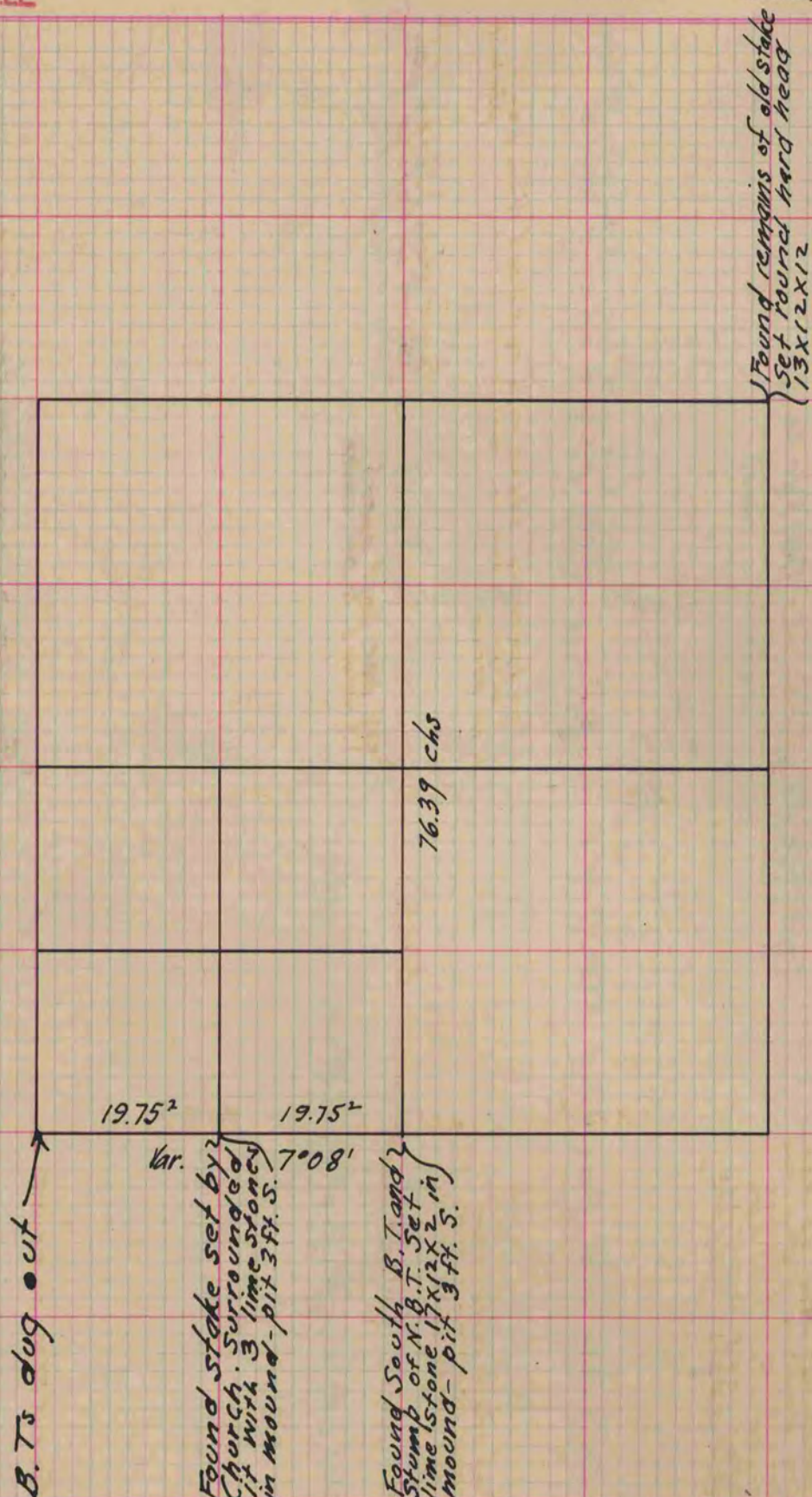
I hereby certify that the following is a correct record of said survey as made by me.

COUNTY BUILDING
CITY OF JANESVILLE

(Signed) S. D. Locke

R. H. B.

County Surveyor.



Copied from Page 218 Vol. 1. Original County Surveyors Record