

V-2  
MICROFILMED

# PLAT AND RECORD

Of a Survey on Section / T 2 R 12 E. of the 4 P. M. in Rock Township

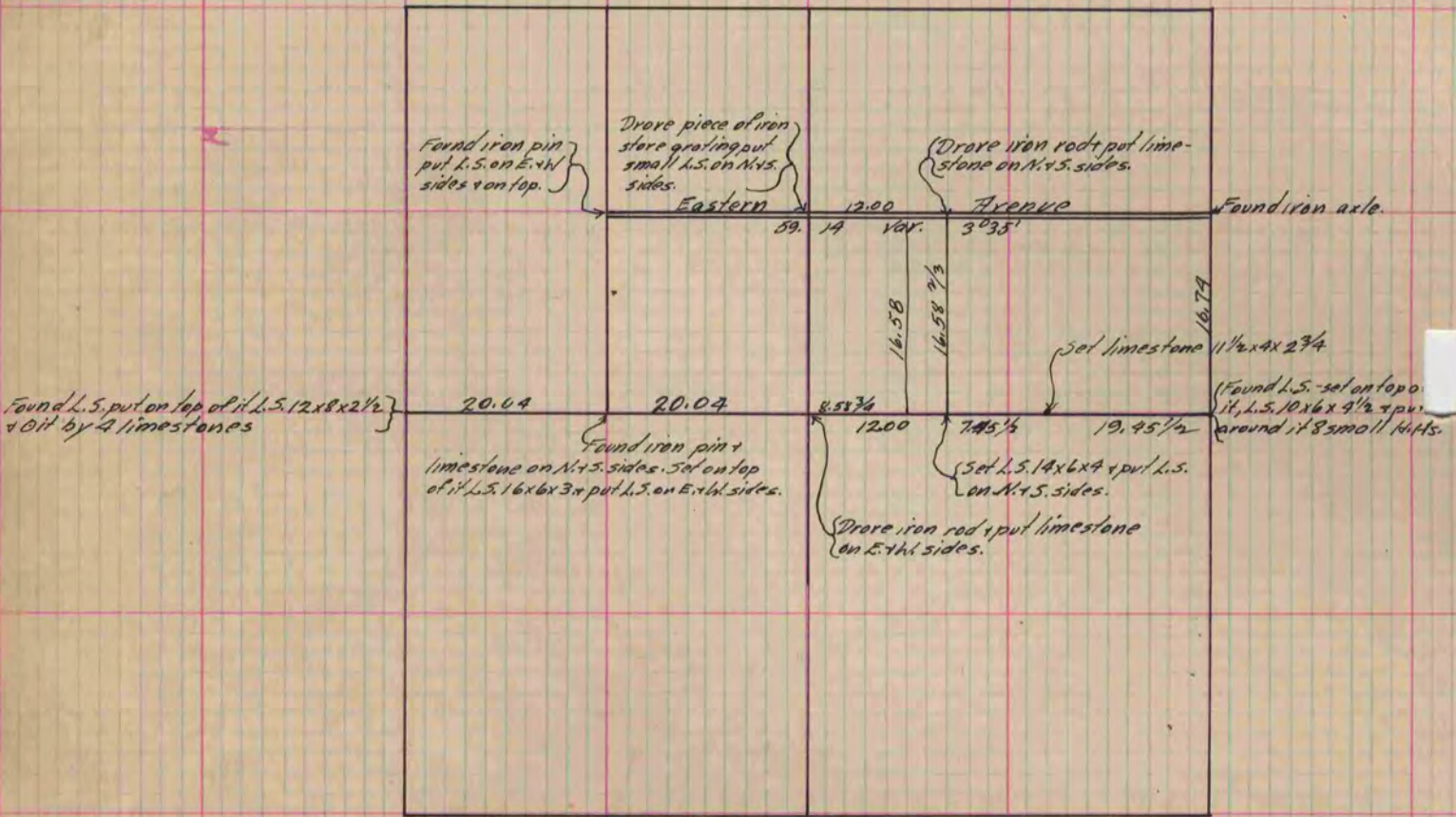
Rock County, Wisconsin, made June the 12 1882

I hereby certify that the following is a correct record of said survey as made by me.

COUNTY BUILDING  
CITY OF JANESVILLE

(Signed) Edward Ruger  
R.H.B.

County Surveyor.



(See P. 27)

Copied from P. 326 Vol. 2 County Surveyor's Record.