

# PLAT AND RECORD

**MICROFILMED**

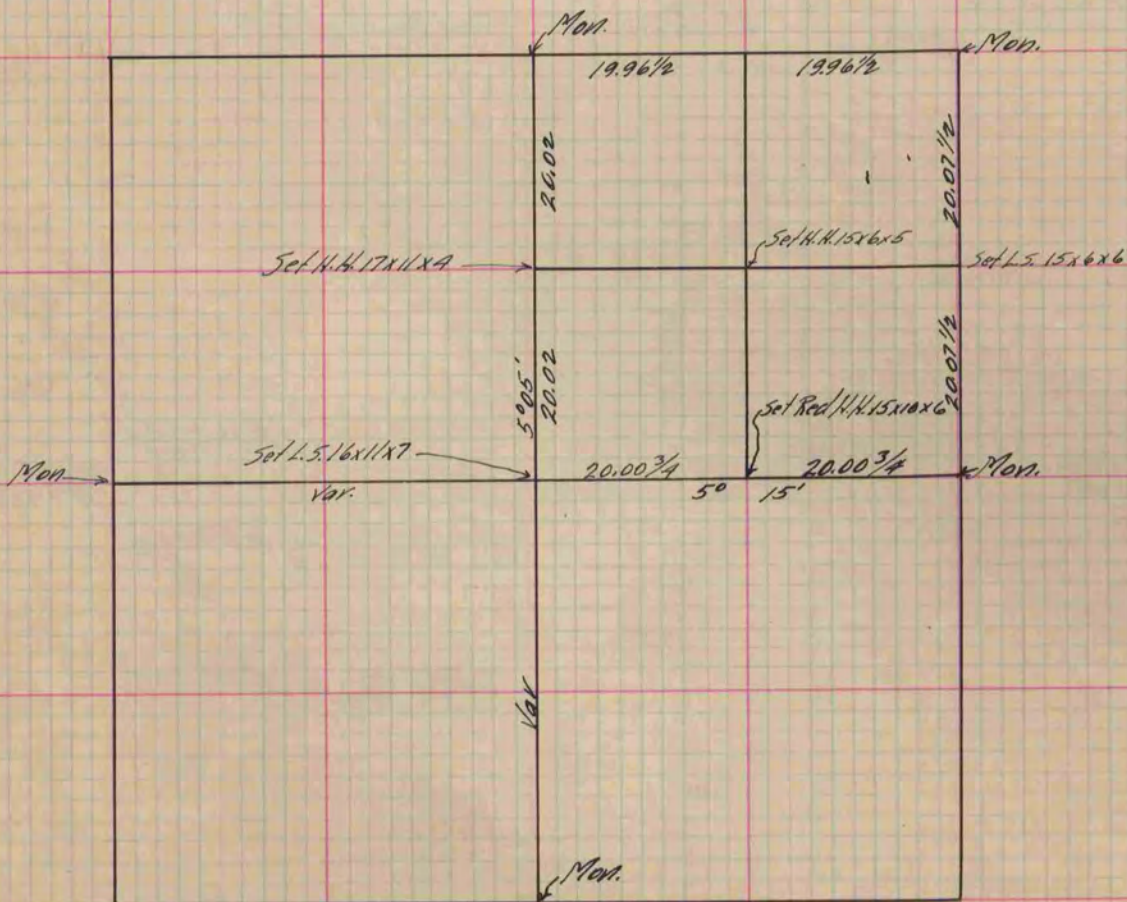
Of a Survey on Section 31 T 4 R 10 E. of the 4 P. M. in Union Township

Rock County, Wisconsin, made October the 24 + 25 1890

I hereby certify that the following is a correct record of said survey as made by me.

COUNTY BUILDING  
CITY OF JANESVILLE

(Signed) O. G. Bleedorn Dep.  
R.H.B. County Surveyor.



*Copied from P. 352 Vol. 2 County Surveyor's Record.*