

MICROFILMED

PLAT AND RECORD

Of a Survey on Section 14 T 2 R 12 E. of the 4 P. M. in Rock Township

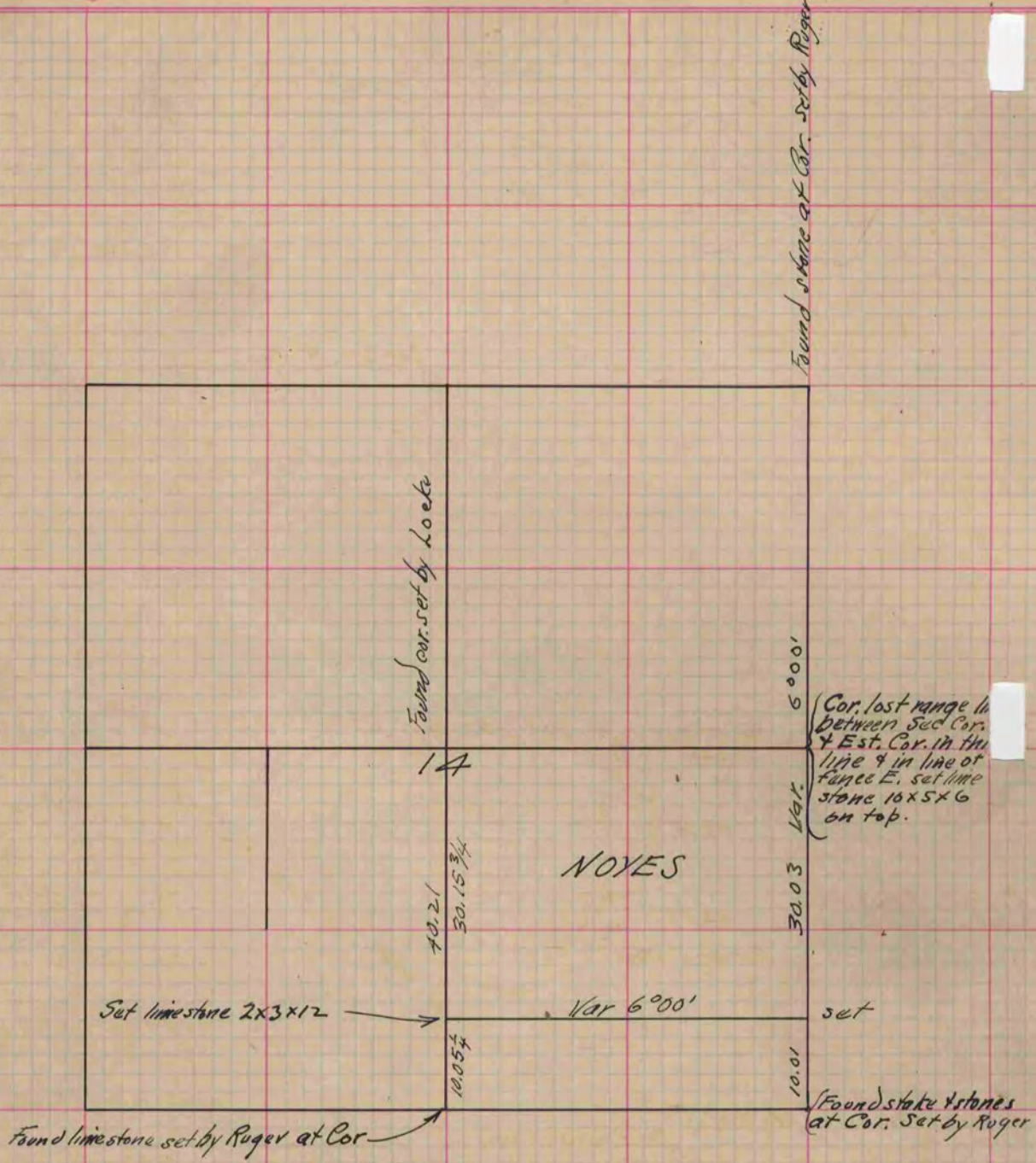
Rock County, Wisconsin, made October the 15th 1880

I hereby certify that the following is a correct record of said survey as made by me.

COUNTY BUILDING
CITY OF JANESVILLE

(Signed) R. K. Lee
R. H. B.

Deputy
County Surveyor.



Copied from Page 261 Vol. 2. County Surveyors Record.