

MICROFILMED

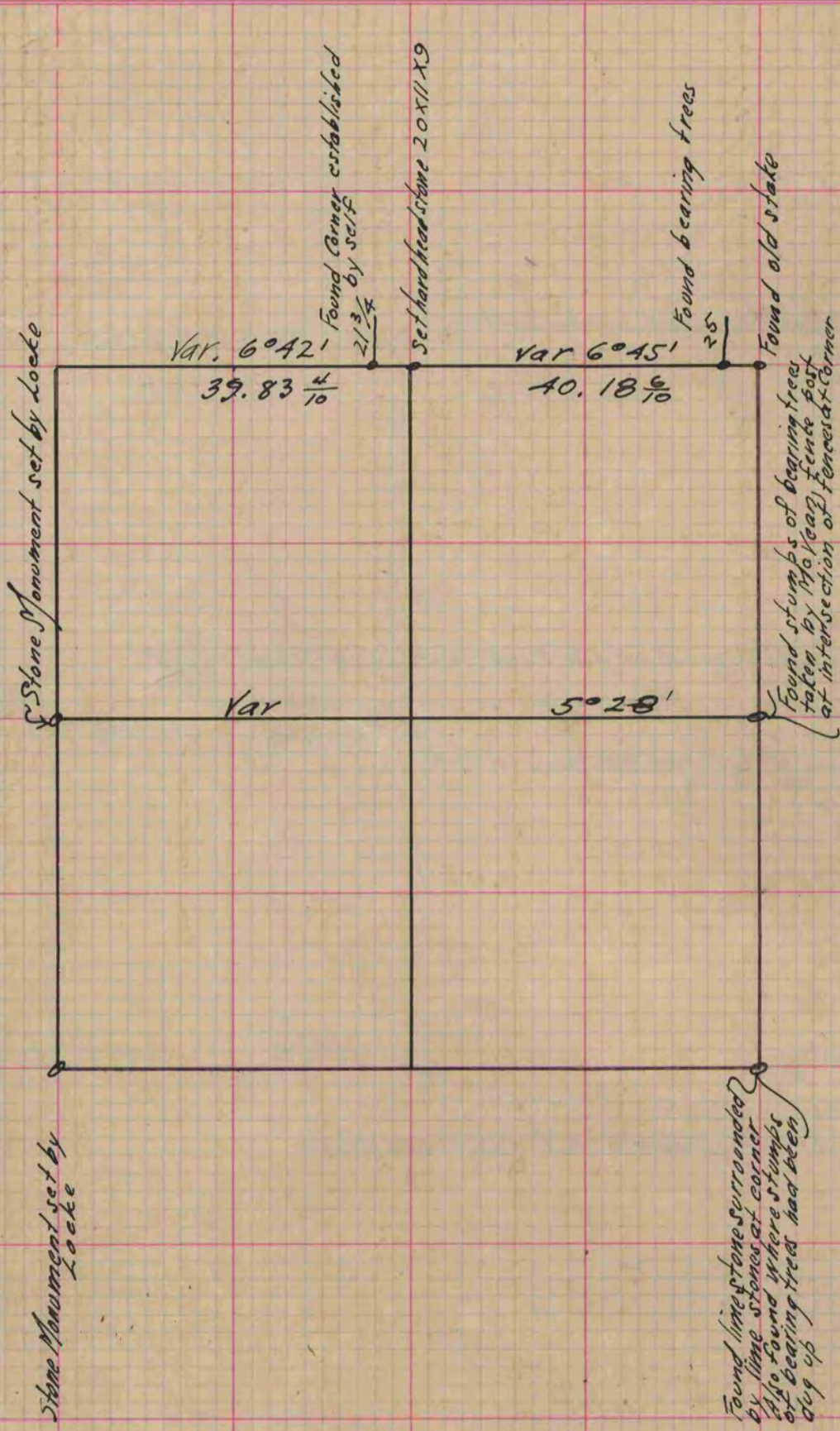
# PLAT AND RECORD

Of a Survey on Section 6 T 2 R 12 E. of the 4 P. M. in Rock Township  
Rock County, Wisconsin, made November the 9+10<sup>th</sup> 1870

I hereby certify that the following is a correct record of said survey as made by me.

COUNTY BUILDING  
CITY OF JANESVILLE

(Signed) Edward Ruger { Dept. R. & B.  
County Surveyor.



Copied from page 29 Vol. 2. Original County Surveyors Record