

302 VOL. 5 PLAT AND RECORD

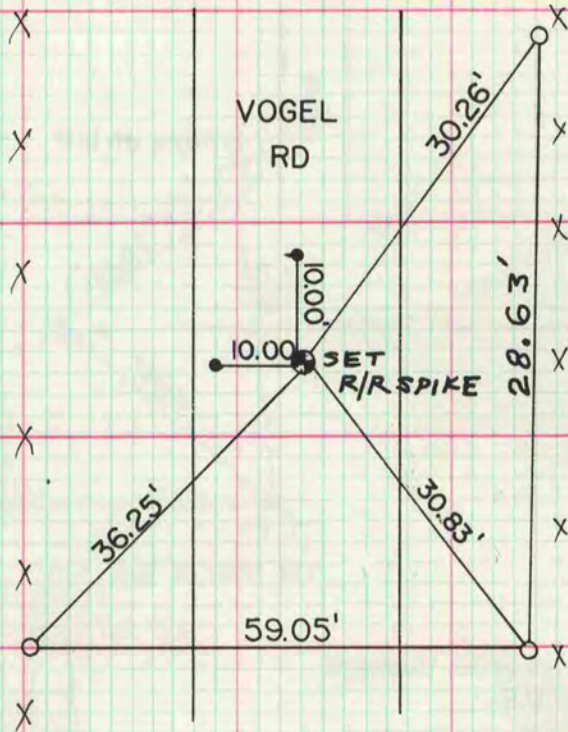
Of a Survey on Section 10 T 4 N R 13 E. of the 4 P. M. in MILTON Township
Rock County, Wisconsin, made JUNE the 14

I hereby certify that the following is a correct record of said survey as made by me.



COUNTY BUILDING
CITY OF JANESVILLE

N 1/4 cor sec 10-4-13
fd pk
for road resurfacing project



● = R/R spike
○ = 1" I.P.

all field measurements
agreed with record distances

MICROFILMED