

# PLAT AND RECORD

231  
V-5

COUNTY BUILDING DEPARTMENT  
CITY OF JANESVILLE

Of a Survey on Section 36 T 1 N R 14 E. of the 4 P. M. in CLINTON Township

Rock County, Wisconsin, made DEC the 1 1976

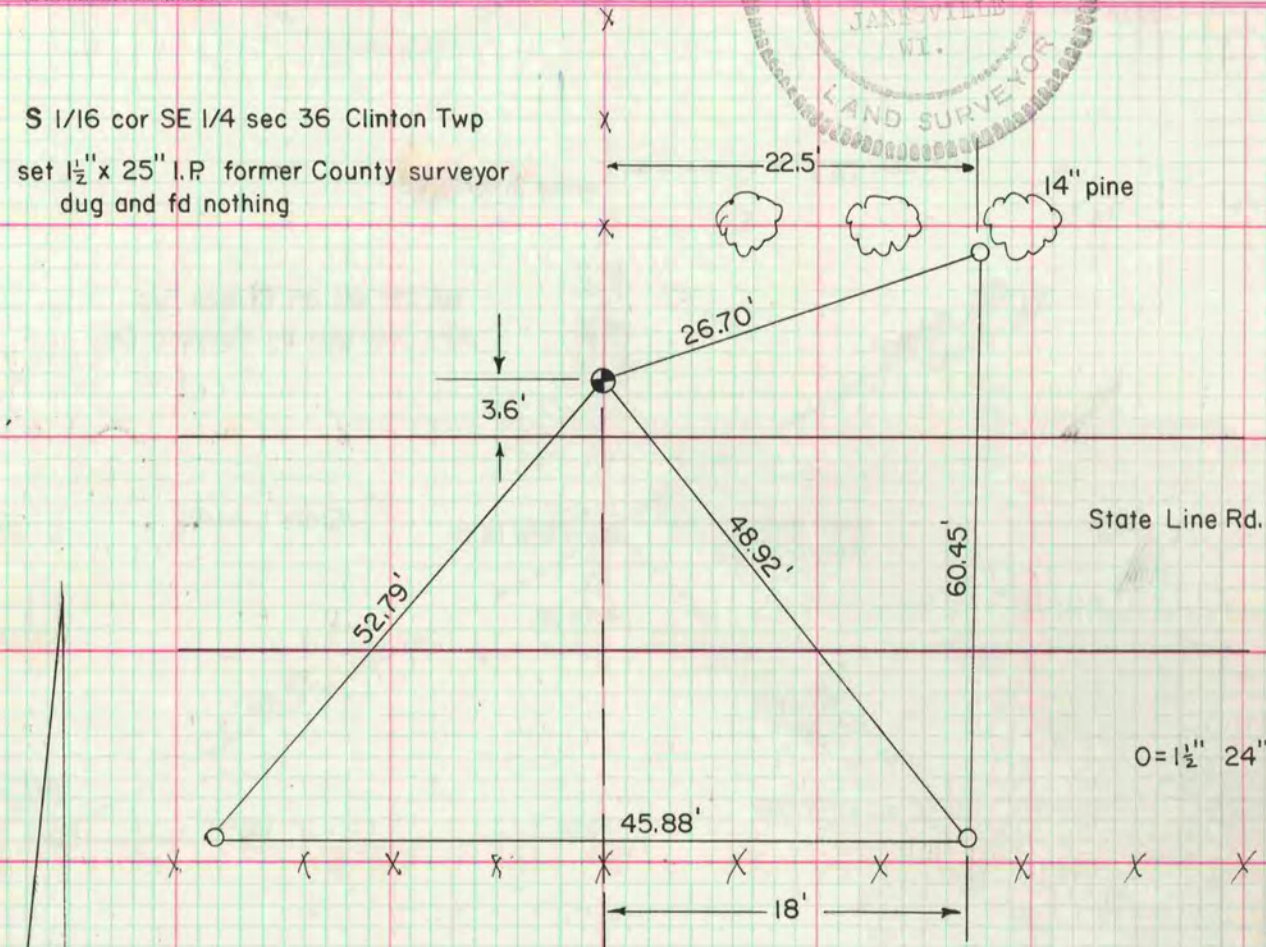
I hereby certify that the following is a correct record of said survey as made by me.

**MICROFILMED**



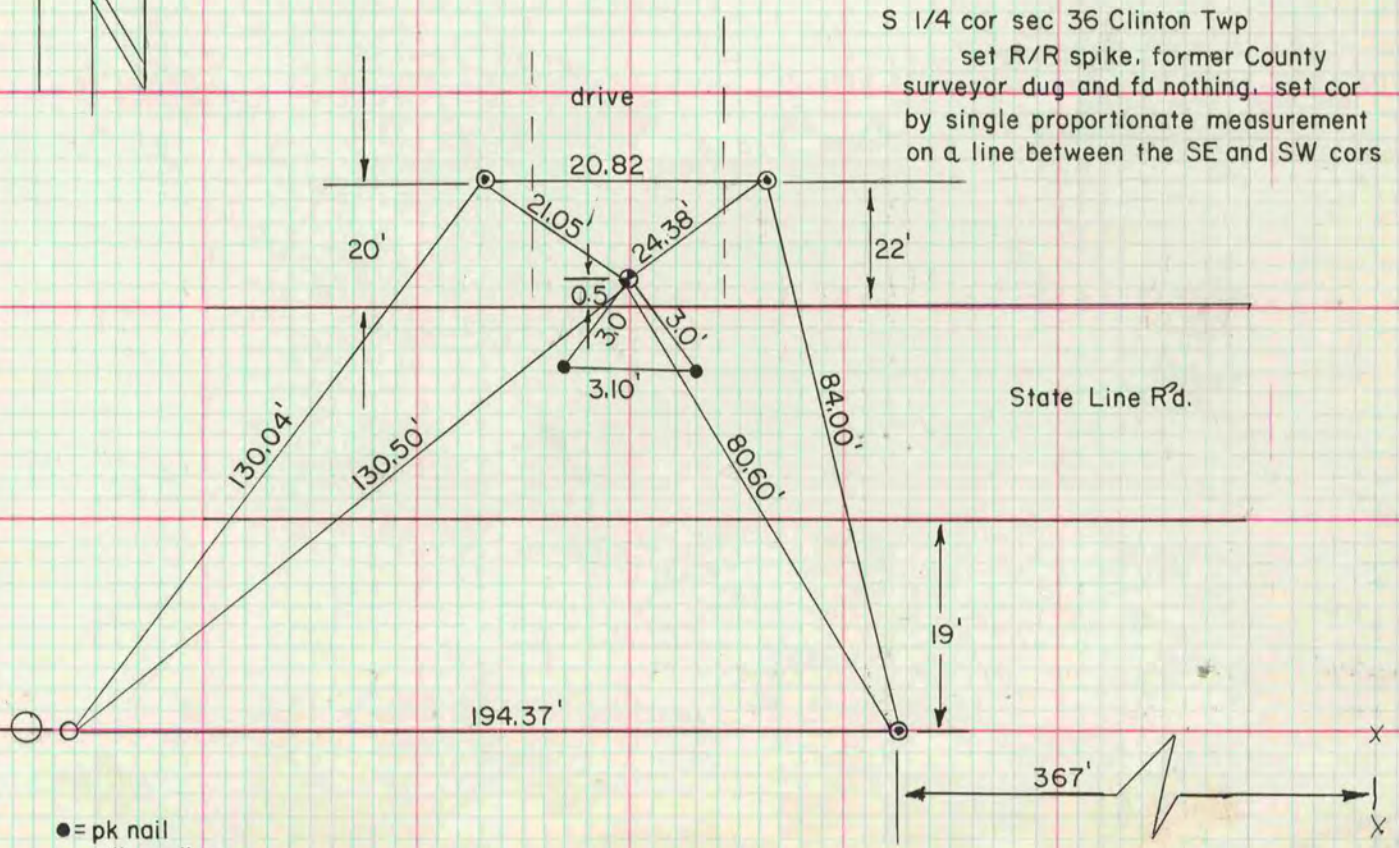
County Surveyor.

S 1/16 cor SE 1/4 sec 36 Clinton Twp  
set 1 1/2" x 25" I.P former County surveyor  
dug and fd nothing



O = 1 1/2" 24" I.P.

S 1/4 cor sec 36 Clinton Twp  
set R/R spike, former County  
surveyor dug and fd nothing. set cor  
by single proportionate measurement  
on a line between the SE and SW cors



- = pk nail
- ⊙ = 1 1/2" 24" I.P with cap
- = 1 1/2" 24" I.P