

MICROFILMED

PLAT AND RECORD

515

V-2

COUNTY BUILDING
CITY OF JANESVILLE

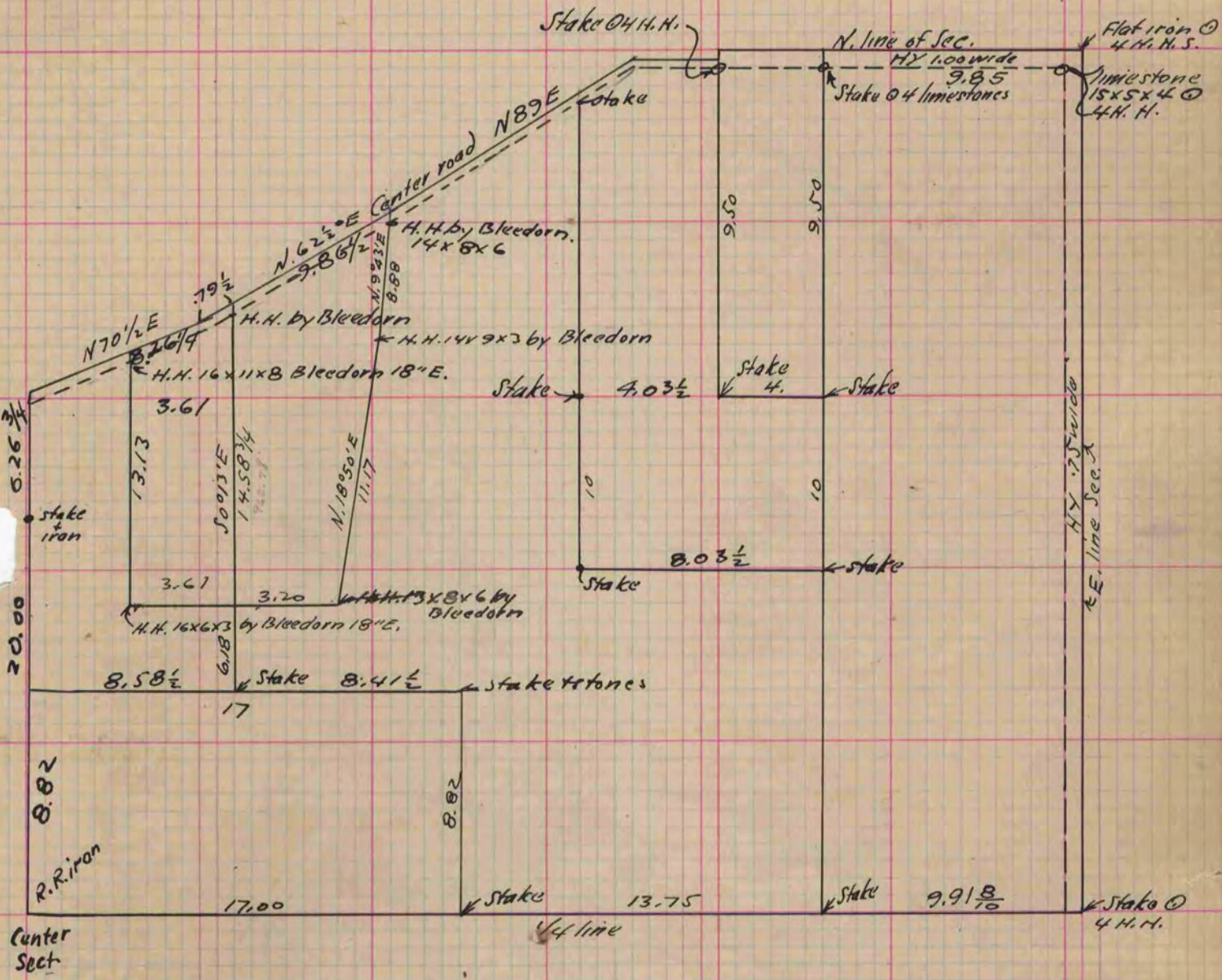
Of a Survey on Section ^{N.E. 1/4} 10 T. 4 R. 12 E. of the 4 P. M. in Fulton Township

Rock County, Wisconsin, made June the 27 1900

I hereby certify that the following is a correct record of said survey as made by me.

(Signed) Perry F. Brown
R. H. B.

County Surveyor.



Copied from P. 389 Vol. 2. County Surveyors Record.