

# PLAT AND RECORD

V-2  
**MICROFILMED**

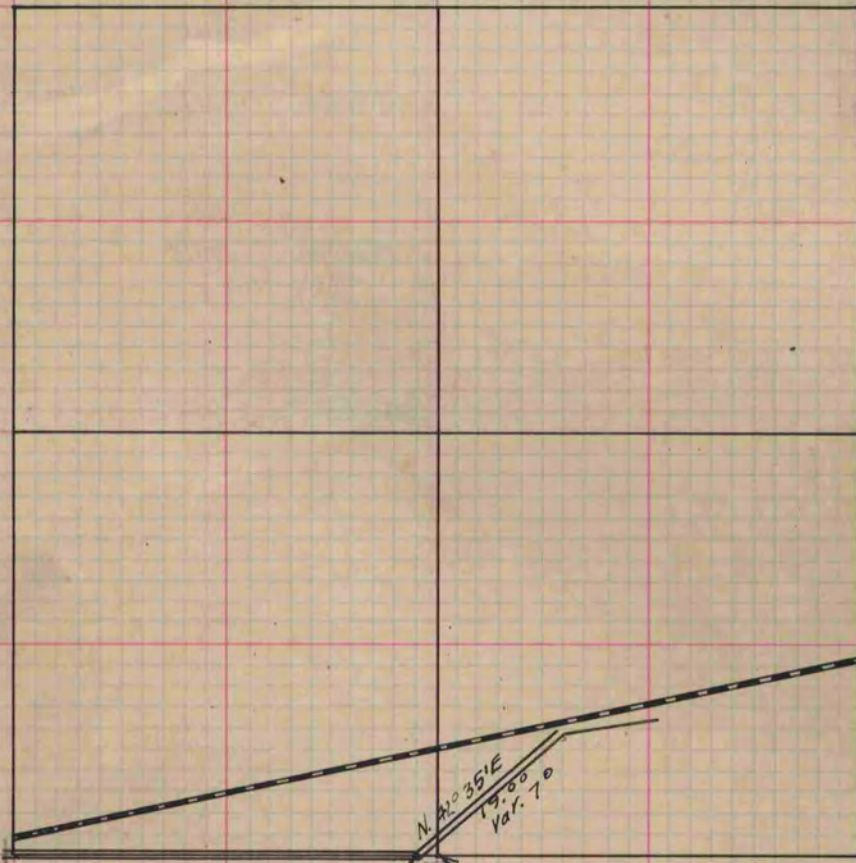
Of a Survey on Section 15 T 2 R 10 E. of the 4 P. M. in Spring Valley Township  
Rock County, Wisconsin, made November the 21 1874

I hereby certify that the following is a correct record of said survey as made by me.

COUNTY BUILDING  
CITY OF JANESVILLE

(Signed) Edward Ruger  
R.H.B. County Surveyor.

*the portion of the Highway re-surveyed - Commences at a point 1.50 chains West of the South-quarter Cor. of Sec. 15, thence N. 42° 35' E. 19 chains The railroad cuts off a portion of the highway.*



*At point of angulation in highway 1.50 chs. W. of S. 1/4 Cor. drove stake & @ it with 4 lime stones*

*Found Cor. Est. by Locke - Stake @ by 3 lime stones distance to S.W. B.T. stump 135 instead of 145 - Course to N.W. B.T. stump S. 78° W. instead of S. 73° W N.W. B.T. Stump dug up. Found where it had been*

*Copies from page 132 Vol. 2. Original County Surveyors Record*