

MICROFILMED PLAT AND RECORD

Of a Survey on Section 15 T 4 R 12 E. of the 4 P. M. in Fulton Township

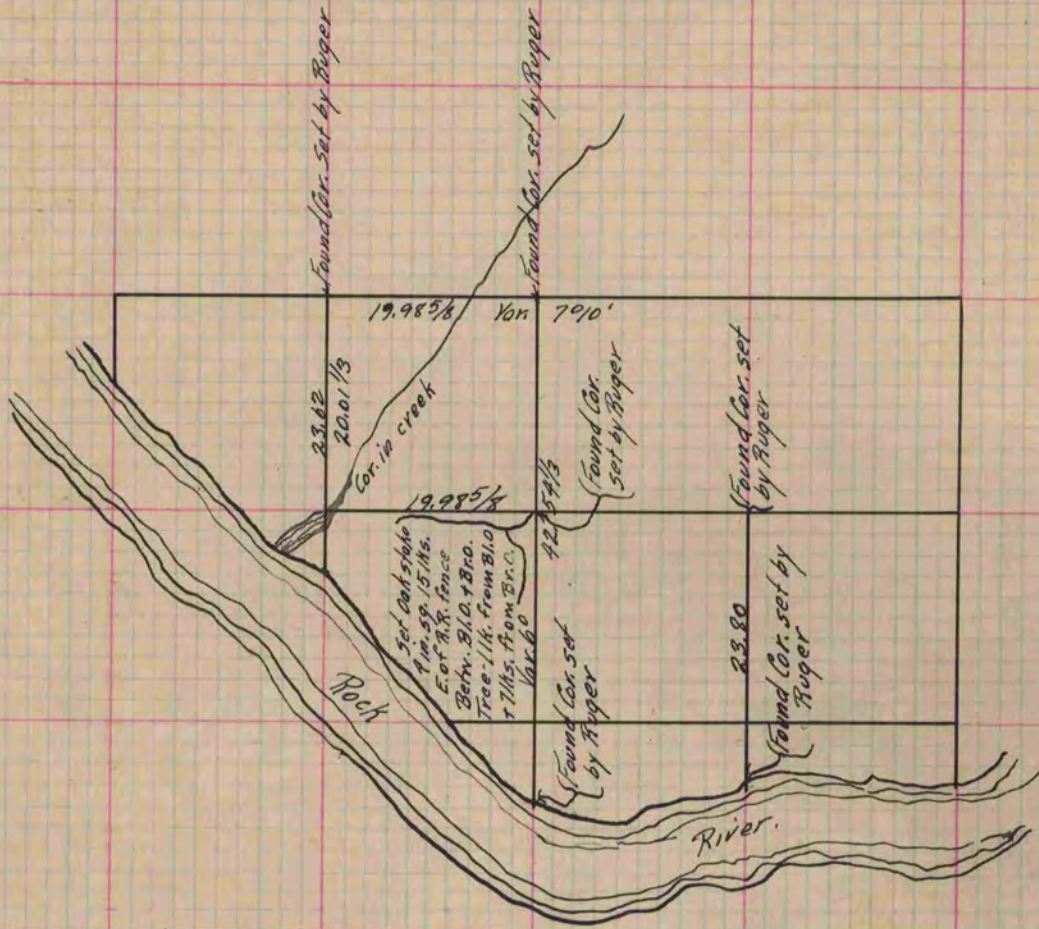
Rock County, Wisconsin, made October the 7th & 8th 1872

I hereby certify that the following is a correct record of said survey as made by me.

COUNTY BUILDING
CITY OF JANESVILLE

(Signed) R. K. Lee
R. H. B.

{Deputy
County Surveyor.



Copied from Page 53 Vol. 2. Original County Surveyors Record.