

474
V-2

MICROFILMED

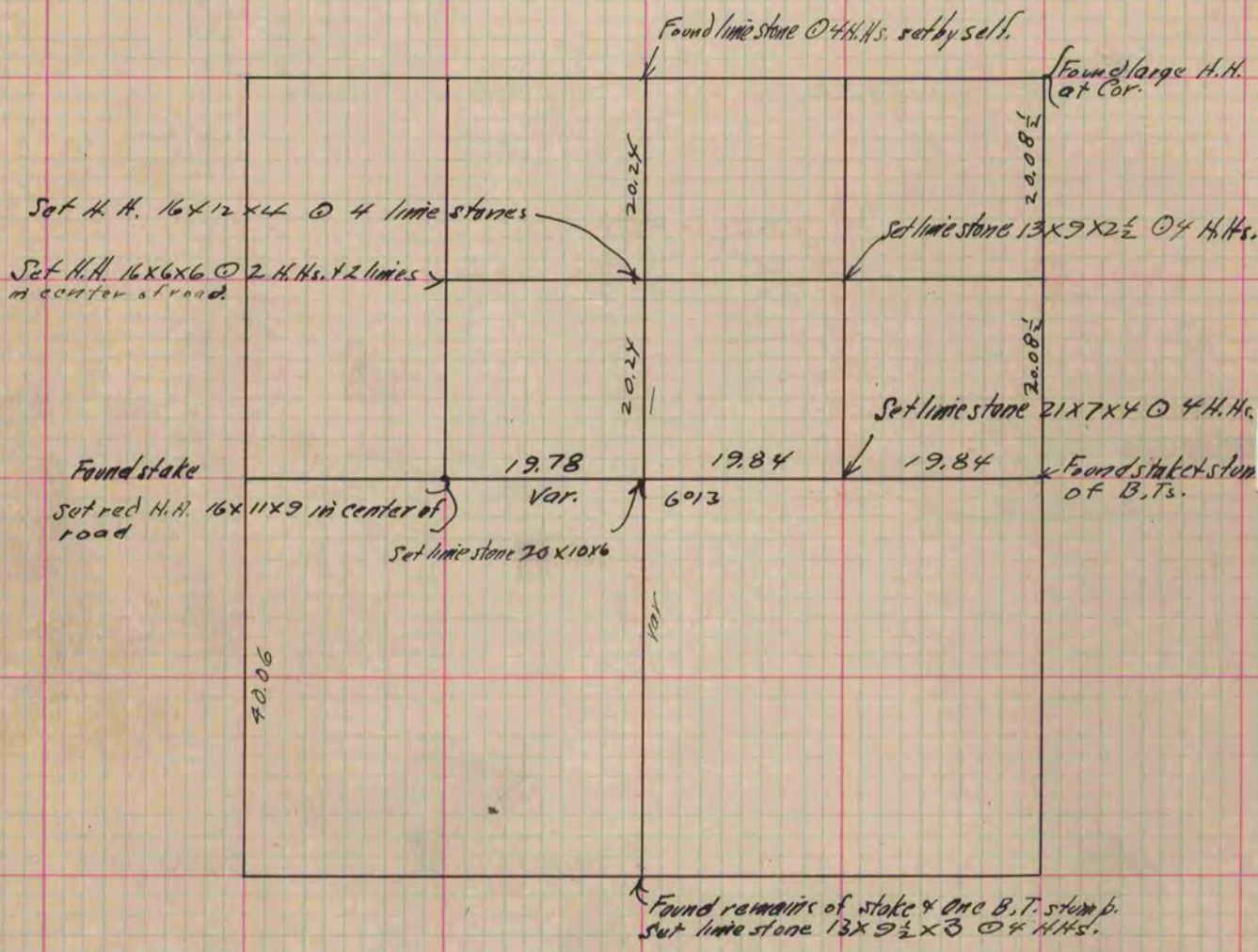
PLAT AND RECORD

Of a Survey on Section 21 T A R 12 E. of the 4 P. M. in Fulton Township

Rock County, Wisconsin, made May the 12 1893

COUNTY BUILDING CITY OF JANESVILLE hereby certify that the following is a correct record of said survey as made by me.

(Signed) O. G. Bleedorn
R. H. B. County Surveyor.



Copied from P. 371 Vol. 2. County Surveyors Record.