

U.S. PUBLIC LAND SURVEY MONUMENT RECORD

For Public Land Survey Corners in:

WI ADMINISTRATIVE CODE A-E 7.08 REQUIREMENT

T. 5 N., R. 14 E

CORNER CODE INDEX

A	1	2	3	4	5	6	7	8	9	10	11	12	13	14	15	16	17	18	19	20	21	22	23	24	25
B																									
C																									
D																									
E																									
F																									
G																									
H																									
J																									
K																									
L																									
M																									
N																									
O																									
P																									
Q																									
R																									
S																									
T																									
U																									
V																									
W																									
X																									
Y																									
Z																									

KOSHKONONG TWP

ROCK COUNTY WI

IF AVAILABLE
ROCK COUNTY COORDINATES PREFERRED

North _____ Elev. _____

East _____

Hor. Datum _____ Vert. Datum _____

LATITUDE _____ ELLIPS. HT. _____

LONGITUDE _____

GPS (X) _____ TRAVERSE (X) _____

BASED ON THE FOLLOWING CONTROL:

PLACE MONUMENT SYMBOL **◆** AT PROPER LOCATION ON ABOVE INDEX

◆ CORNER MONUMENT **○** WITNESS MONUMENT

(a)

THOMAS WOLLIN, JEFFERSON COUNTY SURVEYOR,
PROVIDED THE STATE PLANE COORDINATES FOR
CORNER CODE # 5701 COR SE SEC 34 T 5 N R 14 E

STATE PLANE COORDINATES N/S 309,735,309
NAD 1983/91 OF RECORD E/W 2,285,907.593

I DONALD BARNES CONVERTED THE ABOVE
COORDINATES TO THE FOLLOWING:

LATITUDE 42-50-37.10618
LONGITUDE 88-48-59.26019
MERIDIAN CONV. 0-48-47.6
SCALE FACTOR 0.9999795874

ROCK COUNTY COORDINATES (NAD 1983/91)

N/S 327,816.498
E/W 2,548,597.36
SCALE 1.0000013755

CONVERGENCE: THE ANGULAR DIFFERENCE
BETWEEN THE GEODETIC NORTH & THE ROCK
COUNTY MERCATOR NORTH

⊕ DEG 0 MIN 10 SEC 26.1

BEARINGS ARE BASED ON:

Donald Barnes
2/12/03

FIELD BOOK _____ PAGE # _____

SHEET 1 OF 1

SHOW A PLAN VIEW DRAWING DEPICTING THE CORNER MONUMENT AND SURROUNDING
PHYSICAL FEATURES, INCLUDING THE EXCAVATION AREA AND DEPTH.

PLANNING & ZONING COMMITTEE ADOPTED THE ABOVE FORM ON 12/2/1982

File in LIMA TWP

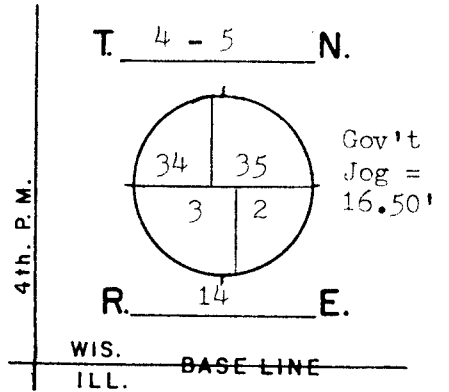
CORNER CODE 2A17/18

GOVERNMENT LAND CORNER RECORD

JEFFERSON COUNTY

CORNER NO. 5701

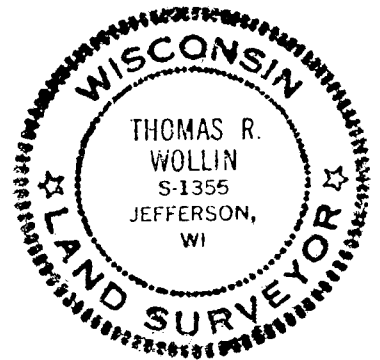
TYPE OF MONUMENT Aluminum Magnetized
 STATE PLANE COORDINATES N. 309735.309
NAD 1983/91 E. 2285907.593 SE-34
 ELEVATION M.S.L. DATUM: _____
 Grid-Ground 1.0000569847
 FIELD BOOK Koshkonong p. 49
 DRAWN BY TRW



BASIS FOR MONUMENTATION

Original Survey, 1834-37, Wood Post & Bearing Trees.
 3/1870, Rock Co. Corner set by Edward Ruger, Surveyor.
 A stone monument was set. Ref. Rock Co. Surveyor.
 1886, Resurvey of Koshkonong Township, limestone Mon-
 uments were set. Notes recorded in the Register of
 Deeds, Misc. Vol. 1, pages 389-412.
 5/20/1983, The Resurvey stone for Koshkonong was found
 on Northside of Road bank about 3' below ground, the
 stone to Rock County was not found. An Aluminum mon-
 ument was set for the Jefferson County Corner on top
 of the Resurvey stone. A Cast iron monument was
 established at jog distance and on Town line for the
 Rock County Corner. Ref. Rock County Surveyor.
 3/13/2002, G.P.S. coordinates are assigned. A Topcon
 GP-SX1 single-frequency receiver was used.

SEAL:



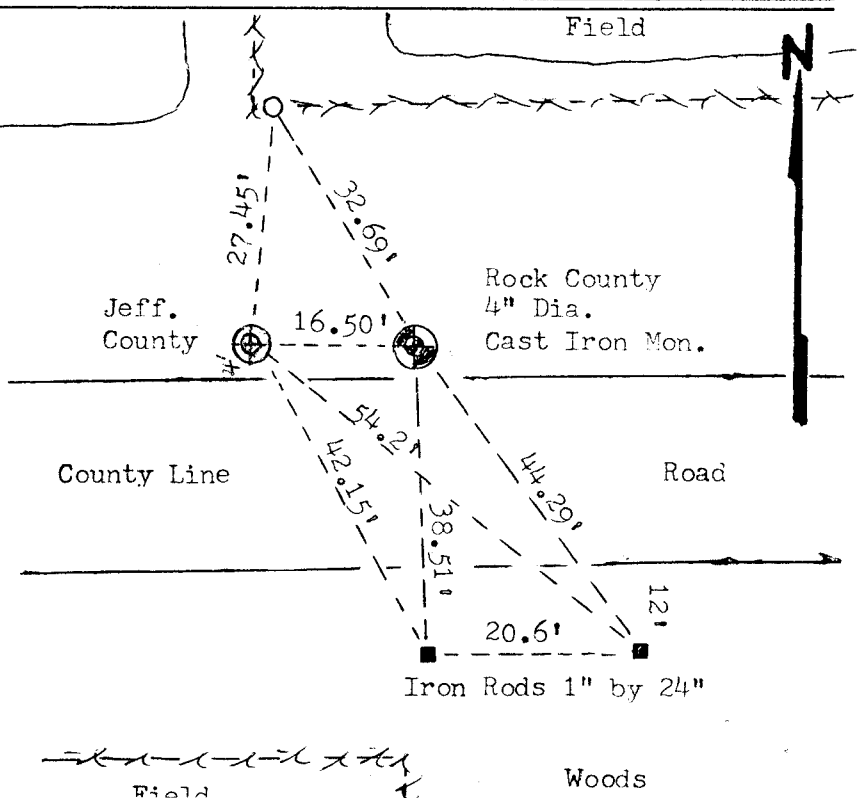
DATA SHOWN HERE ON
 CERTIFIED CORRECT:

Thomas R. Wollin
 REGISTERED LAND SURVEYOR

DATED 3/18/2002

LOCATION SKETCH

- SQUARE CUT LIMESTONE
- CONCRETE / BRASS CAP
- ALUMINUM MAGNETIZED 2" by 30"
- IRON PIPE 1" by 24"
- STEEL "T" BAR STAKE
- PK NAIL
- FENCE
- UTILITY POLE
- STEEL POST / SIGN



MAINTENANCE RECORD		
DATE	INIT.	REMARKS

File in LIMATWP
 AB-17/18