

# U.S. PUBLIC LAND SURVEY MONUMENT RECORD

For Public Land Survey Corners in:

WI ADMINISTRATIVE CODE A-E 7.08 REQUIREMENT

T. 5 N., R. 14 E

### CORNER CODE INDEX

A	1	2	3	4	5	6	7	8	9	10	11	12	13	14	15	16	17	18	19	20	21	22	23	24	25
B																									
C	6																								
D																									
E																									
F																									
G	7																								
H																									
J																									
K																									
L	18																								
M																									
N																									
O																									
P	19																								
Q																									
R																									
S	30																								
T																									
U																									
V																									
W																									
X	31																								
Y																									
Z																									

KOSHKONONG TWP

**ROCK COUNTY WI**

IF AVAILABLE  
ROCK COUNTY COORDINATES PREFERRED

North \_\_\_\_\_ Elev. \_\_\_\_\_

East \_\_\_\_\_

Hor. Datum \_\_\_\_\_ Vert. Datum \_\_\_\_\_

LATITUDE \_\_\_\_\_ ELLIPS. HT. \_\_\_\_\_

LONGITUDE \_\_\_\_\_

GPS (X) \_\_\_\_\_ TRAVERSE (X) \_\_\_\_\_

BASED ON THE FOLLOWING CONTROL:

PLACE MONUMENT SYMBOL  $\blacklozenge$  AT PROPER LOCATION ON ABOVE INDEX

$\blacklozenge$  CORNER MONUMENT       $\circ$  WITNESS MONUMENT

(a)

THOMAS WOLLIN, JEFFERSON COUNTY SURVEYOR,  
PROVIDED THE STATE PLANE COORDINATES FOR  
CORNER CODE #5901 COR S<sup>1</sup>/<sub>4</sub> SEC 34 T 5 N R 14 E

STATE PLANE COORDINATES N/S 309,776.054  
NAD 1983/91 OF RECORD E/W 2,283,252.174

I DONALD BARNES CONVERTED THE ABOVE  
COORDINATES TO THE FOLLOWING:

LATITUDE 42-50-37.87932  
LONGITUDE 88-49-34.89294  
MERIDIAN CONV. 0-48-23.1  
SCALE FACTOR 0.9999795513

ROCK COUNTY COORDINATES (NAD 1983/91)

N/S 327,886,872  
E/W 545,942,403  
SCALE 1,000,000 9675

CONVERGENCE: THE ANGULAR DIFFERENCE  
BETWEEN THE GEODETIC NORTH & THE ROCK  
COUNTY MERCATOR NORTH

$\oplus$  1- DEG 0 MIN 10 SEC 01.9

BEARINGS ARE BASED ON:

*Donald Barnes*

2/12/03

SHEET 1 OF 1

FIELD BOOK \_\_\_\_\_ PAGE # \_\_\_\_\_

SHOW A PLAN VIEW DRAWING DEPICTING THE CORNER MONUMENT AND SURROUNDING PHYSICAL FEATURES, INCLUDING THE EXCAVATION AREA AND DEPTH.

PLANNING & ZONING COMMITTEE ADOPTED THE ABOVE FORM ON 12/2/1982

*File in Lima*

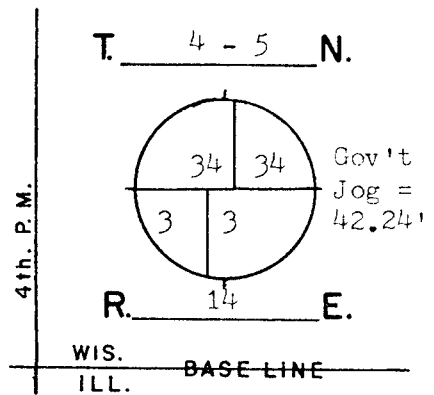
**CORNER CODE** A-15/16

# GOVERNMENT LAND CORNER RECORD\*

## JEFFERSON COUNTY

CORNER NO. 5901

TYPE OF MONUMENT Aluminum Monument & Stone  
 STATE PLANE COORDINATES N. 309776.054  
E. 2283252.174 S<sub>4</sub><sup>1</sup>-34  
 NAD 1983/91  
 ELEVATION M.S.L. DATUM:  
 Grid-Ground 1.0000567658  
 FIELD BOOK Koshkonong p. 48  
 DRAWN BY TRW



### BASIS FOR MONUMENTATION

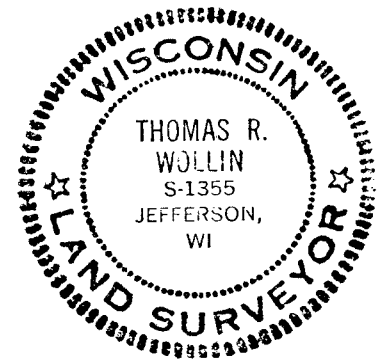
Original Survey, 1834-37, Wood Post & Bearing Trees  
Resurvey of Koshkonong Township, by Milo C. Jones,  
August-December, 1886. Field notes say that Bearing  
Tree evidence was found. From this evidence a  
Limestone monument, Approx. 6" by 36" long with a  
squared finished top, was set for the corner. Notes  
recorded in Register of Deeds, Miscellaneous Volume 1  
pages 389-412.

1972, Dug and found the stone monument with the top  
1' of the stone broken off & missing. The stone is  
about 15" below the road surface. Position of the  
stone was referenced with iron pipes. In 1974 an  
iron pipe was set over the stone.

1980, Set an Aluminum Monument over the stone for  
the corner, replacing the iron pipe. Part of the  
Aluminum Monument is a 1" by 12" long spike which is  
drilled into the stone.

2/8/2002, G.P.S. coordinates are assigned. A Topcon  
GP-SX1 single-frequency receiver was used.

SEAL:

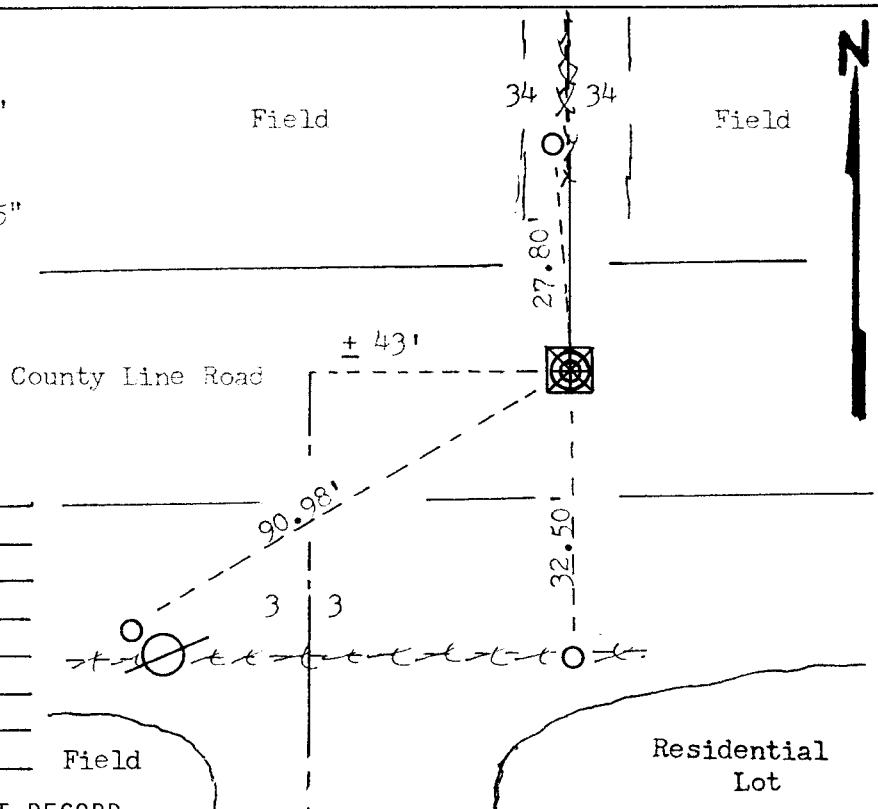


DATA SHOWN HERE ON  
 CERTIFIED CORRECT:

*Thomas R. Wollin*  
 REGISTERED LAND SURVEYOR  
 DATED 5/2/1982

### LOCATION SKETCH

- SQUARE CUT LIMESTONE 6" by 26"
- CONCRETE / BRASS CAP
- ALUMINUM MAGNETIZED 4" by 25"
- IRON PIPE 1" by 24"
- RR SPIKE
- PK NAIL
- \*\*\* FENCE
- UTILITY POLE
- STEEL POST / SIGN



### MAINTENANCE RECORD

DATE	INIT.	REMARKS

\* U.S. PUBLIC LAND SURVEY MONUMENT RECORD

A-15/16